

Statement of Community Involvement Fact Sheet and Next Steps

This fact sheet is a quick reference guide to the purpose of the Statement of Community Involvement, the work done on it so far, the current consultation phase and the next stages in the process towards adopting the document.

The Role and Status of the Statement of Community Involvement

The Statement of Community Involvement shows how the Council intends to involve the community and stakeholders in the preparation and review of planning policy documents. The Statement of Community Involvement explains:

- The types of documents we shall be consulting on;
- At what stages consultation will take place;
- Whom we shall involve;
- The consultation techniques we shall use that are most appropriate for the particular subject and the stage reached.

Also set out within the Statement of Community Involvement are the methods of consultation for planning applications. We are encouraging all applicants to carry out consultation before submitting planning applications:

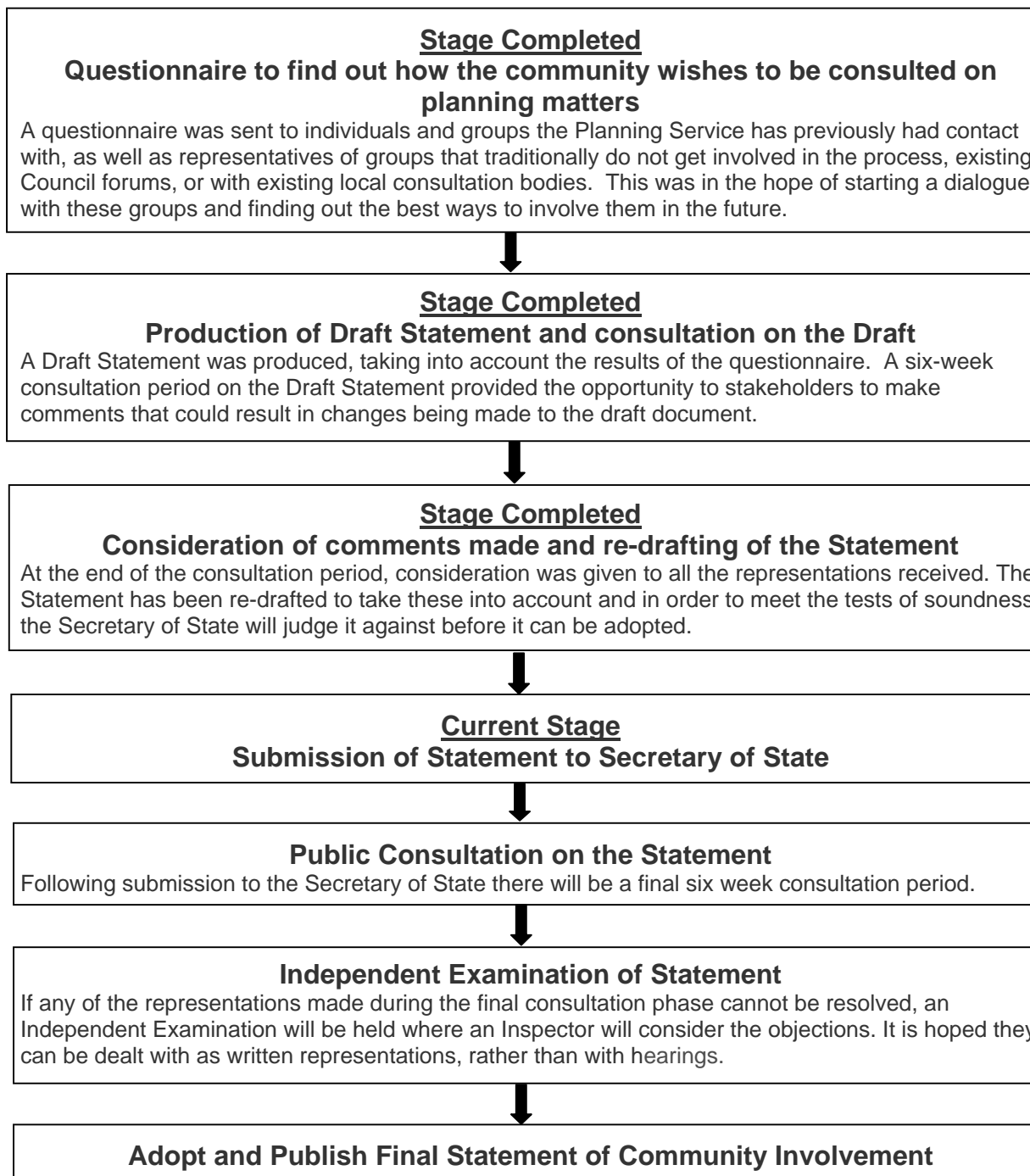
- For example, for minor developments, such as household extensions, applicants are encouraged to consult their neighbours;
- For medium-scale schemes, applicants are asked to contact adjoining occupiers and relevant local amenity and residents' groups;
- Applicants for major schemes are encouraged to consult by arranging meetings with directly affected residents and local interest groups, arranging public meetings, using questionnaire surveys or setting up an exhibition.

These methods were identified as most popular in a questionnaire survey carried out by the Council.

The Statement of Community Involvement shows that, when planning applications are submitted, we shall consult in a way that exceeds the requirements of the statutory regulations. It also sets out the opportunity for involvement when applications are determined.

The Council already has a good track record of involving the community, for example the area planning events used in developing Unitary Development Plan policies. We have also encouraged developers to arrange public exhibitions, leaflets and publicity before major planning applications are submitted. We wish to build on this experience, and the Statement of Community Involvement will help to achieve this.

Where are we now and what will happen next



The Consultation

If you wish to make any comments, use the form provided and return by 5pm on Friday, 11 August 2006 to: Planning Policy Team, Planning Department, 7th Floor, Barnet House, 1255 High Road, Whetstone, London N20 OEJ. Tel: 020 8359 4990, or email: rita.brar@barnet.gov.uk. Please use a different form for each representation. The Council aims to produce a document that will meet the government’s tests of ‘soundness’, so that that the document can be adopted - these tests of soundness are listed on the comment form. It would be most helpful if you could read these and give them consideration when making your comments.