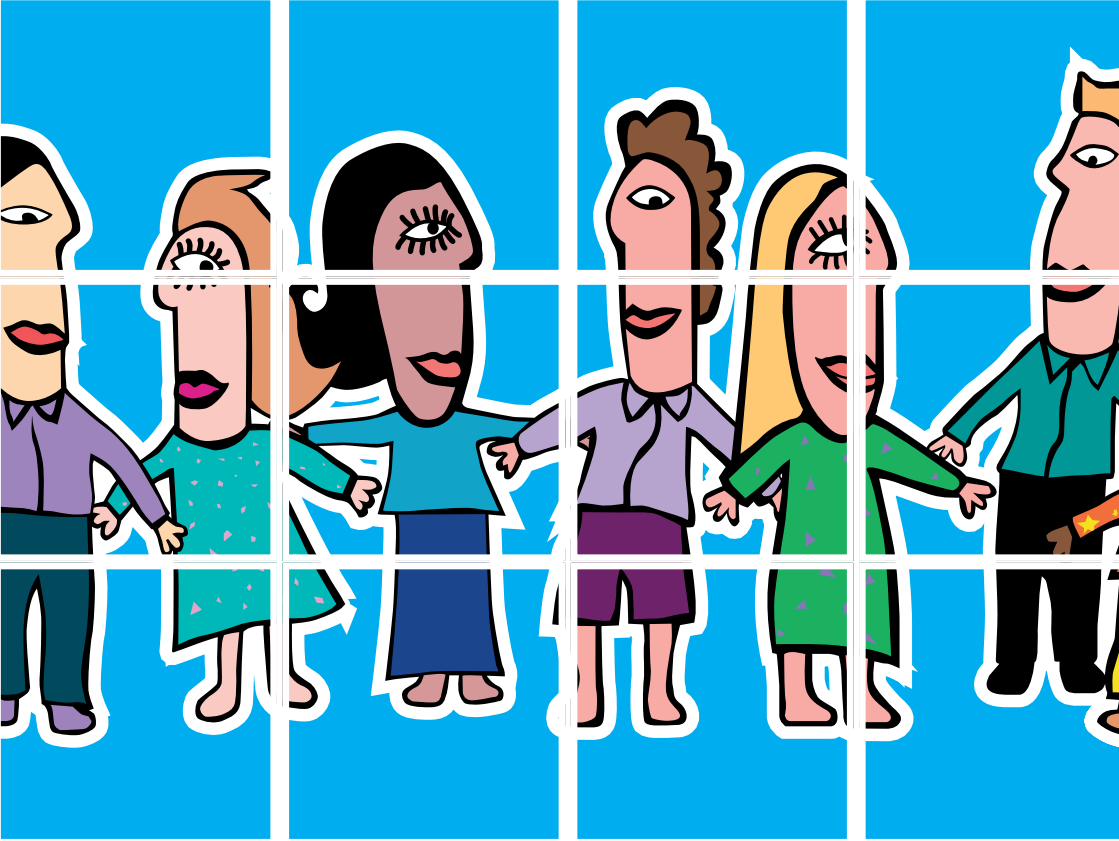


# Parent Partnership Barnet



Supporting parents of children  
with special educational needs

Parent Partnership Barnet offers free, confidential, and impartial

- information
- guidance
- advice
- support

for parents/carers of children with special educational needs.



The service is available to all parents of children

- with a special educational need
- between the ages of 0 and 19 years
- that live in the borough of Barnet.

## Services for you

We can offer:

- the opportunity for you to talk things through and voice your concerns
- support when writing letters to school / Local Authority (LA)
- help with statutory assessment and statementing procedures
- advice on issues around school placement
- support at meetings about your child
- advice on who you should contact if your child has behavioural, emotional or social difficulties
- information on appeals to SEND (Special Educational Needs and Disability Tribunal)
- advice on exclusions
- information about other organisations that might be helpful to you
- information booklets on a range of topics.

## Services for groups

We can provide:

- workshops for parents, (jointly organised with Barnet Mencap)
- drop-ins for parents at schools and children's centres
- advice on starting parent support groups in schools
- an annual conference.

For more information, or to join our mailing list, please contact us.

## We aim to

- help you play a valued and active role in your child's education and enable you to make informed choices and
- encourage joint working between you, your child's school, the local authority and other agencies.

If you need any further advice or support please  
contact Parent Partnership Barnet:

020 8359 7637

020 8359 7694

020 8359 7714

020 8359 7592

020 8359 7272

email: [parent.partnership@barnet.gov.uk](mailto:parent.partnership@barnet.gov.uk)

Parent Partnership Barnet

Building 4

North London Business Park,

Oakleigh Road South London N11 1NP