

**Barnet: A Successful City-Suburb
A Sustainable Community Strategy for Barnet
2008-2018**

**Action Plan
2008/09-10/11**

Incorporates the Local Area Agreement 2008/09-2010/11 for Barnet

Introduction

This action plan supports **Barnet: A Successful City-Suburb. A Sustainable Community Strategy for Barnet, 2008 – 2018**. It has been developed by the Barnet Local Strategic Partnership (LSP) which brings together organisations from the public, private, community and voluntary sector with the key objective of improving the quality of life in Barnet by addressing important issues such as health, housing, community safety, transport and education.

The action plan sets out the planned actions and targets by which the themes and ambitions in the Sustainable Community Strategy will be achieved. Each theme in the strategy has a associated ambitions and a number of key measures of success. Reference is also made to the organisational plans and strategies where these can be found.

The action plan is largely based on **Barnet's Local Area Agreement (LAA)** which runs from 2008/09-2010/11. LAAs are three-year agreements between central government, local authorities and their partners and deliver national outcomes in a way that reflects local priorities. Barnet's LAA was agreed on 30 June 2008. As a number of targets could not be finalised (for example because Central Government had not finalised the method of data collection, it will be regularly reviewed and refreshed. The Action Plan will therefore change to reflect this.

In addition, Barnet's first LAA, adopted in 2007, included a series of targets for which a reward grant will be payable if achieved when the Agreement expires in 2010. These have been included as an Appendix.

Delivering the action plan

Each of the four themes in the Sustainable Community Strategy is led by a thematic partnership. The thematic partnerships are accountable to the LSP and responsible for delivering on the ambitions set out under each theme of the strategy. Further details and contact information can be found in the appendix.

Reviewing performance

The thematic partnerships review their performance against the projects and targets under each theme in the action plan on a quarterly basis. The LSP Executive challenge the overall performance of the action plan, and in particular areas of under-performance, on a six monthly basis using a traffic light assessment.

Last updated 15 July 2008

Reviewing the action plan

The action plan is refreshed on at least an annual basis and a new action plan will be developed every three years to complement the revised Community Strategy. This is the second refresh of the action plan. Many of the targets in the Local Area Agreement will be set during the first year as baseline information becomes known for new targets, and at that point this document will be updated and refreshed.

National Indicator Set

Detailed information on the exact definitions of indicators in the national indicator set and how they are calculated can be found on the Department for Communities and Local Government website at:

<http://www.communities.gov.uk/localgovernment/performanceframeworkpartnerships/nationalindicators/>

Further Information

For further information on the action plan, Sustainable Community Strategy, LAAs or the LSP, please:

Email: communitystrategy@barnet.gov.uk

Telephone: 0208 359 7268

Visit: <http://www.barnet.gov.uk/community-strategy>

Write to:

Kiran Dhillon
Policy & Partnership Group
London Borough of Barnet
North London Business Park
Oakleigh Road South
London N11 1NP.

Delivering Barnet's Sustainable Community Strategy: Key Outcomes

This plan identifies the key measures of success by which the LSP will monitor its success against the Sustainable Community Strategy. It integrates the LAA targets with the Sustainable Community Strategy targets, which were agreed prior to the LAA. Each themed partnership will also be responsible for meeting other targets and milestones, contained within their relevant plans and strategies.

Key: National Indicator Mandatory Local Area Agreement Stretch Local Area Agreement Mandatory

Objective	Key measure of success	Baseline 2007/08	Target 2008/09	Target 2009/10	Target 2010/11	Lead	Link to local plan
Theme: Growing Successfully							
DRIVING SUCCESS National Indicator 5	Overall/General Satisfaction with local area	N/A	TBC	TBC	TBC	Council Executive Group	LB Barnet Corporate Plan
DRIVING SUCCESS Local Indicator	Local target 1- Barnet Financing Plan (Barnet Bond), in conjunction with Growth Area Fund (GAF) 3	N/A	submission of detailed case study to Treasury by 30 June 2008	project plan in place for first major infrastructure project	work starts on site for first major infrastructure project	Council Executive Group	LB Barnet Corporate Plan
Ambition: Delivering Sustainable Housing Growth							
DRIVING SUCCESS National Indicator 154	Net growth in new homes provided	957	859	1774	2366	Council Executive Group	LB Barnet Corporate Plan
DRIVING SUCCESS National Indicator 155	Affordable housing provision	384	508	779	982	Council Executive Group	LB Barnet Corporate Plan
Ambition: Keep Barnet Moving							

Objective	Key measure of success	Baseline 2007/08	Target 2008/09	Target 2009/10	Target 2010/11	Lead	Link to local plan
DRIVING SUCCESS National Indicator 167¹	Congestion – average journey time per mile during the morning peak	N/A	TBC	TBC	TBC	Council Executive Group	LB Barnet Corporate Plan
DRIVING SUCCESS National Indicator 178²	Bus services running on time	<u>N/A</u>	TBC	TBC	TBC	Council Executive Group	LB Barnet Corporate Plan
Ambition: People are equipped with the right skills to take advantage of employment opportunities							
DRIVING SUCCESS National Indicator 164	Working age population educated to level 3 or higher	54.4% (2006)	59.1%	60.0%	60.9%	Council Executive Group	Skills Development Plan
DRIVING SUCCESS National Indicator 165	Working age population educated to level 4 or higher	39.3% (2006)	40%	41%	43.5%	Council Executive Group	Skills Development Plan
TACKLING DISADVANTAGE National Indicator 153	Working age people claiming out of work benefits in the worst performing neighbourhoods	26.3%	25.8%	25.2%	24.7%	Council Executive Group	Skills Development Plan
TACKLING DISADVANTAGE National Indicator 161	Learners achieving Level 1 qualification in Literacy	386	390	403	419	Council Executive Group	Skills Development Plan
TACKLING	Learners achieving	144	145	148	151	Council	Skills

¹ Barnet proposed this as a Local Area Agreement target, but it was not included as Transport for London were unable to supply individual Borough data. It remains a key part of Barnet's 'story' of driving success, and will be reviewed depending on the availability of Borough level data.

² ditto

Objective	Key measure of success	Baseline 2007/08	Target 2008/09	Target 2009/10	Target 2010/11	Lead	Link to local plan
DISADVANTAGE National Indicator 162	an Entry Level 3 qualification in numeracy					Executive Group	Development Plan
Ambition: Environmentally Sensitive							
DRIVING SUCCESS National Indicator 186	Per capita CO2 emissions in the Borough	5.7 tonnes per capita (2005)	3% reduction	6% reduction	11% reduction	Council Executive Group	LB Barnet Corporate Plan
DRIVING SUCCESS National Indicator 191	Residual household waste per head	746kg (2006/07) 728kg (2007/08) est	<u>690 kg</u>	662 kg	625 kg	Council Executive Group	LB Barnet Corporate Plan
DRIVING SUCCESS National Indicator 198	198 Children travelling to school – mode of travel usually used	45.71% (2007/08)- Primary schools Secondary school targets to be set	44%	43%	42%	Council Executive Group	LB Barnet Corporate Plan
Theme: Safer, Stronger and Cleaner Barnet							
Ambition: Reduce Crime and make residents feel safe							
TACKLING DISADVANTAGE National Indicator 16	Serious acquisitive crime rate*	Residential Burglary: 8.2 per 1000 population Commercial Robbery:0.35 per 1000 population Personal Robbery:2.57	7.51 0.34 2.54	7.29 0.33 2.50	7.07 0.33 2.48	Safer Communities Partnership Board	Safer Communities Strategy

Objective	Key measure of success	Baseline 2007/08	Target 2008/09	Target 2009/10	Target 2010/11	Lead	Link to local plan
		per 1000 population Theft of motor vehicle: 3.63 per 1000 population Theft from motor vehicle: 10.50 per 1000 population TOTAL 25.24	3.52 9.87 23.78	3.45 9.67 23.24	3.40 9.53 22.80		
TACKLING DISADVANTAGE National Indicator 18	Adult re-offending rates for those under probation supervision	TBC	TBC	TBC	TBC	Safer Communities Partnership Board	Safer Communities Strategy
TACKLING DISADVANTAGE National Indicator 20	Assault with injury crime rate	5.46 per 1000 population	5.19	5.09	4.98	Safer Communities Partnership Board	Safer Communities Strategy
TACKLING DISADVANTAGE National Indicator 24	Satisfaction with way police and local Council dealt with anti-social behaviour	TBC	TBC	TBC	TBC	Safer Communities Partnership Board	Safer Communities Strategy
TACKLING DISADVANTAGE National Indicator	Re-offending rate of prolific and priority offenders	16% reduction in convictions	18% reduction in convictions	TBC	TBC	Safer Communities Partnership	Safer Communities Strategy

Objective	Key measure of success	Baseline 2007/08	Target 2008/09	Target 2009/10	Target 2010/11	Lead	Link to local plan
30						Board	
TACKLING DISADVANTAGE National Indicator 32	Repeat incidents of domestic violence*	N/A	TBC	TBC	TBC	Safer Communities Partnership Board	Safer Communities Strategy
TACKLING DISADVANTAGE National Indicator 40	Drug users in effective treatment*	612 (2007/8 provisional)	618 (plus 1%)	624 (plus 2%)	631 (plus 3%)	Safer Communities Partnership Board	Safer Communities Strategy
TACKLING DISADVANTAGE Local Indicator	Reduce the number of young people who re-present to Criminal Justice Agencies (within the following twelve months) where alcohol is considered to be an aggravating factor on both occasions.	N/A	Base line to be set 2008/09.	5% reduction in the number of those young people re presenting for an offence that is alcohol related	5% reduction in the number of those young people re presenting for an offence that is alcohol related	Safer Communities Partnership Board	Safer Communities Strategy
Ambition: Strong and Cohesive Communities							
DRIVING SUCCESS National Indicator 4	Percentage of people who feel they can influence decisions in their area	N/A	TBC	TBC	TBC	Safer Communities Partnership Board	
DRIVING SUCCESS National Indicator 35	Building resilience to violent extremism	N/A	3	3.5	4.0	Safer Communities Partnership Board	Safer Communities Strategy
Ambition: Clean and Green							

Objective	Key measure of success	Baseline 2007/08	Target 2008/09	Target 2009/10	Target 2010/11	Lead	Link to local plan
DRIVING SUCCESS National Indicator 195	Improved street environment*	Litter and detritus - 5% (2007/08) Graffiti -12% (2007/08) Fly posting - 1% (2007/08)	Baselines to be re-set	To be set when LAA refreshed	To be set when LAA refreshed	Safer Communities Partnership Board	Safer Communities Strategy
Theme: Investing in Children and Young People							
Ambition: Every School a good school for every child							
National Indicator 72 (MANDATORY)	Achievement of at least 78 points across the Early Years Foundation Stage with at least 6 in each of the scales in Personal Social and Emotional Development and Communication, Language and Literacy	46.9% (2007)	53%	53%	Not yet set with DCSF	Children and Young People Strategic Partnership Board	Children and Young People Plan
National Indicator 73 (MANDATORY)	Achievement at level 4 or above in both English and Maths at KS 2 (Threshold)	77% (2007)	78%	79%	Not yet set with DCSF	Children and Young People Strategic Partnership Board	Children and Young People Plan

Objective	Key measure of success	Baseline 2007/08	Target 2008/09	Target 2009/10	Target 2010/11	Lead	Link to local plan
National Indicator 74 (MANDATORY)	Achievement at level 5 or above in both English and Maths at KS 3 (Threshold)	75% (2007)	New target	81%	Not yet set with DCSF	Children and Young People Strategic Partnership Board	Children and Young People Plan
National Indicator 75 (MANDATORY)	Achievement of 5 or more A*-C grades at GCSE or equivalent including English and Maths (Threshold)	59.7% (2007)	61% (Academic Year 07/08)	64.6% (AY 08/09)	Not yet set with DCSF	Children and Young People Strategic Partnership Board	Children and Young People Plan
National Indicator 83 (MANDATORY)	Achievement at level 5 or above in Science at KS 3	78% (2007)	83% (AY 07/08)	84% (08/09)	Not yet set with DCSF	Children and Young People Strategic Partnership Board	Children and Young People Plan
National Indicator 87 (MANDATORY)	Secondary school persistent absence rate	4.7% (2007)	4.65%	4.6%	Not yet set with DCSF	Children and Young People Strategic Partnership Board	Children and Young People Plan
National Indicator 92 (MANDATORY)	Narrowing the gap between the lowest achieving 20% in the Early Years Foundation Stage Profile and the rest	35.9% (2007)	28%	27.7%	Not yet set with DCSF	Children and Young People Strategic Partnership Board	Children and Young People Plan
National Indicator 93 (MANDATORY)	Progression by 2 levels in English between KS 1 and	90% (2007)	92%	95%	Not yet set with DCSF	Children and Young People	Children and Young People Plan

Objective	Key measure of success	Baseline 2007/08	Target 2008/09	Target 2009/10	Target 2010/11	Lead	Link to local plan
	KS 2					Strategic Partnership Board	
National Indicator 94 (MANDATORY)	Progression by 2 levels in Maths between KS 1 and KS 2	82% (2007)	86%	91%	Not yet set with DCSF	Children and Young People Strategic Partnership Board	Children and Young People Plan
National Indicator 95 (MANDATORY)	Progression by 2 levels in English between KS 2 and KS 3	41% (2007)	New target	43%	Not yet set with DCSF	Children and Young People Strategic Partnership Board	Children and Young People Plan
National Indicator 96 (MANDATORY)	Progression by 2 levels in Maths between KS 2 and KS 3	69% (2007)	New target	74%	Not yet set with DCSF	Children and Young People Strategic Partnership Board	Children and Young People Plan
National Indicator 97 (MANDATORY)	Progression by 2 levels in English between KS 3 and KS 4	75% (2007)	New target	75%	Not yet set with DCSF	Children and Young People Strategic Partnership Board	Children and Young People Plan
National Indicator 98 (MANDATORY)	Progression by 2 levels in Maths between KS 3 and KS 4	46% (2007)	New target	50%	Not yet set with DCSF	Children and Young People Strategic Partnership Board	Children and Young People Plan

Objective	Key measure of success	Baseline 2007/08	Target 2008/09	Target 2009/10	Target 2010/11	Lead	Link to local plan
Ambition: Improving Employability							
TACKLING DISADVANTAGE National Indicator 117	16 to 18 year olds who are not in education, training or employment (NEET)	4.6%	4.5%	4.4%	4.3%	Children and Young People Strategic Partnership Board	Children and Young People Plan
Ambition: Ensuring children are safe at home, safe at school and safe in the community							
TACKLING DISADVANTAGE National Indicator 59	Initial Assessments for children's social care carried out within 7 working days of referrals	67% (2006/07)	74%	76%	78%	Children and Young People Strategic Partnership Board	Children and Young People Plan
Ambition: Personalising Services for children and young people in vulnerable groups							
TACKLING DISADVANTAGE National Indicator 62	Stability of Looked After Children: number of moves	13% (2006/07)	11%	10%	9%	Children and Young People Partnership Board	Children and Young People Plan
TACKLING DISADVANTAGE National Indicator 19	Rate of proven re-offending by young offenders	TBC	TBC	TBC	TBC	Children and Young People Partnership Board	Children and Young People Plan Safer Communities Strategy
National Indicator 99 (MANDATORY)	Children in care reaching level 4 in English at KS 2	70% (2007)	AY 2007/08 66%	AY 2008/09 66%	Not yet set with DCSF	Children and Young People Partnership Board	Children and Young People Plan
National Indicator	Children in care	75% (2007)	AY 2007/08	AY 2008/09	Not yet set	Children and	Children and

Objective	Key measure of success	Baseline 2007/08	Target 2008/09	Target 2009/10	Target 2010/11	Lead	Link to local plan
100 (MANDATORY)	reaching level 4 in Maths at KS		66%	66%	with DCSF	Young People Partnership Board	Young People Plan
National Indicator 101 (MANDATORY)	Children in care achieving 5 A*-C GCSEs (or equivalent) at KS 4 (including English and Maths)	10.3% (2007)	13%	16%	20%	Children and Young People Partnership Board	Children and Young People Plan
DRIVING SUCCESS National Indicator 105	The Special Educational Needs (SEN)/non SEN gap – achieving 5A*-C GCSE – incl English and Maths*	53% (2006/07)	51%	49%	47%	Children and Young People Partnership Board	Children and Young People Plan
Ambition: Building resilience, supporting independence							
DRIVING SUCCESS National Indicator 102	Achievement gap between pupils eligible for Free School Meals and their peers achieving the expected level at KSs 2 & 4*	Key stage(KS) 2 29% (2006/07) KS4 32% (2006/07)	27% 31%	25% 30%	23% 29%	Children and Young People Partnership Board	Children and Young People Plan
Healthy Choices for Healthy Life							
DRIVING SUCCESS National Indicator 56	Obesity amongst primary age children	17.3% 2006/07	18.2%	18.5%	18.7%	Adult Strategy Group	Health & Well-Being Commissioning Framework

Objective	Key measure of success	Baseline 2007/08	Target 2008/09	Target 2009/10	Target 2010/11	Lead	Link to local plan
DRIVING SUCCESS National Indicator 126	Early access to maternity services	TBC	50.0%	50.0%	95%	Adult Strategy Group	Health & Well-Being Commissioning Framework
Theme: Healthier Barnet							
Ambition: Improving health and well-being							
TACKLING DISADVANTAGE National Indicator 121	Mortality rates from all circulatory diseases at ages under 75	64.04/100,000 population(2006 calendar year)	56.60 (2008 CY)	54.5 (2009 CY)	54.0 (2010 cy)	Adult Strategy Group	Health & Well-Being Commissioning Framework
TACKLING DISADVANTAGE National Indicator 123	16+ current smoking rate prevalence	1134	750	722	698	Adult Strategy Group	Health & Well-Being Commissioning Framework
Ambition: Promoting choice and maximising independence of adults, particularly those who need additional support							
TACKLING DISADVANTAGE National Indicator 125	Achieving independence for older people through intermediate care/rehabilitation*	TBC	TBC	TBC	TBC	Adult Strategy Group	Health & Well-Being Commissioning Framework
TACKLING DISADVANTAGE National Indicator 146	Adults with learning disability in employment	Estimated 8.0%	Baseline plus 3.4%	Baseline plus 6.8%	Baseline plus 10.2%	Adult Strategy Group	Health & Well-Being Commissioning Framework
TACKLING DISADVANTAGE National Indicator 149	Adults in contact with secondary mental health services in settled accommodation	Estimated 92.0%	Baseline plus 0.2%	Baseline plus 0.4%	Baseline plus 0.6%	Adult Strategy Group	Health & Well-Being Commissioning Framework

APPENDIX A: LOCAL AREA AGREEMENT 2007/08 – 2009/10 STRETCH TARGETS

Introduction

On 1 April 2007, Barnet concluded its first-ever Local Area Agreement (LAA). The format of LAAs has since changed and Barnet now has a wholly new LAA, but the Government will pay a reward grant in relation to the number of ‘stretch’ targets that are achieved by the end of the Agreement in March 2010.

The targets in this Appendix are therefore still being monitored and progressed to ensure we achieve as many as possible and receive the maximum amount of reward grant.

INVESTING IN CHILDREN AND YOUNG PEOPLE							
TYPE OF TARGET	Indicators	Baselines 2005/06 (Unless otherwise stated)	Performance 2007/08	Targets 2008/09	Targets 2009/10	For selected stretch targets	Lead partner/officer
	Be healthy						
STRETCH CYP2	<u>childhood obesity without stretch</u> Percentage of children with height and weight recorded who are obese	<u>AY 05/06</u> 14.09%	13.25%	<u>AY 07/08</u> 14.79%	<u>AY 08/09</u> 14.98%	<u>AY 09/10</u> 15.08%	Barnet Primary Care Trust
	<u>with stretch</u> Percentage of children with height and weight recorded who are obese	14.09%	•	14.19%	14.23%	14.27%	
	Enjoy and achieve						

INVESTING IN CHILDREN AND YOUNG PEOPLE							
TYPE OF TARGET	Indicators	Baselines 2005/06 (Unless otherwise stated)	Performance 2007/08	Targets 2008/09	Targets 2009/10	For selected stretch targets	Lead partner/officer
STRETCH CYP12	<u>Key stage 2</u> Without stretch a) % of half days missed through authorised and unauthorised absences in primary schools b) % of schools reaching the new National Healthy School Status	<u>AY 05/06</u> a) 5.86% <u>March 06</u> b) 15.8%		<u>AY 07/08</u> a) 5.75% <u>March 09</u> b) 64.9%	<u>AY 08/09</u> a) 5.7% <u>March 10</u> b) 74.6%	<u>AY 09/10</u> a) 5.6%	Children and Young People Strategic Partnership Board
	with stretch a) % of half days missed through authorised and unauthorised absences in primary schools b) % of schools reaching the new National Healthy School Status	<u>AY 05/06</u> a) 5.86% <u>March 06</u> b) 15.8%	<u>AY 06/07</u> • 5% <u>March 08</u> b) 54% (62 schools)	<u>AY 07/08</u> a) 5.5% <u>March 09</u> b) 70.2%	<u>AY 08/09</u> a) 5.4% <u>March 10</u> b) 83.3%	<u>AY 09/10</u> a) 5.3%	Children and Young People Strategic Partnership Board
Achieve economic well being							

INVESTING IN CHILDREN AND YOUNG PEOPLE							
TYPE OF TARGET	Indicators	Baselines 2005/06 (Unless otherwise stated)	Performance 2007/08	Targets 2008/09	Targets 2009/10	For selected stretch targets	Lead partner/officer
STRETCH CYP19	Transition (without stretch)	<u>AY 05/06</u>		<u>AY 07/08</u>	<u>AY 08/09</u>	<u>AY 09/10</u>	
	a) % of Looked After Children (who have been looked after for at least 12 months prior to sitting their exams who leave care having achieved five or more GCSE at grades A*-C (or equivalent))	24%		24.5%	25%	25%	
	b) % of young people who were looked after in their 17 th year and who, at the age of 19 are participating in education, training and employment	44% (March 06)		69%	70%		
	c) % of pupils with special educational need that achieve a level 1 qualification in English and maths	<u>AY 05/06</u> 66%		<u>AY 07/08</u> 67%	<u>AY 08/09</u> 67.5%	<u>AY 09/10</u> 68%	
d) % of 16-18 year old young people not in education, training or employment that were Barnet school leavers with a special education need	<u>January 2006</u> 35%		<u>January 2009</u> 34.5%	<u>January 2010</u> 34%			

INVESTING IN CHILDREN AND YOUNG PEOPLE							
TYPE OF TARGET	Indicators	Baselines 2005/06 (Unless otherwise stated)	Performance 2007/08	Targets 2008/09	Targets 2009/10	For selected stretch targets	Lead partner/officer
	<p>Transition (with stretch)</p> <p>a) % of Looked After Children (who have been looked after for at least 12 months prior to sitting their exams who leave care having achieved five or more GCSE at grades A*-C (or equivalent)</p> <p>b) % of young people who were looked after in their 17th year and who, at the age of 19 are participating in education, training and employment</p> <p>c) % of pupils with special educational need that achieve level 1 qualification in English and maths</p> <p>d) % of 16-18 year old young people not in education, training or employment that were Barnet school leavers with a special education need</p>	<p><u>AY 05/06</u></p> <p>24%</p> <p>44% (March 06)</p> <p>66%</p> <p><u>January 2006</u> 35%</p>	<p><u>AY 06/07</u></p> <p>21%</p> <p>64%</p> <p><u>AY 06/07</u> 77%</p> <p><u>January 2008</u> 18%</p>	<p><u>AY 07/08</u></p> <p>24%</p> <p>72%</p> <p><u>AY 07/08</u> 68%</p> <p><u>January 2009</u> 31%</p>	<p><u>AY 08/09</u></p> <p>26%</p> <p>75%</p> <p><u>AY 08/09</u> 70%</p> <p><u>January 2010</u> 29%</p>	<p><u>AY 09/10</u></p> <p>28%</p> <p><u>AY 09/10</u> 72%</p>	

SAFER, STRONGER AND CLEANER BARNET						
TYPE OF TARGET	Indicators	Baselines 2005/06 (Unless otherwise stated)	Performance 2007/08	Targets 2008/09	Targets 2009/10	Lead partner/ Officer
Reduce Crime						
STRETCH SSC2	Violent Crime: <u>Without stretch</u> Reduce Common Assault, wounding. (ABH and GBH)	4,320		3,623	3,478	Safer Communities Partnership Board
	<u>With stretch</u> Reduce Common Assault, wounding. (ABH and GBH)	4,320	3501	3,585	3,406	
STRETCH SSC3	Motor Vehicle Crime: <u>Without stretch</u> To reduce: <ul style="list-style-type: none"> • theft from motor vehicles • theft of, taking of motor vehicles 	1,994 4,320		1,472 4,104	1,325 4,104	Safer Communities Partnership Board
	<u>With stretch</u> To reduce: <ul style="list-style-type: none"> • theft from motor vehicles • theft of, taking of motor vehicles 	1,944 4,320	1193 3450	1,422 4,018	1,266 4,018	

SAFER, STRONGER AND CLEANER BARNET						
TYPE OF TARGET	Indicators	Baselines 2005/06 (Unless otherwise stated)	Performance 2007/08	Targets 2008/09	Targets 2009/10	Lead partner/ Officer
STRETCH SSC4	<u>Without Stretch</u> Domestic Violence Increase in the number of offences of domestic violence recorded annually either directly to the police or through a third party	2,061		2,494	2,743	Safer Communities Partnership Board
	<u>With Stretch</u> Domestic Violence Increase in the number of offences of domestic violence recorded annually either directly to the police or through a third party	2,061	2,308	2,585	2,895	
	<u>Without Stretch</u> Domestic Violence <i>Increase the percentage of domestic violence offences which result in sanctioned detections</i>	493		701	742	
	<u>With Stretch</u> Domestic Violence <i>Increase the percentage of domestic violence incidents which result in sanctioned detections</i>	493	639	742	783	

SAFER, STRONGER AND CLEANER BARNET						
TYPE OF TARGET	Indicators	Baselines 2005/06 (Unless otherwise stated)	Performance 2007/08	Targets 2008/09	Targets 2009/10	Lead partner/ Officer
	<u>Without Stretch</u> Domestic Violence Reduce repeat victimisation of high risk DV survivors who are being managed by a Multi-Agency Risk Assessment Conference (MARAC).	2007/8 6.33%		Not set	Not set	
	<u>With Stretch</u> Domestic Violence Reduce repeat victimisation of high risk DV survivors who are being managed by a Multi-Agency Risk Assessment Conference (MARAC)	2007/8 6.33%	6.33%	6.01%	5.71%	
Increase domestic fire safety and reduce arson						
STRETCH SSC6	<u>Without stretch</u> The average number of accidental dwelling fires	261		244	241	Safer Communities Partnership Board
	<u>With stretch</u> The average number of accidental dwelling fires	261	231	238	238	
	<u>Without stretch</u> The average number of deliberate primary fires	103		87	85	
	<u>With stretch</u> The average number of deliberate primary fires	103	110	81	81	
Build Respect in communities and reduce anti-social behaviour						

SAFER, STRONGER AND CLEANER BARNET						
TYPE OF TARGET	Indicators	Baselines 2005/06 (Unless otherwise stated)	Performance 2007/08	Targets 2008/09	Targets 2009/10	Lead partner/ Officer
MANDATORY SSC10	(The following indicators should draw on data in the Local Government User Satisfaction Survey)					
	<u>Without stretch</u>					
	Reduce people's perceptions of ASB -using the 7 issues stated in the 06/07 BVPI 3 year survey	20%		20%	20%	Safer Communities Partnership Board
	<u>With stretch</u>					
	<ul style="list-style-type: none"> Reduce people's perceptions of ASB -using the 7 issues stated in the 06/07 BVPI 3 year survey 	20%	16%	17%	15%	Safer Communities Partnership Board
Empower local people to have a greater voice and influence over local decision making and a greater role in public service delivery						

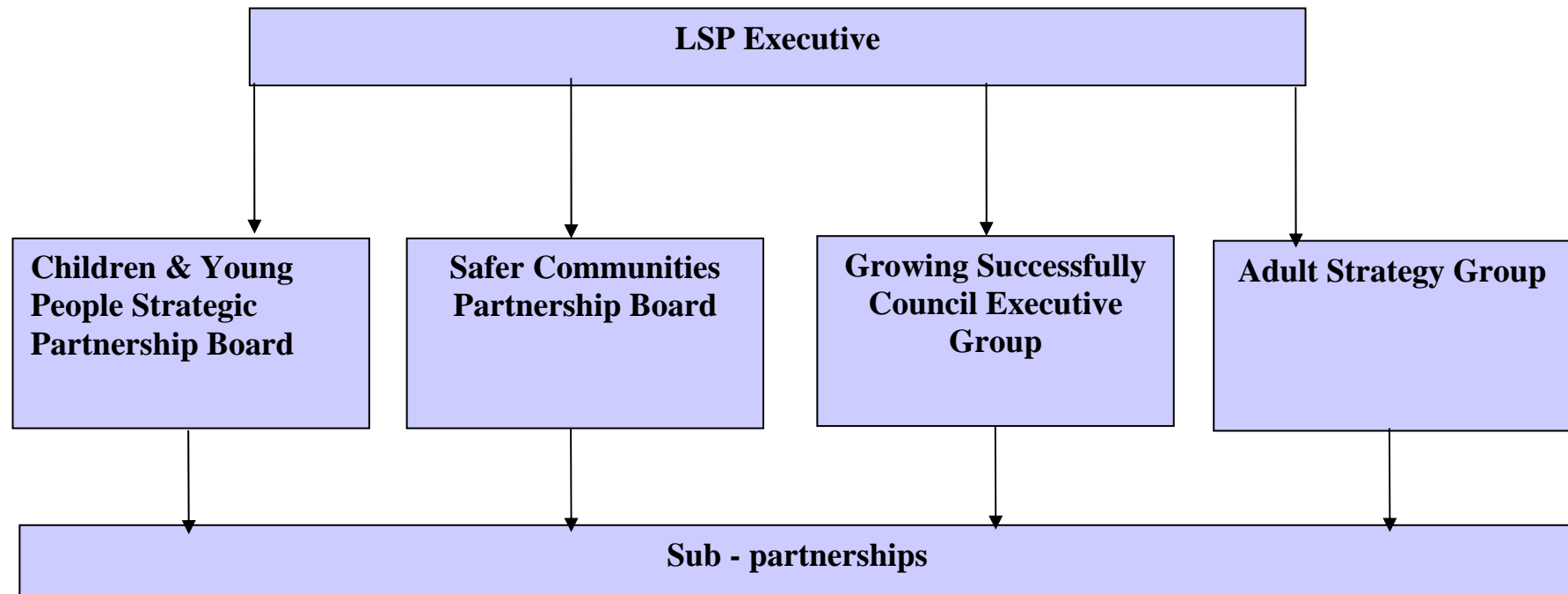
SAFER, STRONGER AND CLEANER BARNET						
TYPE OF TARGET	Indicators	Baselines 2005/06 (Unless otherwise stated)	Performance 2007/08	Targets 2008/09	Targets 2009/10	Lead partner/ Officer
STRETCH SSC12	<u>Without stretch</u> The number of residents recorded as or reporting that they have engaged in informal voluntary work through groups, clubs or organisations to benefit other people or the environment for an average of 2 hours a week or more over a twelve month period during the lifetime of the LAA, broken down into a. Standard volunteers	22 (set 2007)		20	180	Safer Communities Partnership Board
	b. Volunteers from socially excluded groups	14 (set 2007)		10	50	
	<u>With stretch</u> The number of residents recorded as or reporting that they have engaged in informal voluntary work through groups, clubs or organisations to benefit other people or the environment for an average of 2 hours a week or more over a twelve month period during the lifetime of the LAA, broken down into a. Standard volunteers	As above	39	30	200	
	b. Volunteers from socially excluded groups	As above	31	18	100	

HEALTHIER BARNET AND OLDER PEOPLE						
TYPE OF TARGET	Indicators	Baselines 2005/06 (Unless otherwise stated)	Performance 2007/08	Targets 2008/09	Targets 2009/10	Lead partner/ Officer
Reduce premature mortality rates and reduce inequalities in premature mortality rates between wards/neighbourhoods with a particular focus on reducing the risk factors for heart disease, stroke and related diseases (CVD) (smoking, diet and physical activity)						
STRETCH HCOP6	<u>without stretch</u> Smoking quitters in the seven most deprived wards (annual figures)	286	1065	378	490	Adult Strategy Group
	<u>with stretch</u> Smoking quitters in the seven most deprived wards (annual figures)	---		445	578	
STRETCH HCOP7	<u>without stretch</u> Number of patients completing Phase IV Cardiac Rehabilitation Programme	181	200- to be updated	350	500	Adult Strategy Group
	<u>with stretch</u> Number of patients completing Phase IV Cardiac Rehabilitation Programme	----	350- to be updated	500	650	
Choice and independence						
HCOP9	<u>without stretch</u> The number of direct payments for adults in Barnet aged 18 and over (including carers and carers of disabled children) and for young disabled people aged 16-17 years old.	267		433	485	Adult Strategy Group

Last updated 15 July 2008

HEALTHIER BARNET AND OLDER PEOPLE						
TYPE OF TARGET	Indicators	Baselines 2005/06 (Unless otherwise stated)	Performance 2007/08	Targets 2008/09	Targets 2009/10	Lead partner/ Officer
	with stretch The number of direct payments for adults in Barnet aged 18 and over (including carers and carers of disabled children) and for young disabled people aged 16-17 years old.	267	674	524	600	

Appendix B: Delivering the Sustainable Community Strategy: Structural Chart



Appendix C: Delivering the Sustainable Community Strategy: Performance Management Framework

The LSP has overall responsibility to ensure the targets in the Strategy are delivered, and to step in where there are significant areas of concern or under-performance. To undertake this role;

- Performance information on strategy targets will be collated quarterly and performance monitoring reports will be circulated to LSP members
- Performance against targets will be reported and challenged by the LSP on a 6 monthly basis. The LSP will use 'First Stat'³ meetings for 6 month and end of year performance management. These meetings will be very targeted and focused on areas of significant concern or under-performance. The first one will be in November 2008.
- Officers accountable for targets across partner organisation will be present at meetings to explain performance. Also present will be LSP members and senior managers across LSP organisations. They will help challenge performance, problem-solve and propose actions to tackle under-performance.

Progress against the targets will be the subject of a public report at least annually.

Thematic partnership boards will take day-to-day responsibility for their relevant Local Area Agreement targets and monitor, report and review these at least quarterly (in addition to any targets in their own more specific plans). The chairs of these boards may be asked from time to time to attend LSP meetings to report progress or discuss particular issues.

Abbreviations

ASB: Anti Social Behaviour

BVPI: Best Value Performance Indicator

LAA: Local area Agreement

DCSF: Department for Children Schools and Families

³ The First Stat model of performance management involves a rigorous and corporate scrutiny of performance by all key stakeholders. It aims to develop a corporate and collaborative problem solving approach, with a focus on detail to help develop understanding of issues and to identify a range of actions to improve performance