

Barnet Youth Offending Service

Orders given by the Court



Coproduced by JD and YB
as part of their Reparation-10/06/2019



Referral Order (RO)

- You will appear before a Referral Order Panel accompanied by your parent/ carer
- A contract will be developed with you setting out what you will need to do to complete your Oder
- A Referral Order can be between 3 and 12 months long.
- Aim to stop you re-offending and make sure you are aware of the impact and consequences of your criminal behaviour, including the wishes and feelings of the victims of your crime. This is called 'Restorative Justice'
- Give you a second chance of a non-criminal future. The sentence is 'spent ' at the end of the Order, if you have kept to the terms of your contract.

<p>Referral Order Panel meetings</p>	<p>Who will be at RO Panel meetings?</p> <ul style="list-style-type: none"> • Specially trained volunteer panel members. • Youth Offending Service (YOS) Officer. • The victim will sometimes attend • Your parent/carer 	<p>What will happen?</p> <ul style="list-style-type: none"> • Contract of reparation (payback) to the victim will be agreed. • Programme of work to address offending behavior.
<p>Referral Order Contract</p>	<p>What is in a Referral Order Contract?</p> <ul style="list-style-type: none"> • You will need to take part in Interventions which may include you meeting with the victim of your crime. • The victim will have the opportunity to ask you to do some work for them as 'payback' for the offence, this is called 'Reparation' 	<p>Types of Reparation</p> <p>Direct Payback that benefits the victim directly</p> <p>Indirect Payback that benefits the community, e.g. activities.</p>

Restorative Justice

Types of work with restorative justice:

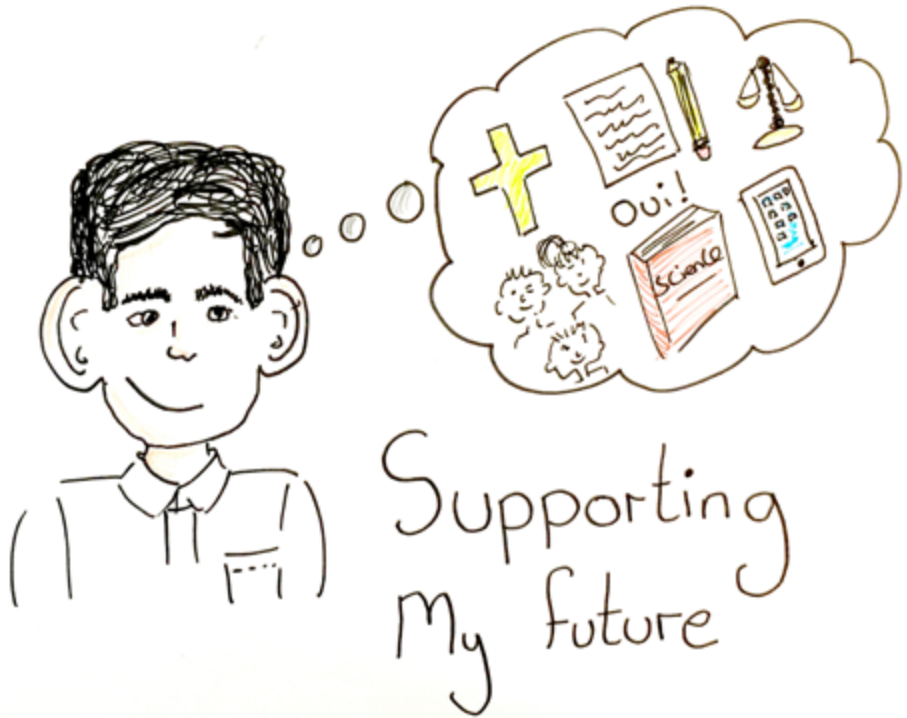
Victim/ Offender mediation	<ul style="list-style-type: none">• You meet the victim to explain your actions and to apologise.• It helps the victim to explain the problems it caused and hopefully reduce the fear of it happening again.
Direct Reparation	Payback that benefits the victim directly. For example: <ul style="list-style-type: none">• Write a letter of apology to the victim.• Take part in several hours of practical activity to benefit:<ul style="list-style-type: none">- the victim- local community- charity organization the victim is involved with.
Indirect Reparation	Payback that benefits the community. For example: <ul style="list-style-type: none">• Bike Project• Equestrian Centre• Outdoor Centre• Men shed• BACA• Wild About Our Woods (WAOW)

Parenting Orders

- A Parenting Order is what is called a ‘Civil Order’ and it means your parents must comply for with specific requirements in the Order for up to 12 months i.e. making sure you go to school or attending a parenting programme

The aim of the Parenting Order

- To help parents prevent their children from getting in trouble with the police by:
 - Supporting parents to bring about improvements in their child’s behavior and reinforcing their parental responsibilities through devised intervention packages as part of a community sentence, e.g. Community Rehabilitation Order.



Coproduced by JD and YB
as part of their Reparation-10/06/2019

Youth Rehabilitation Order (YRO)

- A Youth Rehabilitation Order means you must be supervised by a member of the YOS.
- Your co-operation and the support of your family are essential if it is to be of use to you.
- You will be expected to:
 - consider the effect the crime has on its victims
 - make amends for your behaviour
- The purpose of the order:
 - to help you to do what is necessary to stop offending
 - to protect the public from harm.

How long

- a YRO can be made for up to 2 years.
- If you make good progress, you or your YOS Officer can ask the Court to end the Order early.
- You must complete at least half the sentence satisfactorily and not commit another offence for this to happen.
- Your Order will be organised by your YOS worker (Supervising Officer). A plan will be produced with you and your parents/carers
- You and your parent / carer will be asked to review your plan with your Supervising Officer every 3 months.

Rules of a YRO

To comply with your YRO you must:

- Tell us if you change address
- Attend when required
- Arrive on time for appointments
- Comply with any reasonable directions, this means do what you are asked to do.
- Comply with all requirements of your Order

During the Order, the following behaviour is not allowed:

- Turning up drunk or showing signs of drug use
- Fighting, aggressive behaviour or threats of violence
- Behaving or using language that may offend:
 - Staff
 - Other people under supervision
 - Members of the public
- Ignoring what you are asked to do.
- Behaviour that stops you or other people making progress.

YRO with Intensive Supervision and Surveillance (ISS)

- A YRO with ISS is the highest level of community sentencing available for young people.
- A YRO with ISS will include community-based surveillance focused on working out why you have committed the offences you have been sentenced for and understanding your behaviour.
- The YRO will include, direct or indirect payback and access to support and positive opportunities, available 365 days a year.

You can have ISS when:

- Bail is agreed where you are at risk of being remanded into custody
- It is a requirement as part of a YRO
- It is a condition of a Notice of Supervision on release from custody

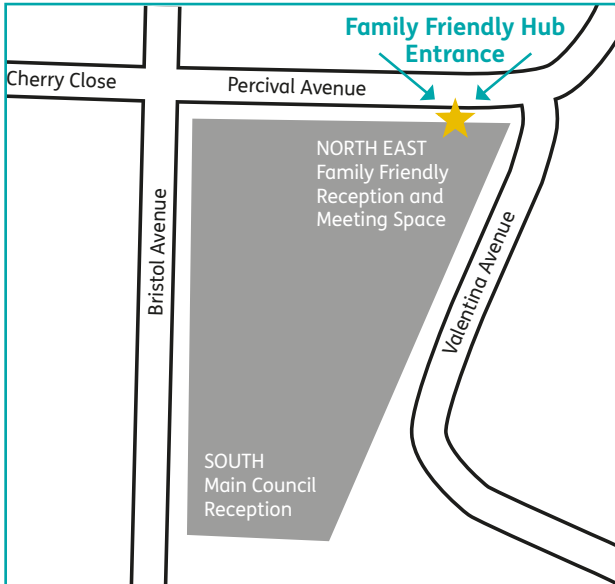
The aim of the ISS	How this will be achieved?	Who is ISS is designed for?
<p>Help you make good for your offence</p> <ul style="list-style-type: none"> • Deal with the reason for your offence • Support you avoid offending in the future • Manage the risks you pose to the community • Stabilise your lifestyle • Reintegrate you into the community • Help you lead an independent life free of offending. 	<ul style="list-style-type: none"> • Think about Offending Behaviour • Develop Interpersonal Skills • Education/Training/ Employment • Family Support • Restorative Justice 	<p>ISS is targeted at two main groups:</p> <ul style="list-style-type: none"> • Prolific which means young people aged 10-18 who commit around a high level of offences and young people who have committed 4 or more offences in 12 months • Those who commit crimes of a very serious nature and who would benefit from an early and intensive intervention.

Detention and Training Order (DTO)

Custodial sentence for young people aged 12-18 years old who:

- Commit a serious offence or a number of offences.
- Consistently fail to comply with community sentences.

What happens in Court?	How long will I be there?	What about time spent on remand?
<ul style="list-style-type: none"> • After sentencing you will be escorted to police cells and held there. • You will be told the name of the custodial setting that you will be going to and where it is <p>You will be taken by secure escort to the custodial setting</p> <ul style="list-style-type: none"> o 12-14-year old's usually go to a Local Authority Secure Unit o 14-16-year old's will usually go to a Secure Training Centre o 15-18-year old's can also go to a Young Offender Institution (unless they are considered to be vulnerable e.g. have learning difficulties). 	<ul style="list-style-type: none"> • Usually between 4 months and 2 years. • The first half will be in the custodial setting. • The second half will be supervised by the Youth Offending Service in the community. • Sometimes you might get earlier release. • Earlier release needs to be agreed - you may be 'tagged' and have a curfew. 	<ul style="list-style-type: none"> • Time spent on remand can be considered by Magistrates or the Judge when assessing the length of sentence. • The exact time spent on remand does not have to be taken from your sentence



Main office address:

**Youth Offending Service
London Borough of Barnet
2 Bristol Avenue,
Colindale,
London
NW9 4EW**

Telephone: 0208 359 5501/5535

Please visit this link to know more about how we support CYP in Barnet Youth Offending Service.

<https://www.youtube.com/watch?v=YPB04vPOYjQ&feature=youtu.be>



Coproduced by JD and YB
as part of their Reparation-10/06/2019