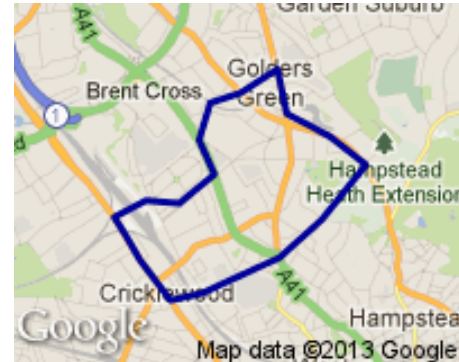


Profile of Childs Hill Ward



Geography

Childs Hill is the twelfth largest of Barnet’s wards with an area of 3.1 square kilometres.

Population

With 19,460 residents in 2012, Childs Hill is the most populous ward in Barnet. It is not expected to grow in the next decade, dropping slightly to 19,358 residents, and it will move down to 4th largest in the borough, overtaken by Colindale, Golders Green and Mill Hill. (Source: Barnet Hybrid Solution updated for MYE Jan 2012 update)

Population Density: 64.9 per hectare Ward Rank in Barnet: 5th most dense

No. of Households: 7686

(Source: Census 2011¹)

Age Profile

Childs Hill ward’s age structure mirrors that of the borough as a whole, apart from slightly more residents in the 15-39 age group and slightly less in the 40-59 group. (Source: Barnet Hybrid Solution updated for MYE Jan 2012 update)

Figure 1. Age Profile

2012	0-14	15-39	40-59	60-79	80+
Childs Hill	20%	43%	20%	12%	5%
BARNET	21%	35%	26%	14%	4%

¹ Census output is Crown copyright and is reproduced with the permission of the Controller of HMSO and the Queen's Printer for Scotland.

Ethnicity

50% of Childs Hill residents describe their ethnic origin as White British; the third lowest proportion in Barnet and lower than the Barnet average of 60%. The ward has the highest proportion in Barnet of residents who describe their ethnic origin as White Other (19% against the borough average of 11%) and those who are Mixed: Other mixed.

(Source: Barnet Census Profiles 2001)

Religion

In terms of faith Childs Hill has a slightly higher than average proportion of Muslims among its residents, 14% as against the borough average of 10%. Childs Hill also has a slightly higher proportion of Jewish residents (17% against the borough average of 15%).

(Source: Census 2011)

Figure 2. Religion Profile

Ward/Area	Christian	Buddhist	Hindu	Jewish	Muslim	Sikh	Other Religion	No Religion	Religion not stated
BARNET	41%	1%	6%	15%	10%	0%	1%	16%	8%
Childs Hill	38%	1%	3%	17%	14%	0%	1%	16%	9%

Languages

62% of school children in Childs Hill do not speak English as a first language in the home. This is higher than the Barnet average (44%). Arabic, Somali and Polish are the most common languages other than English spoken in the homes of Childs Hill pupils attending Barnet schools (with 156, 73 and 72 pupils respectively).

(Source: PLASC January 2012: this data does not include pupils from Childs Hill who attend private schools or schools outside Barnet.)

Deprivation

The 2010 Index of Deprivation shows Barnet as a whole to be the 176th most deprived local authority out of the 354 for England and Wales – slightly below the average. Barnet has become less deprived in relation to England over the last three years. None of the SOA's² in Childs Hill are within the 10% most income deprived nationally.

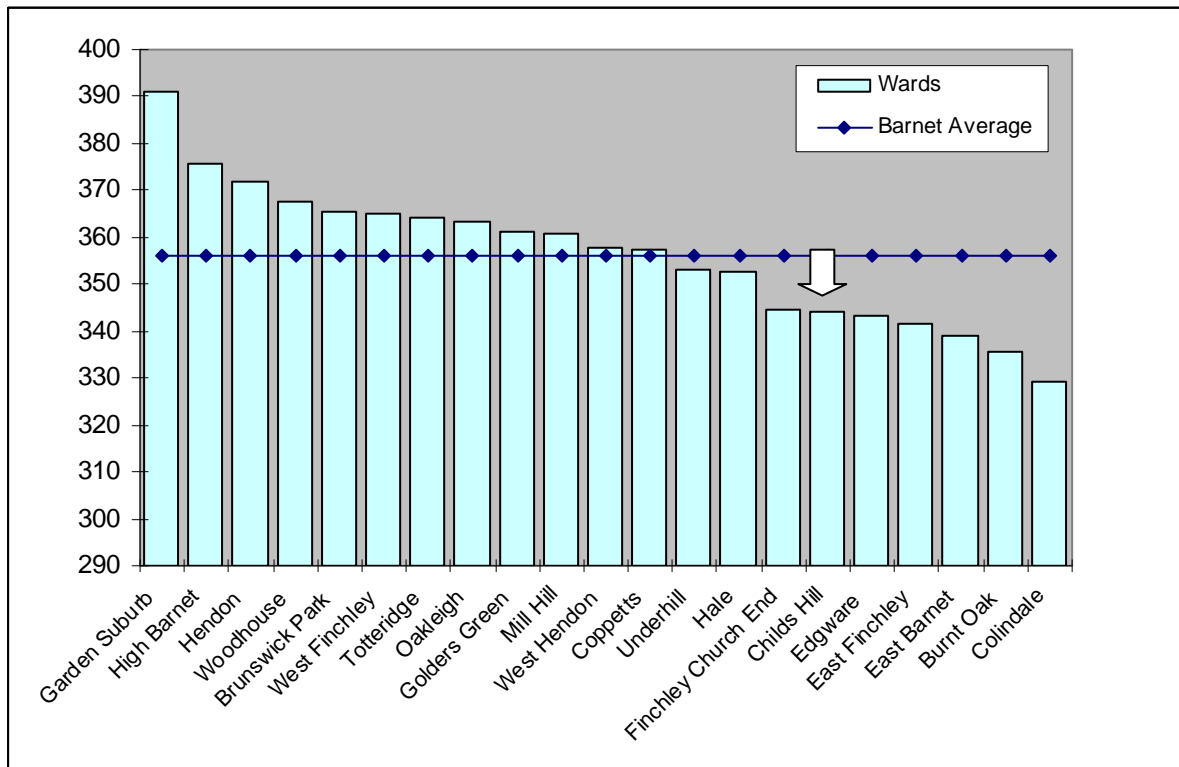
(Source: http://www.barnet.gov.uk/download/downloads/id/2348/deprivation_in_barnet_2012)

Education

The data for 2011/12 in the graph below shows the results for the 2,655 Barnet residents attending Barnet schools who took GCSEs. It shows pupils living in Childs Hill had the sixteenth highest GCSE equivalent point scores per pupil in the borough, below the Barnet average. (Source: Performance & Data Management, Children's Service, LBB)

² Lower Super Output Areas (LSOAs) are standard statistical geographies developed by the Office for National Statistics, which contain around 1,500 people.

Figure 3. Average GCSE scores for 2011/12, by pupil's ward of residence



Income

Data from the company CACI shows Childs Hill to have a median average household income of £33,271 – below the borough average which was £33,701, and the fourteenth highest in the borough. (Source: CACI Paycheck data 2012)

Working Age Benefits

The Jobseeker's allowance (JSA) is payable to people under pensionable age who are available for, and actively seeking, work. The overall rate of claiming for Childs Hill residents is higher than the borough level but just above than national level.

(Source: www.nomisweb.co.uk)

Figure 4. Total Jobseekers Allowance claimants (February 2013)

	Childs Hill (numbers)	Childs Hill (%)	Barnet (%)	Great Britain (%)
All people	500	3.8	2.8	3.9
Males	291	4.5	3.5	5.1
Females	209	3.2	2.2	2.7

Figure 5. DWP benefit claimants (August 2012)

	Childs Hill (numbers)	Childs Hill (%)	Barnet (%)	Great Britain (%)
Total claimants	1,605	12.3	10.9	14.3
Job seekers	460	3.5	2.8	3.7
ESA and incapacity benefits	695	5.3	4.7	6.3
Lone parents	200	1.5	1.3	1.4
Carers	105	0.8	0.9	1.2
Others on income related benefits	55	0.4	0.3	0.4
Disabled	80	0.6	0.8	1.1
Bereaved	10	0.1	0.2	0.2
Total claimants	1,605	12.3	10.9	14.3

Health

Average life expectancy is a key summary indicator of health. For men, the Childs Hill figure is lower than the average for Barnet, London & England average. For women it is slightly lower than the average for Barnet, and higher than London & England.

(Source: ONS Life expectancy by ward 1999-2007)

Figure 6. Life Expectancy in Years

	Males	Females
Childs Hill	76.9	82.1
Barnet	78.6	82.7
London	77.1	81.7
England	77.3	81.5

Crime

For all categories except 'Burglary' and 'Fraud or forgery', crime rates in the year to February 2013 in Barnet are low compared with London as a whole. In the case of Childs Hill, it is higher than the Barnet average in all categories.

(Source: Metropolitan Police Service).

Note: a crime is categorised as a robbery where force is intimidated or used to steal property. Burglary is theft, or attempted theft, from a building where access is not authorised.

Mosaic

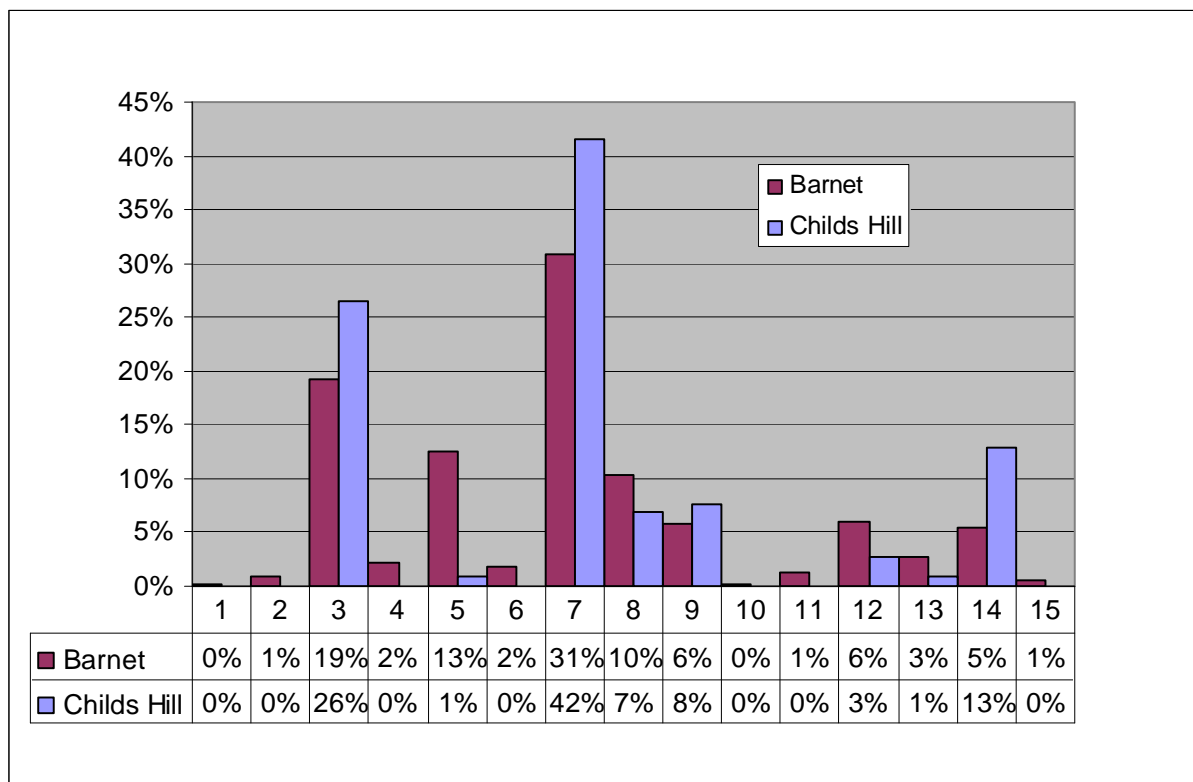
The council has bought the data used in this section from a commercial organisation, Experian. If the findings are used in other documents then this source must be acknowledged and copyright quoted in the following way: Mosaic data 2010 © Copyright 2004 Experian Ltd

- Experian’s Mosaic data brings together a large amount of data about areas and individual households from a variety of sources to classify all households according to 15 Groups and 67 Types. Experian does not claim one hundred percent accuracy for this product but it does use strong correlations to arrive at good predictions about the nature of each household in the borough. The classifications are highly detailed but summed up with a headline phrase.

Mosaic Groups

- Childs Hill has more than the borough average of Group 7 (Barnet’s most popular group) which are Young well-educated city-dwellers, and also of Group 3; Wealthy people living in the most sought after neighbourhoods.
- Childs Hill has more than the borough average of Group 14: Young people renting flats in high density social housing.

Figure 7. Mosaic Groups in Childs Hill



Group Code	Group Description
1	Residents of isolated rural communities
2	Residents of small and mid-sized towns with strong local roots
3	Wealthy people living in the most sought after neighbourhoods
4	Successful professionals living in suburban or semi-rural homes
5	Middle income families living in moderate suburban semis
6	Couples with young children in comfortable modern housing
7	Young, well-educated city dwellers
8	Couples and young singles in small modern starter homes

Group Code	Group Description
9	Lower income workers in urban terraces in often diverse areas
10	Owner occupiers in older-style housing in ex-industrial areas
11	Residents with sufficient incomes in right-to-buy social housing
12	Active elderly people living in pleasant retirement locations
13	Elderly people reliant on state support
14	Young people renting flats in high density social housing
15	Families in low-rise social housing with high levels of benefit need