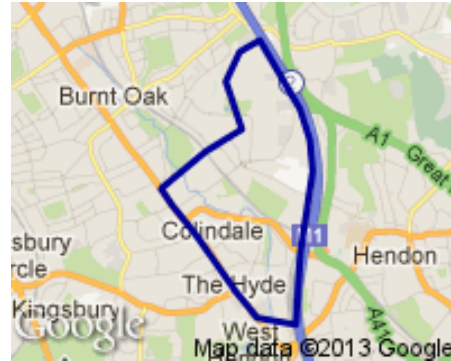
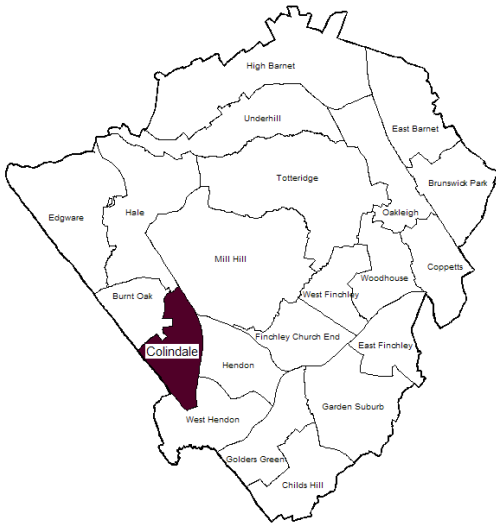


Profile of Colindale Ward



Geography

Colindale is the 17th largest of Barnet’s 21 wards with an area of 2.6 square kilometres.

Population

In 2012 Colindale is the 3rd most populous ward with 18,727 residents. In the next decade it is projected to increase substantially by 90% to 35,363 residents, and will become the largest ward. (Source: Barnet Hybrid Solution updated for MYE Jan 2012 update)

Population Density: 64.7 per hectare Ward Rank in Barnet: 6th most dense

No. of Households: 6290

(Source: Census 2011¹)

Age Profile

The ward’s age structure mirrors that of the borough as a whole in the younger age groups but has more people in the 15-39 age group and less people in the 40-79 age groups, with significantly less in the 80+ age group. (Source: Barnet Hybrid Solution updated for MYE Jan 2012 update)

Figure 1. Age Profile

2012	0-14	15-39	40-59	60-79	80+
COLINDALE	21%	47%	21%	10%	1%
BARNET	21%	35%	26%	14%	4%

¹ Census output is Crown copyright and is reproduced with the permission of the Controller of HMSO and the Queen's Printer for Scotland.

Ethnicity

12.8% of Colindale residents describe their ethnic origin as Black African; the highest proportion in Barnet and higher than the Barnet average of 4.3%. 4% of Colindale residents describe their ethnic origin as Chinese – the highest proportion in Barnet and above the 2% figure for the borough.

(Source: Barnet Census Profiles 2001)

Religion

In terms of faith the ward has the highest proportion of Muslims among its residents (19% against 10% for the borough), a slightly higher proportion of Hindu residents (10% against average of 6%). 47% of Colindale residents are Christian, slightly above the figure of 41%. Colindale has the joint lowest (with Burnt Oak) proportion of Jewish residents in Barnet, 1% against the borough average of 15%. (Source: Census 2011)

Figure 2. Religion Profile

Ward/Area	Christian	Buddhist	Hindu	Jewish	Muslim	Sikh	Other Religion	No Religion	Religion not stated
BARNET	41%	1%	6%	15%	10%	0%	1%	16%	8%
Colindale	47%	2%	10%	1%	19%	0%	0%	13%	7%

Languages

63% of school children in Colindale do not speak English as a first language in the home. This is significantly higher than the Barnet average (44%). Somali, Arabic and Tamil are the most common languages other than English spoken in the homes of Colindale pupils attending Barnet schools (with 188, 129 and 109 pupils respectively), followed by Portuguese, Persian-Farsi and Albanian-Shqip.

(Source: PLASC January 2012: this data does not include pupils from Colindale who attend private schools or schools outside Barnet.)

Deprivation

The 2010 Index of Deprivation shows Barnet as a whole to be the 176th most deprived local authority out of the 354 for England and Wales – slightly below the average. Barnet has become less deprived in relation to England over the last three years. Some of the LSOA's² in Colindale are within the 10% most income deprived nationally for employment and income.

(Source: http://www.barnet.gov.uk/download/downloads/id/2348/deprivation_in_barnet_2012)

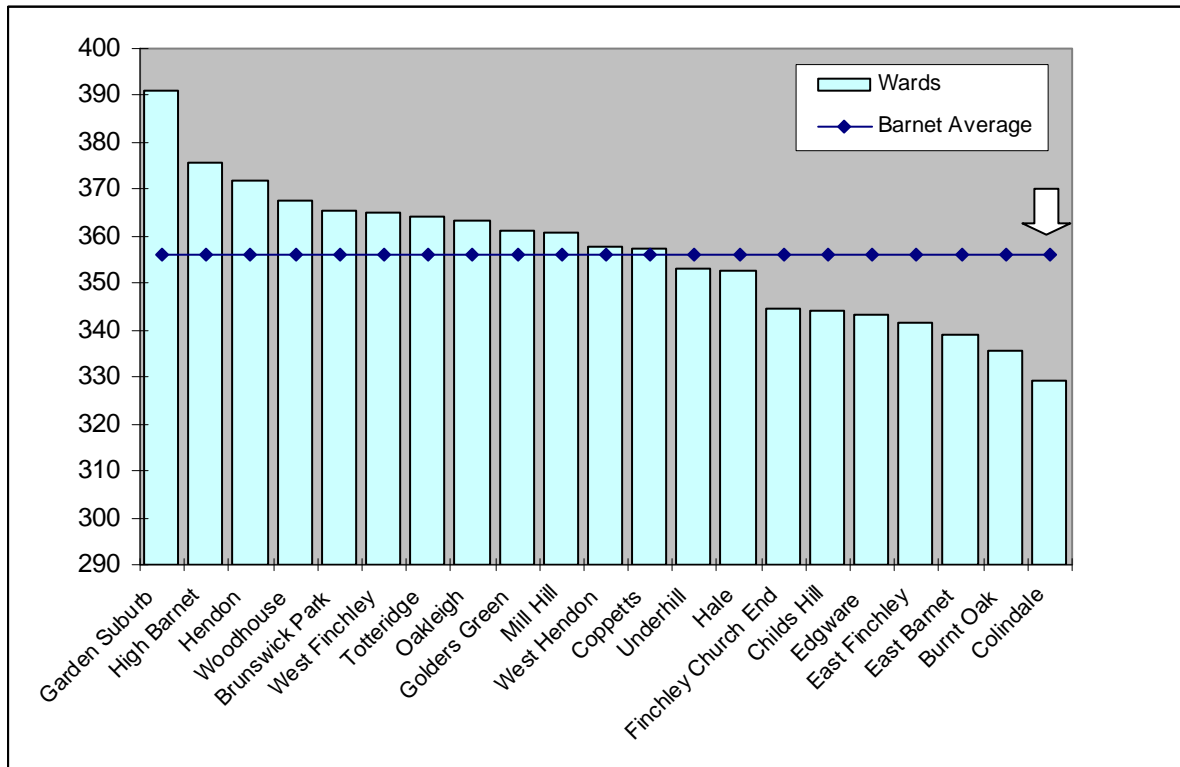
² Lower Super Output Areas (LSOAs) are standard statistical geographies developed by the Office for National Statistics, which contain around 1,500 people.

Education

The data for 2011/12 in the graph below shows the results for the 2,655 Barnet residents attending Barnet schools who took GCSEs. It shows pupils living in Colindale had the lowest GCSE equivalent point scores per pupil in the borough.

(Source: Performance & Data Management, Children's Service, LBB)

Figure 3. Average GCSE scores for 2011/12, by pupil's ward of residence



Income

Data from the company CACI shows Colindale to have a median average household income of £27,048 – below the borough average which was £33,701, and the second lowest in the borough. (Source: CACI Paycheck data 2012)

Working Age Benefits

The Jobseeker's allowance (JSA) is payable to people under pensionable age who are available for, and actively seeking, work. The overall rate of claiming for Colindale residents is higher than both the borough and national levels. (Source: www.nomisweb.co.uk)

Figure 4. Total Jobseekers Allowance claimants (January 2013)

	Colindale (numbers)	Colindale (%)	Barnet (%)	Great Britain (%)
All people	422	3.9	2.8	3.8
Males	252	4.6	3.4	5.0
Females	170	3.1	2.2	2.6

Figure 5. DWP benefit claimants (May 2012)

	Colindale (numbers)	Colindale (%)	Barnet (%)	Great Britain (%)
All people	1,725	15.8	11.0	14.4
Job seekers	415	3.8	2.8	3.7
ESA & Incapacity benefits	720	6.6	4.7	6.3
Lone parents	305	2.8	1.4	1.5
Carers	125	1.1	0.9	1.2
Others on income related benefits	60	0.5	0.3	0.4
Disabled	85	0.8	0.8	1.1
Bereaved	15	0.1	0.2	0.2
Key out-of-work benefits ³	1,500	13.7	9.2	11.9

Health

Average life expectancy is a key summary indicator of health. For men, the Colindale figure is lower than the average for Barnet, London & England. For women, the figure is slightly lower than the Barnet average but higher than the average for London and England.

(Source: ONS Life expectancy by ward 1999-2007)

Figure 6. Life Expectancy in Years

	Males	Females
Colindale	76.2	82.5
Barnet	78.6	82.7
London	77.1	81.7
England	77.3	81.5

Crime

For all categories except 'Burglary' and 'Fraud or forgery', crime rates in the year to February 2013 in Barnet are low compared with London as a whole. In the case of Colindale, it is either equal to, or in more cases, above the Barnet average in all categories, except for 'Burglary' and 'Theft and Handling'.

(Source: Metropolitan Police Service).

Note: a crime is categorised as a robbery where force is intimidated or used to steal property. Burglary is theft, or attempted theft, from a building where access is not authorised.

³ Key out-of-work benefits includes the groups: job seekers, ESA and incapacity benefits, lone parents and others on income related benefits

Mosaic

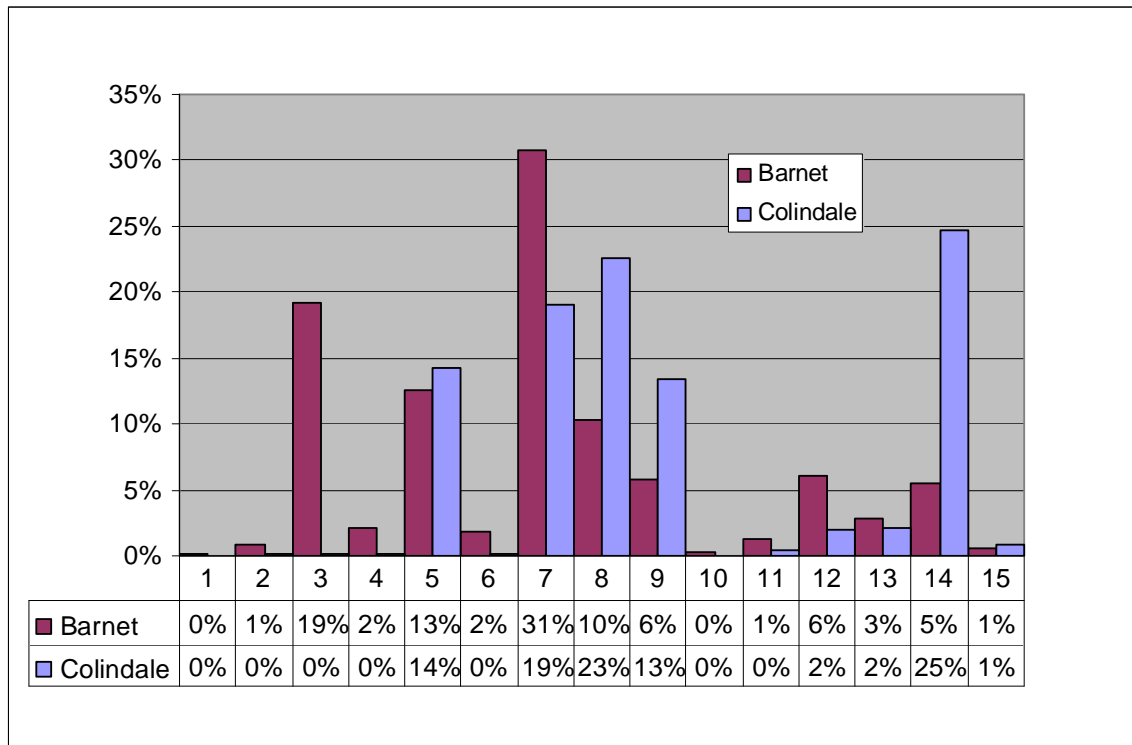
The council has bought the data used in this section from a commercial organisation, Experian. If the findings are used in other documents then this source must be acknowledged and copyright quoted in the following way: Mosaic data 2010 © Copyright 2004 Experian Ltd

- Experian's Mosaic data brings together a large amount of data about areas and individual households from a variety of sources to classify all households according to 15 Groups and 67 Types. Experian does not claim one hundred percent accuracy for this product but it does use strong correlations to arrive at good predictions about the nature of each household in the borough. The classifications are highly detailed but summed up with a headline phrase.

Mosaic Groups in Colindale

- Colindale has a substantially higher than average proportion of households in Group 14; these are Young people renting flats in high density social housing. There are also a larger proportion on Group 8; Couples and young singles in small modern starter homes.
- Colindale has substantially less than the borough average of Group 7 (Barnet's most popular group) which are Young educated city-dwellers.

Figure 7. Mosaic Groups in Colindale



Group Code	Group Description
1	Residents of isolated rural communities
2	Residents of small and mid-sized towns with strong local roots
3	Wealthy people living in the most sought after neighbourhoods
4	Successful professionals living in suburban or semi-rural homes
5	Middle income families living in moderate suburban semis
6	Couples with young children in comfortable modern housing
7	Young, well-educated city dwellers
8	Couples and young singles in small modern starter homes

Group Code	Group Description
9	Lower income workers in urban terraces in often diverse areas
10	Owner occupiers in older-style housing in ex-industrial areas
11	Residents with sufficient incomes in right-to-buy social housing
12	Active elderly people living in pleasant retirement locations
13	Elderly people reliant on state support
14	Young people renting flats in high density social housing
15	Families in low-rise social housing with high levels of benefit need