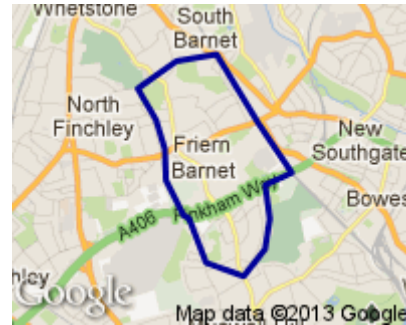


Profile of Coppetts Ward



Geography

Coppetts is the fifteenth largest of Barnet’s wards with an area of 2.7 square kilometres.

Population

With 15,902 residents in 2012, Coppetts ranks as the 17th largest ward in Barnet. In the next decade it is projected to drop slightly (by 2.9%) to 15,441 residents and will then be the smallest ward in Barnet.

(Source: Barnet Hybrid Solution updated for MYE Jan 2012 update)

Population Density: 63.4 per hectare Ward rank in Barnet: 7th most dense

No. of Households: 6948

(Source: Census 2011¹)

Age Profile

Coppetts ward’s age structure mirrors that of the borough as a whole in all age groups, but with slightly more residents in the 15-39 age group and slightly less in the 0-14 age group.

(Source: Barnet Hybrid Solution updated for MYE Jan 2012 update)

Figure 1. Age Profile

2012	0-14	15-39	40-59	60-79	80+
Coppetts	18%	42%	26%	11%	3%
BARNET	21%	35%	26%	14%	4%

¹ Census output is Crown copyright and is reproduced with the permission of the Controller of HMSO and the Queen's Printer for Scotland.

Ethnicity

Coppetts ward ethnicity profile mirrors that of Barnet as a whole in all groups.

(Source: Barnet Census Profiles 2001)

Religion

In terms of faith Coppetts has a higher proportion of Christians among its residents, 47% as against the borough average of 41%. It has a lower proportion of Jewish residents than Barnet as a whole (4% against 15%) and more residents stating they have no religion (23% against 16%).

Figure 2. Religion Profile

Ward/Area	Christian	Buddhist	Hindu	Jewish	Muslim	Sikh	Other Religion	No Religion	Religion not stated
BARNET	41%	1%	6%	15%	10%	0%	1%	16%	8%
Coppetts	47%	1%	6%	4%	9%	1%	1%	23%	8%

Languages

40% of school children in Coppetts do not speak English as a first language in the home, slightly below the Barnet average (44%). Gujarati, Persian-Farsi and Albanian-Shqip are the most common languages other than English spoken in the homes of Coppetts pupils attending Barnet schools (with 62, 54 and 53 pupils respectively).

(Source: PLASC January 2012: this data does not include pupils from Coppetts who attend private schools or schools outside Barnet.)

Deprivation

The 2010 Index of Deprivation shows Barnet as a whole to be the 176th most deprived local authority out of the 354 for England and Wales – slightly below the average. Barnet has become less deprived in relation to England over the last three years. None of the LSOA's² in Coppetts are within the 10% most income deprived nationally.

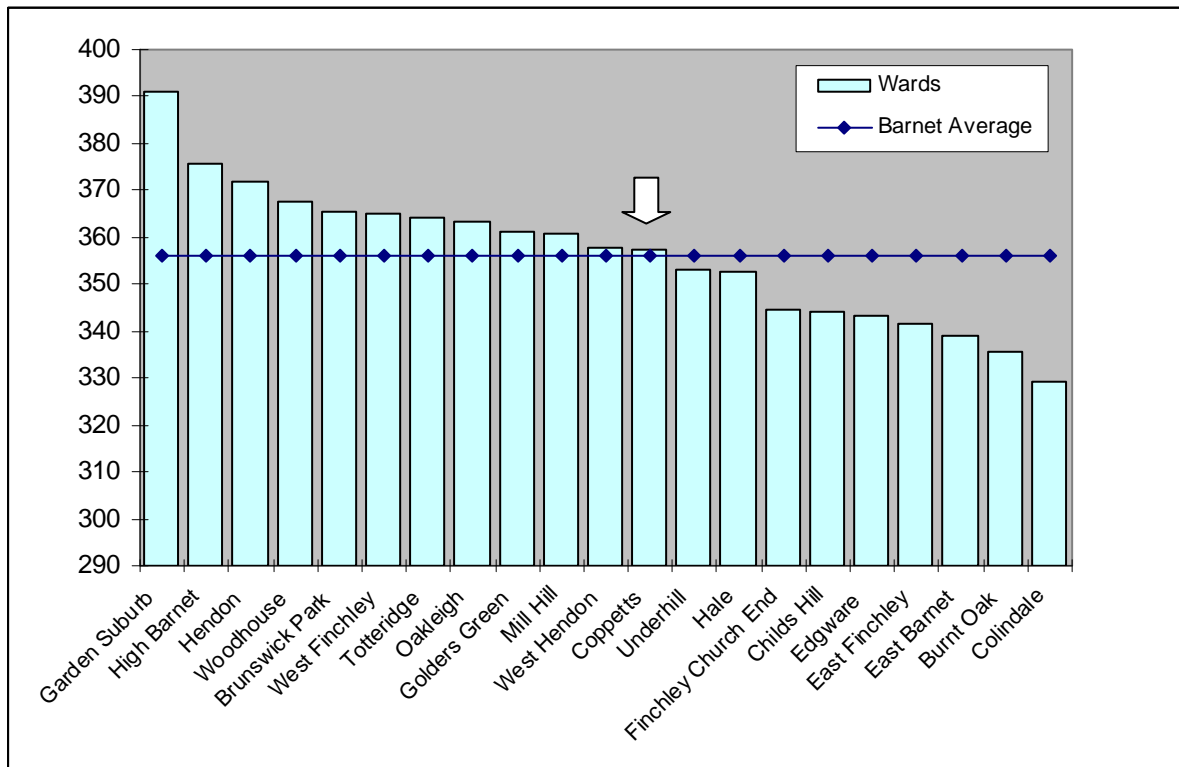
(Source: http://www.barnet.gov.uk/download/downloads/id/2348/deprivation_in_barnet_2012)

Education

The data for 2011/12 in the graph below shows the results for the 2,655 Barnet residents attending Barnet schools who took GCSEs. It shows pupils living in Coppetts had the twelfth highest GCSE equivalent point scores per pupil in the borough, just above the Barnet average. (Source: Performance & Data Management, Children's Service, LBB)

² Lower Super Output Areas (LSOAs) are standard statistical geographies developed by the Office for National Statistics, which contain around 1,500 people.

Figure 3. Average GCSE scores for 2011/12, by pupil's ward of residence



Income

Data from the company CACI shows Coppetts to have a median average household income of £33,626 – above the borough average which was £33,701, and the eleventh highest in the borough. (Source: CACI Paycheck data 2012)

Working Age Benefits

The Jobseeker's allowance (JSA) is payable to people under pensionable age who are available for, and actively seeking, work. The overall rate of claiming for Coppetts residents is higher than the borough level but lower than national levels. (Source: www.nomisweb.co.uk)

Figure 4. Total Jobseekers Allowance claimants (February 2013)

	Coppetts (numbers)	Coppetts (%)	Barnet (%)	Great Britain (%)
All people	385	3.2	2.8	3.9
Males	231	3.7	3.5	5.1
Females	154	2.7	2.2	2.7

Figure 5. DWP benefit claimants (August 2012)

	Coppetts (numbers)	Coppetts (%)	Barnet (%)	Great Britain (%)
All people	1,435	12.0	10.9	14.3
Job seekers	365	3.0	2.8	3.7
ESA and incapacity benefits	645	5.4	4.7	6.3
Lone parents	190	1.6	1.3	1.4
Carers	85	0.7	0.9	1.2
Others on income related benefits	40	0.3	0.3	0.4
Disabled	85	0.7	0.8	1.1
Bereaved	25	0.2	0.2	0.2
Key out-of-work benefits [†]	1,240	10.3	9.1	11.8

Health

Average life expectancy is a key summary indicator of health. For women and men, the Coppetts figure is lower than the average for Barnet, London & England.

(Source: ONS Life expectancy by ward 1999-2007)

Figure 6. Life Expectancy in Years

	Males	Females
Coppetts	76.0	80.6
Barnet	78.6	82.7
London	77.1	81.7
England	77.3	81.5

Crime

For all categories except 'Burglary' and 'Fraud or forgery', crime rates in the year to February 2013 in Barnet are low compared with London as a whole. In the case of Coppetts, it is either equal to or above the Barnet average in all categories, except for 'Sexual offences' and 'Other notifiable offences' where it is slightly below.

(Source: Metropolitan Police Service).

Note: a crime is categorised as a robbery where force is intimidated or used to steal property. Burglary is theft, or attempted theft, from a building where access is not authorised.

Mosaic

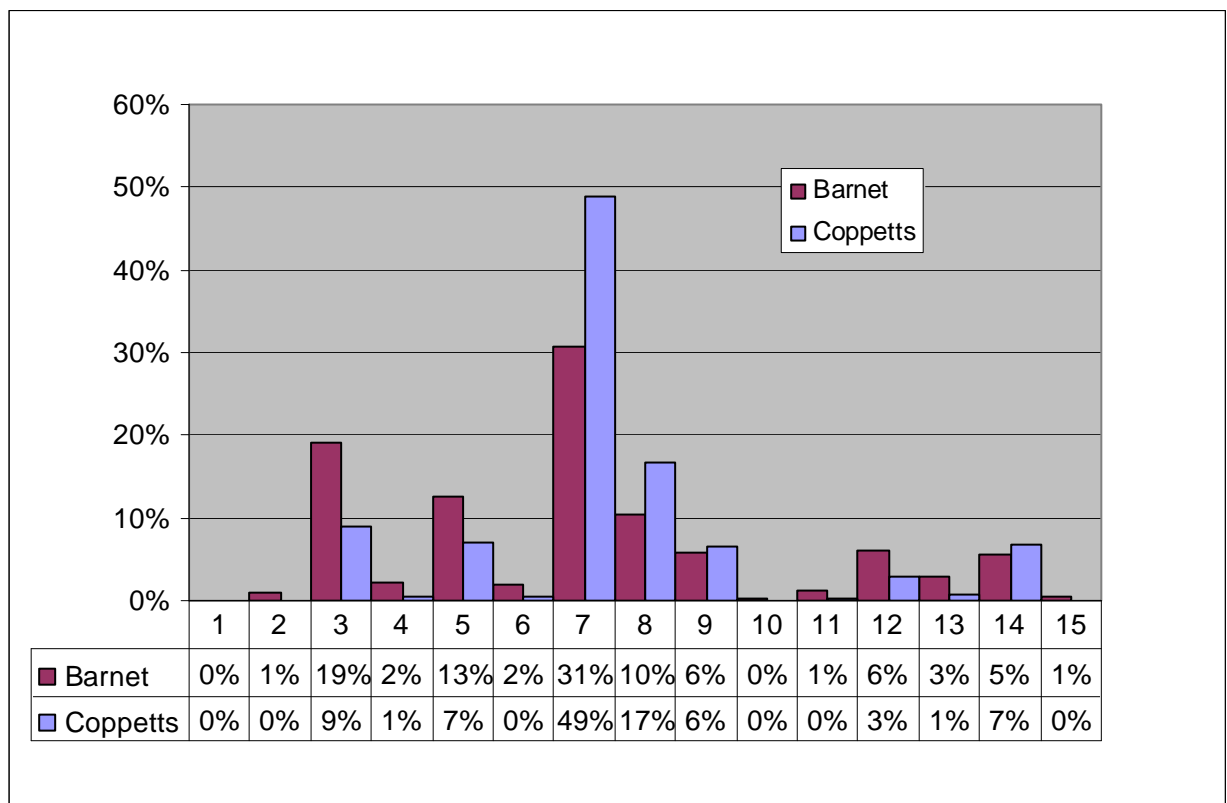
The council has bought the data used in this section from a commercial organisation, Experian. If the findings are used in other documents then this source must be acknowledged and copyright quoted in the following way: Mosaic data 2010 © Copyright 2004 Experian Ltd

- Experian’s Mosaic data brings together a large amount of data about areas and individual households from a variety of sources to classify all households according to 15 Groups and 67 Types. Experian does not claim one hundred percent accuracy for this product but it does use strong correlations to arrive at good predictions about the nature of each household in the borough. The classifications are highly detailed but summed up with a headline phrase.

Mosaic Groups

- Coppetts has a lower than average proportion of households in Group 3; these are Wealthy people living in the most sought after neighbourhoods.
- Coppetts has substantially more than the borough average of Group 7 (Barnet’s most popular group) which are Young educated city-dwellers.

Figure 7. Mosaic Groups in Coppetts



Group Code	Group Description
1	Residents of isolated rural communities
2	Residents of small and mid-sized towns with strong local roots
3	Wealthy people living in the most sought after neighbourhoods
4	Successful professionals living in suburban or semi-rural homes
5	Middle income families living in moderate suburban semis
6	Couples with young children in comfortable modern housing
7	Young, well-educated city dwellers
8	Couples and young singles in small modern starter homes

Group Code	Group Description
9	Lower income workers in urban terraces in often diverse areas
10	Owner occupiers in older-style housing in ex-industrial areas
11	Residents with sufficient incomes in right-to-buy social housing
12	Active elderly people living in pleasant retirement locations
13	Elderly people reliant on state support
14	Young people renting flats in high density social housing
15	Families in low-rise social housing with high levels of benefit need