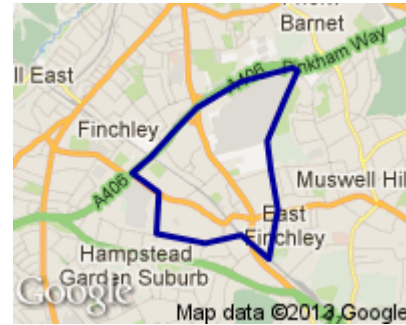


Profile of East Finchley Ward



Geography

East Finchley is the 19th largest of Barnet’s 21 wards with an area of 2.5 square kilometres.

Population

With 15,828 residents in 2012, East Finchley ranks as the 19th largest ward in Barnet. It is expected to decrease slightly in the next decade, by 1.5% to 14,589 residents and is expected to be 20th largest in Barnet.

(Source: Barnet Hybrid Solution updated for MYE Jan 2012 update)

Population Density: 63.4 per hectare Rank in Barnet: 8th most dense

No. of Households: 6643

(Source: Census 2011¹)

Age Profile

East Finchley ward’s age structure mirrors that of the borough as a whole in all age groups, except for slightly more residents in the 15-39 group and slightly less in the 40-59 age group.

(Source: Barnet Hybrid Solution updated for MYE Jan 2012 update)

Figure 1. Age Profile

2012	0-14	15-39	40-59	60-79	80+
East Finchley	16%	43%	23%	13%	4%
BARNET	21%	35%	26%	14%	4%

¹ Census output is Crown copyright and is reproduced with the permission of the Controller of HMSO and the Queen's Printer for Scotland.

Ethnicity

The ethnicity of the residents of East Finchley ward mirrors that of Barnet as a whole, with slightly more residents describing their ethnic origin as White Irish and slightly less describing their ethnic origin as Indian. (Source: Barnet Census Profiles 2001)

Religion

In terms of faith East Finchley has the highest proportion of residents in Barnet stating they have no religion (27% against borough average of 13%). There are slightly fewer Jewish residents (9% compared to the borough average of 15%), and slightly fewer Muslim residents, 7% against average of 10%. (Source: Census 2011)

Figure 2. Religion Profile

Ward/Area	Christian	Buddhist	Hindu	Jewish	Muslim	Sikh	Other Religion	No Religion	Religion not stated
BARNET	41%	1%	6%	15%	10%	0%	1%	16%	8%
East Finchley	41%	1%	4%	9%	7%	0%	1%	27%	9%

Languages

43% of school children in East Finchley do not speak English as a first language in the home. This is in line with the Barnet average (44%). Somali, Arabic and Gujarati are the most common languages other than English spoken in the homes of East Finchley pupils attending Barnet schools (with 83, 43 and 40 pupils respectively).

(Source: PLASC January 2012: this data does not include pupils from East Finchley who attend private schools or schools outside Barnet.)

Deprivation

The 2010 Index of Deprivation shows Barnet as a whole to be the 176th most deprived local authority out of the 354 for England and Wales – slightly below the average. Barnet has become less deprived in relation to England over the last three years. The most deprived LSOA² in Barnet is located in East Finchley, specifically the Strawberry Vale estate, and falls within the 11% most deprived LSOAs in the country.

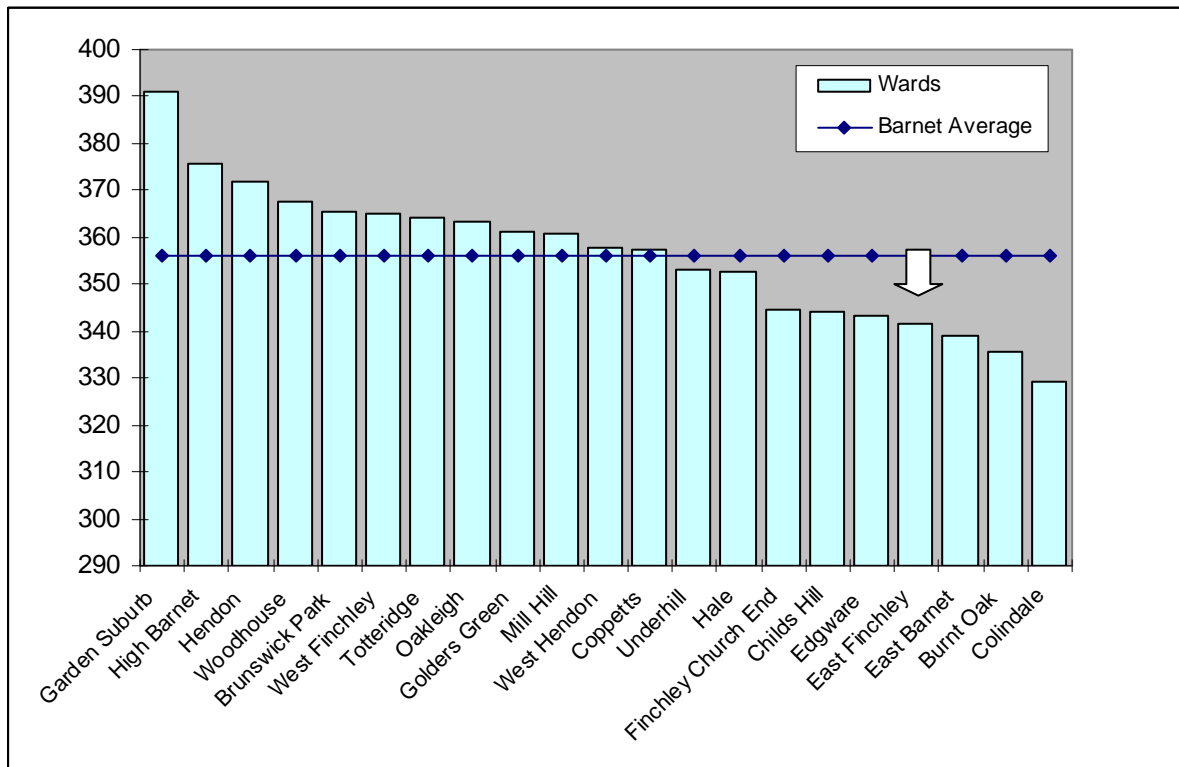
(Source: [http://www.barnet.gov.uk/download/downloads/id/2348/deprivation in barnet 2012](http://www.barnet.gov.uk/download/downloads/id/2348/deprivation%20in%20barnet%202012))

Education

The data for 2011/12 in the graph below shows the results for the 2,655 Barnet residents attending Barnet schools who took GCSEs. It shows pupils living in East Finchley had the eighteenth highest GCSE equivalent point scores per pupil in the borough, below the Barnet average. (Source: Performance & Data Management, Children's Service, LBB)

² Lower Super Output Areas (LSOAs) are standard statistical geographies developed by the Office for National Statistics, which contain around 1,500 people.

Figure 4. Average GCSE scores for 2011/12, by pupil's ward of residence



Income

Data from the company CACI shows East Finchley to have a median average household income of £34,276 – above the borough average which was £33,701, and the eighth highest in the borough. (Source: CACI Paycheck data 2012)

Working Age Benefits

The Jobseeker's allowance (JSA) is payable to people under pensionable age who are available for, and actively seeking, work. The overall rate of claiming for East Finchley residents is higher than the borough level but lower than national levels. (Source: www.nomisweb.co.uk)

Figure 4. Total Jobseekers Allowance claimants (February 2013)

	East Finchley (numbers)	East Finchley (%)	Barnet (%)	Great Britain (%)
All people	333	3.3	2.8	3.9
Males	188	4.1	3.5	5.1
Females	145	2.7	2.2	2.7

Figure 6. DWP benefit claimants (August 2012)

	East Finchley (numbers)	East Finchley (%)	Barnet (%)	Great Britain (%)
Total claimants	1,195	12.0	10.9	14.3
Job seekers	300	3.0	2.8	3.7
ESA and incapacity benefits	545	5.5	4.7	6.3
Lone parents	130	1.3	1.3	1.4
Carers	85	0.9	0.9	1.2
Others on income related benefits	30	0.3	0.3	0.4
Disabled	90	0.9	0.8	1.1
Bereaved	15	0.2	0.2	0.2
Key out-of-work benefits [†]	1,005	10.1	9.1	11.8

Health

Average life expectancy is a key summary indicator of health. For men, the East Finchley figure is lower than the Barnet average, equal to the London average and slightly below the England average. For women it is equal to the Barnet average, and higher than the London & England average.

(Source: ONS Life expectancy by ward 1999-2007)

Figure 5. Life Expectancy in Years

	Males	Females
East Finchley	77.1	82.7
Barnet	78.6	82.7
London	77.1	81.7
England	77.3	81.5

Crime

For all categories except 'Burglary' and 'Fraud or forgery', crime rates in the year to February 2013 in Barnet are low compared with London as a whole. In the case of East Finchley, it is either equal to, or in more cases, below the Barnet average in all categories, except for 'Criminal Damage', 'Robbery' and 'Other notifiable offences' where it is slightly above.

(Source: Metropolitan Police Service).

Note: a crime is categorised as a robbery where force is intimated or used to steal property. Burglary is theft, or attempted theft, from a building where access is not authorised.

Mosaic

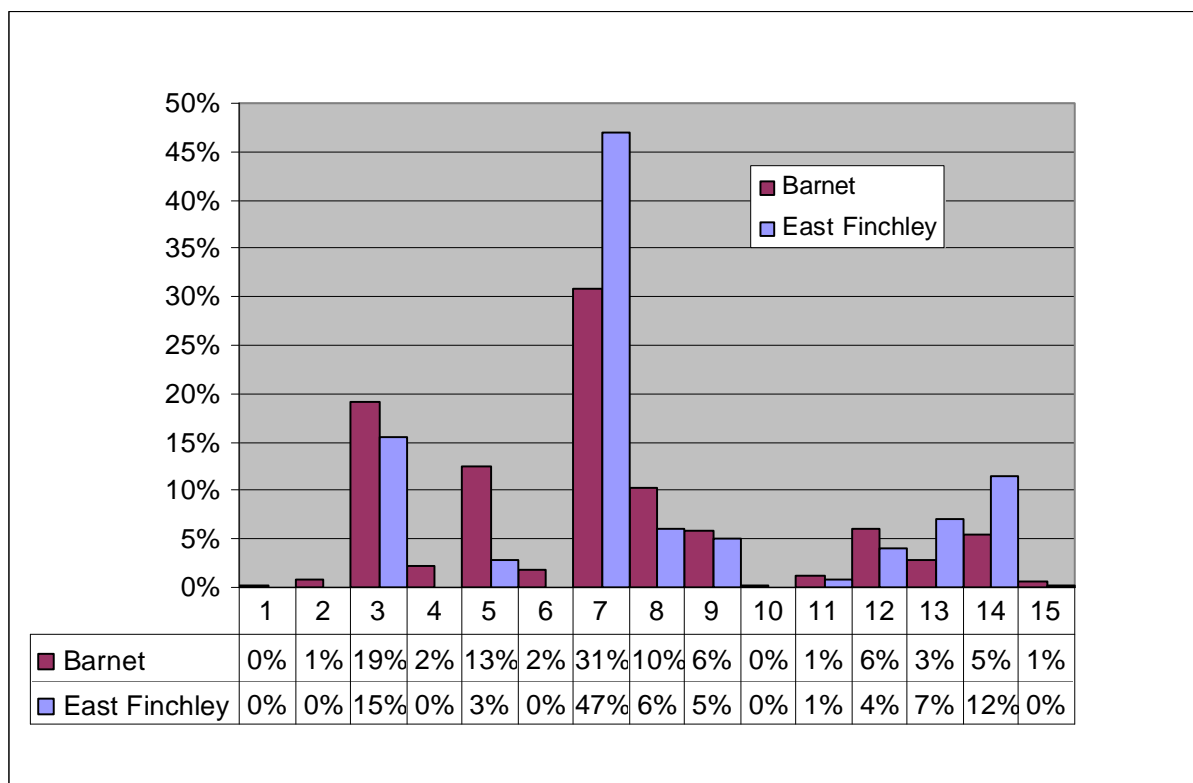
The council has bought the data used in this section from a commercial organisation, Experian. If the findings are used in other documents then this source must be acknowledged and copyright quoted in the following way: Mosaic data 2010 © Copyright 2004 Experian Ltd

- Experian’s Mosaic data brings together a large amount of data about areas and individual households from a variety of sources to classify all households according to 15 Groups and 67 Types. Experian does not claim one hundred percent accuracy for this product but it does use strong correlations to arrive at good predictions about the nature of each household in the borough. The classifications are highly detailed but summed up with a headline phrase.

Mosaic Groups

- East Finchley has above the borough average of Group 7 residents (Barnet’s most popular group) which are Young educated city-dwellers, and also of Group 14; Young people renting flats in high density social housing.
- East Finchley has significantly less than the borough average of Group 5: Middle income families living in moderate suburban semis

Figure 7. Mosaic Groups in East Finchley



Group Code	Group Description
1	Residents of isolated rural communities
2	Residents of small and mid-sized towns with strong local roots
3	Wealthy people living in the most sought after neighbourhoods
4	Successful professionals living in suburban or semi-rural homes
5	Middle income families living in moderate suburban semis
6	Couples with young children in comfortable modern housing
7	Young, well-educated city dwellers
8	Couples and young singles in small modern starter homes

Group Code	Group Description
9	Lower income workers in urban terraces in often diverse areas
10	Owner occupiers in older-style housing in ex-industrial areas
11	Residents with sufficient incomes in right-to-buy social housing
12	Active elderly people living in pleasant retirement locations
13	Elderly people reliant on state support
14	Young people renting flats in high density social housing
15	Families in low-rise social housing with high levels of benefit need