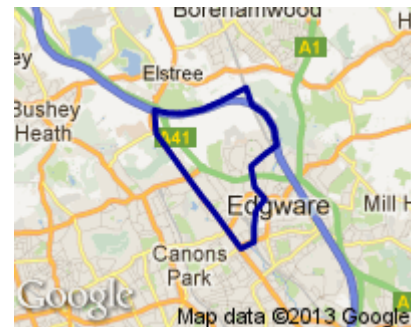


Profile of Edgware Ward



Geography

Edgware is the 4th largest of Barnet’s wards with an area of 5.5 square kilometres.

Population

With 16,602 residents in 2012, Edgware ranks as the 11th largest ward in Barnet. It is expected to increase slightly by 1.5% in the next decade, to 16,416 residents and is expected to be move down 2 places to 13th largest.

(Source: Barnet Hybrid Solution updated for MYE Jan 2012 update)

Population Density: 30.1 per hectare Ward Rank in Barnet: 18th most dense

No. of Households: 5981

(Source: Census 2011¹)

Age Profile

Edgware ward’s age structure mirrors that of the borough as a whole in all age groups.

(Source: Barnet Hybrid Solution updated for MYE Jan 2012 update)

Figure 1. Age Profile

2012	0-14	15-39	40-59	60-79	80+
Edgware	22%	34%	27%	14%	3%
BARNET	21%	35%	26%	14%	4%

¹ Census output is Crown copyright and is reproduced with the permission of the Controller of HMSO and the Queen's Printer for Scotland.

Ethnicity

64% of Edgware residents describe their ethnic origin as White British; the seventh highest proportion in Barnet and slightly higher than the Barnet average of 60%. The ward is fairly represented in all other groups apart from residents who describe their ethnic origin as White Irish, which is slightly lower than the Barnet average, and those who describe their origin as Indian, which is slightly higher than Barnet. (Source: *Barnet Census Profiles 2001*)

Religion

In terms of faith Edgware has the third lowest number of Christians and third highest proportion of Jewish residents, compared to Barnet as a whole (28% against 41%, and 33% against 15% respectively). Edgware has the lowest proportion of residents stating they have no religion in Barnet. (Source: *Census 2011*)

Figure 2. Religion Profile

Ward/Area	Christian	Buddhist	Hindu	Jewish	Muslim	Sikh	Other Religion	No Religion	Religion not stated
BARNET	41%	1%	6%	15%	10%	0%	1%	16%	8%
Edgware	28%	1%	9%	33%	11%	0%	2%	8%	8%

Languages

39% of school children in Edgware do not speak English as a first language in the home. This is slightly lower than the Barnet average (44%). Persian-Farsi, Somali and Romanian are the most common languages other than English spoken in the homes of Edgware pupils attending Barnet schools (with 65, 62 and 51 pupils respectively).

(Source: *PLASC January 2012: this data does not include pupils from Edgware who attend private schools or schools outside Barnet.*)

Deprivation

The 2010 Index of Deprivation shows Barnet as a whole to be the 176th most deprived local authority out of the 354 for England and Wales – slightly below the average. Barnet has become less deprived in relation to England over the last three years. One of the LSOA's² in Edgware is within the 10% most income deprived nationally.

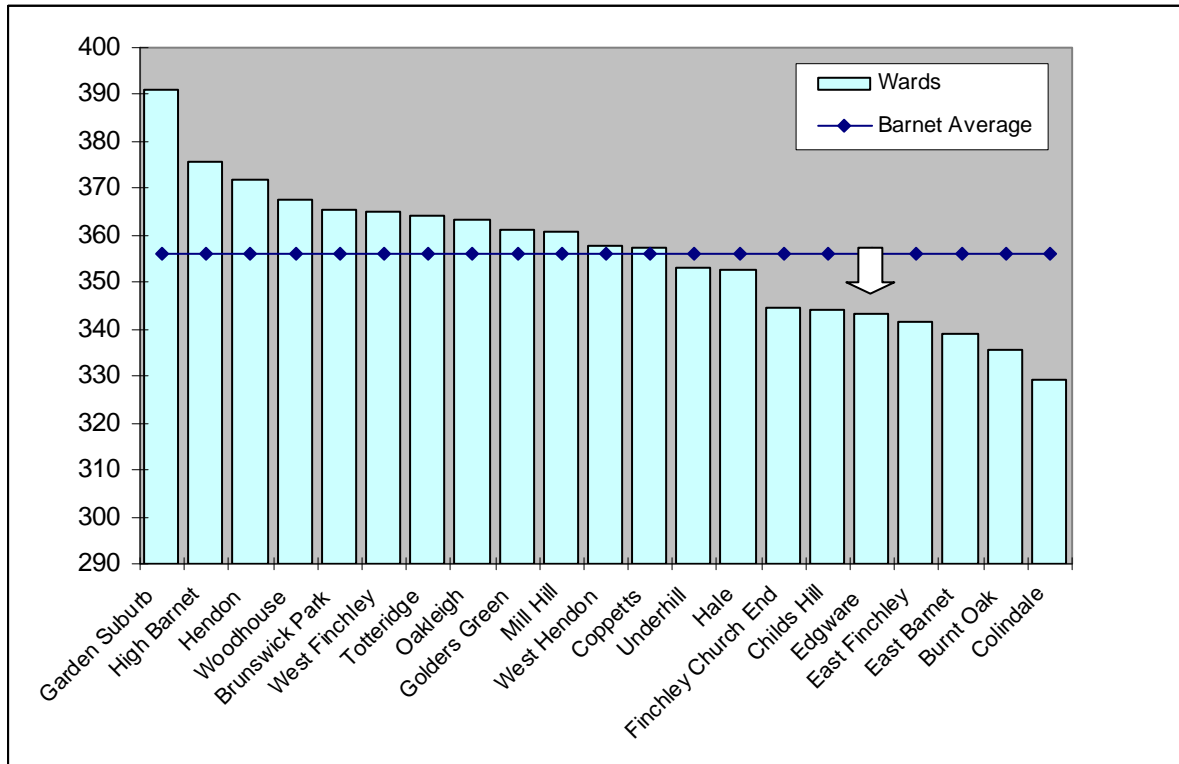
(Source: http://www.barnet.gov.uk/download/downloads/id/2348/deprivation_in_barnet_2012)

Education

The data for 2011/12 in the graph below shows the results for the 2,655 Barnet residents attending Barnet schools who took GCSEs. It shows pupils living in Edgware had the seventeenth highest GCSE equivalent point scores per pupil in the borough, below the Barnet average. (Source: *Performance & Data Management, Children's Service, LBB*)

² Lower Super Output Areas (LSOAs) are standard statistical geographies developed by the Office for National Statistics, which contain around 1,500 people.

Figure 3. Average GCSE scores for 2011/12, by pupil's ward of residence



Income

Data from the company CACI shows Edgware to have a median average household income of £34,227 – above the borough average which was £33,701, and the ninth highest in the borough. (Source: CACI Paycheck data 2012)

Working Age Benefits

The Jobseeker's allowance (JSA) is payable to people under pensionable age who are available for, and actively seeking, work. The overall rate of claiming for Edgware residents is lower than the borough level but lower than national levels. (Source: www.nomisweb.co.uk)

Figure 4. Total Jobseekers Allowance claimants (February 2013)

	Edgware (numbers)	Edgware (%)	Barnet (%)	Great Britain (%)
All people	265	2.6	2.8	3.9
Males	162	3.1	3.5	5.1
Females	103	2.0	2.2	2.7

Figure 5. DWP benefit claimants (August 2012)

	Edgware (numbers)	Edgware (%)	Barnet (%)	Great Britain (%)
All people	1,240	12.0	10.9	14.3
Job seekers	305	2.9	2.8	3.7
ESA and incapacity benefits	510	4.9	4.7	6.3
Lone parents	140	1.4	1.3	1.4
Carers	110	1.1	0.9	1.2
Others on income related benefits	30	0.3	0.3	0.4
Disabled	120	1.2	0.8	1.1
Bereaved	25	0.2	0.2	0.2
Key out-of-work benefits [†]	985	9.5	9.1	11.8

Health

Average life expectancy is a key summary indicator of health. For both men and women, the Edgware figure is higher than the average for Barnet and national levels.

(Source: ONS Life expectancy by ward 1999-2007)

Figure 6. Life Expectancy in Years

	Males	Females
Edgware	79.6	83.3
Barnet	78.6	82.7
London	77.1	81.7
England	77.3	81.5

Crime

For all categories except 'Burglary' and 'Fraud or forgery', crime rates in the year to February 2013 in Barnet are low compared with London as a whole. In the case of Edgware, it is above the Barnet average in all categories, except for 'Burglary' and 'Drugs offences'.

(Source: Metropolitan Police Service).

Note: a crime is categorised as a robbery where force is intimidated or used to steal property. Burglary is theft, or attempted theft, from a building where access is not authorised.

Mosaic

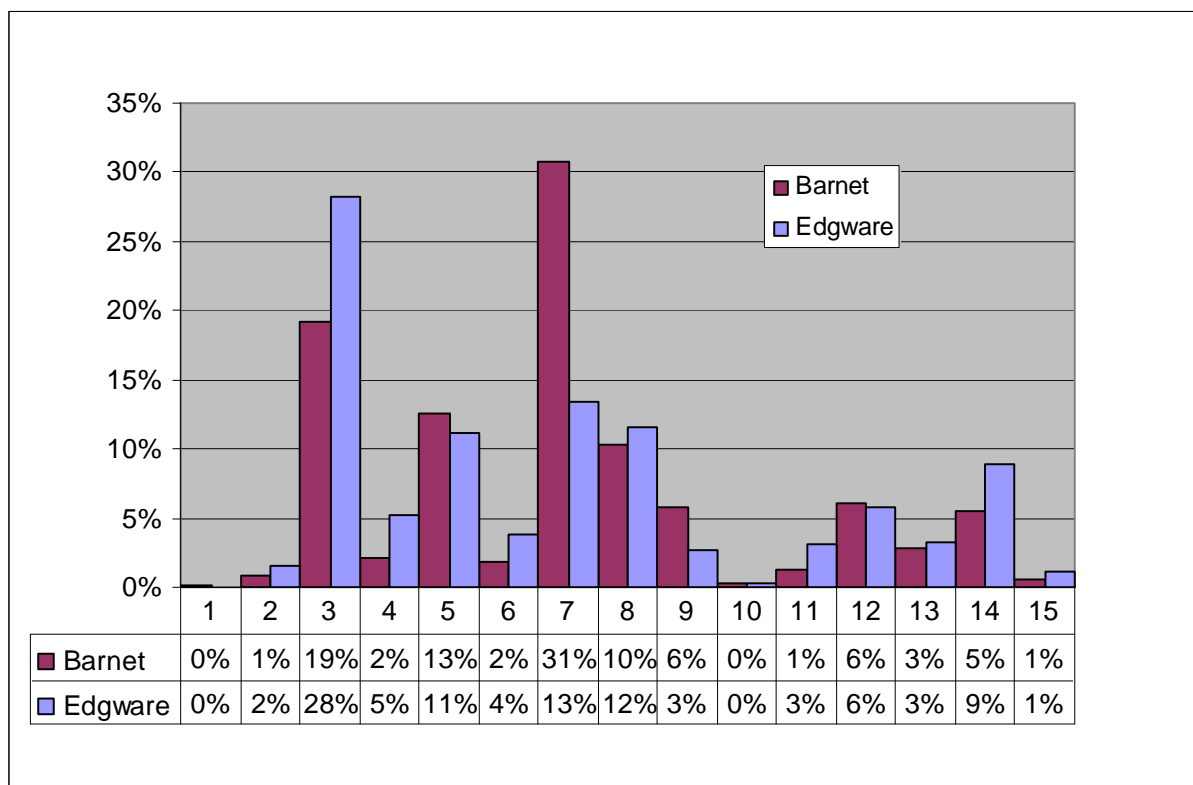
The council has bought the data used in this section from a commercial organisation, Experian. If the findings are used in other documents then this source must be acknowledged and copyright quoted in the following way: Mosaic data 2010 © Copyright 2004 Experian Ltd

- Experian’s Mosaic data brings together a large amount of data about areas and individual households from a variety of sources to classify all households according to 15 Groups and 67 Types. Experian does not claim one hundred percent accuracy for this product but it does use strong correlations to arrive at good predictions about the nature of each household in the borough. The classifications are highly detailed but summed up with a headline phrase.

Mosaic Groups

- Edgware has a substantially higher than average proportion of households in Group 3; these are Wealthy people living in the most sought after neighbourhoods
- Edgware has substantially less than the borough average of Group 7 (Barnet’s most popular group) which are Young educated city-dwellers.

Figure 7. Mosaic Groups in Edgware



Group Code	Group Description
1	Residents of isolated rural communities
2	Residents of small and mid-sized towns with strong local roots
3	Wealthy people living in the most sought after neighbourhoods
4	Successful professionals living in suburban or semi-rural homes
5	Middle income families living in moderate suburban semis
6	Couples with young children in comfortable modern housing
7	Young, well-educated city dwellers
8	Couples and young singles in small modern starter homes

Group Code	Group Description
9	Lower income workers in urban terraces in often diverse areas
10	Owner occupiers in older-style housing in ex-industrial areas
11	Residents with sufficient incomes in right-to-buy social housing
12	Active elderly people living in pleasant retirement locations
13	Elderly people reliant on state support
14	Young people renting flats in high density social housing
15	Families in low-rise social housing with high levels of benefit need