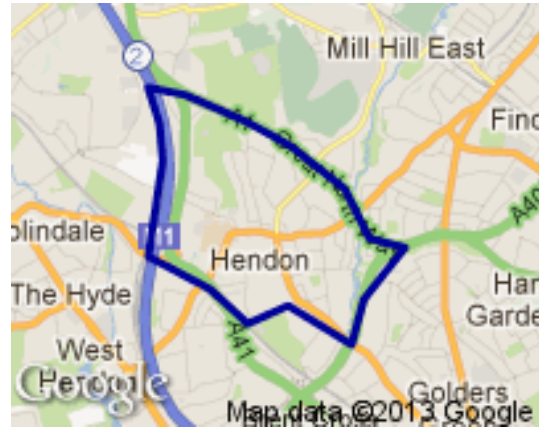


## Profile of Hendon Ward



### Geography

Hendon is the 14th largest of Barnet’s wards with an area of 2.8 square kilometres.

### Population

In 2012 Hendon is the 10<sup>th</sup> most popular ward in Barnet with 16,854 residents. Over the next decade it is projected to decrease by 3% down to 16,345 and down to 14<sup>th</sup> largest, taken over by Edgware, Hale and East Barnet.

*(Source: Barnet Hybrid Solution updated for MYE Jan 2012 update)*

Population Density: 65 per hectare      Ward Rank in Barnet: 5<sup>th</sup> most dense

No. of Households: 6965

*(Source: Census 2011<sup>1</sup>)*

### Age Profile

Hendon ward’s age structure mirrors that of the borough as a whole in most age groups, but has more people in the 15-39 age group and less in the 40-59 group.

*(Source: Barnet Hybrid Solution updated for MYE Jan 2012 update)*

**Figure 1. Age Profile**

2012	0-14	15-39	40-59	60-79	80+
<b>Hendon</b>	22%	42%	20%	12%	5%
<b>BARNET</b>	21%	35%	26%	14%	4%

<sup>1</sup> Census output is Crown copyright and is reproduced with the permission of the Controller of HMSO and the Queen's Printer for Scotland.

## Ethnicity

56% of Hendon residents describe their ethnic origin as White British, only slightly lower than the Barnet average of 60%. The ward is equally represented in all other groups against the Barnet average. (Source: Barnet Census Profiles 2001)

## Religion

In terms of faith Hendon has a higher than average proportion of Jewish residents, 31% as against the borough average of 15%, and joint fourth highest (with Finchley Church End) in Barnet. Hendon has a lower than average number of Christians, 32% against the Barnet average of 41%. (Source: Census 2011)

**Figure 2. Religion Profile**

Ward/Area	Christian	Buddhist	Hindu	Jewish	Muslim	Sikh	Other Religion	No Religion	Religion not stated
<b>BARNET</b>	41%	1%	6%	15%	10%	0%	1%	16%	8%
<b>Hendon</b>	32%	1%	6%	31%	9%	0%	1%	11%	9%

## Languages

46% of school children in Hendon do not speak English as a first language in the home. This is in line with the Barnet average (44%). Polish, Hebrew and Arabic are the most common languages other than English spoken in the homes of Hendon pupils attending Barnet schools (with 147, 60 and 41 pupils respectively).

(Source: PLASC January 2012: this data does not include pupils from Hendon who attend private schools or schools outside Barnet.)

## Deprivation

The 2010 Index of Deprivation shows Barnet as a whole to be the 176<sup>th</sup> most deprived local authority out of the 354 for England and Wales – slightly below the average. Barnet has become less deprived in relation to England over the last three years. None of the LSOA's<sup>2</sup> in Hendon are within the 10% most income deprived nationally.

(Source: [http://www.barnet.gov.uk/download/downloads/id/2348/deprivation\\_in\\_barnet\\_2012](http://www.barnet.gov.uk/download/downloads/id/2348/deprivation_in_barnet_2012))

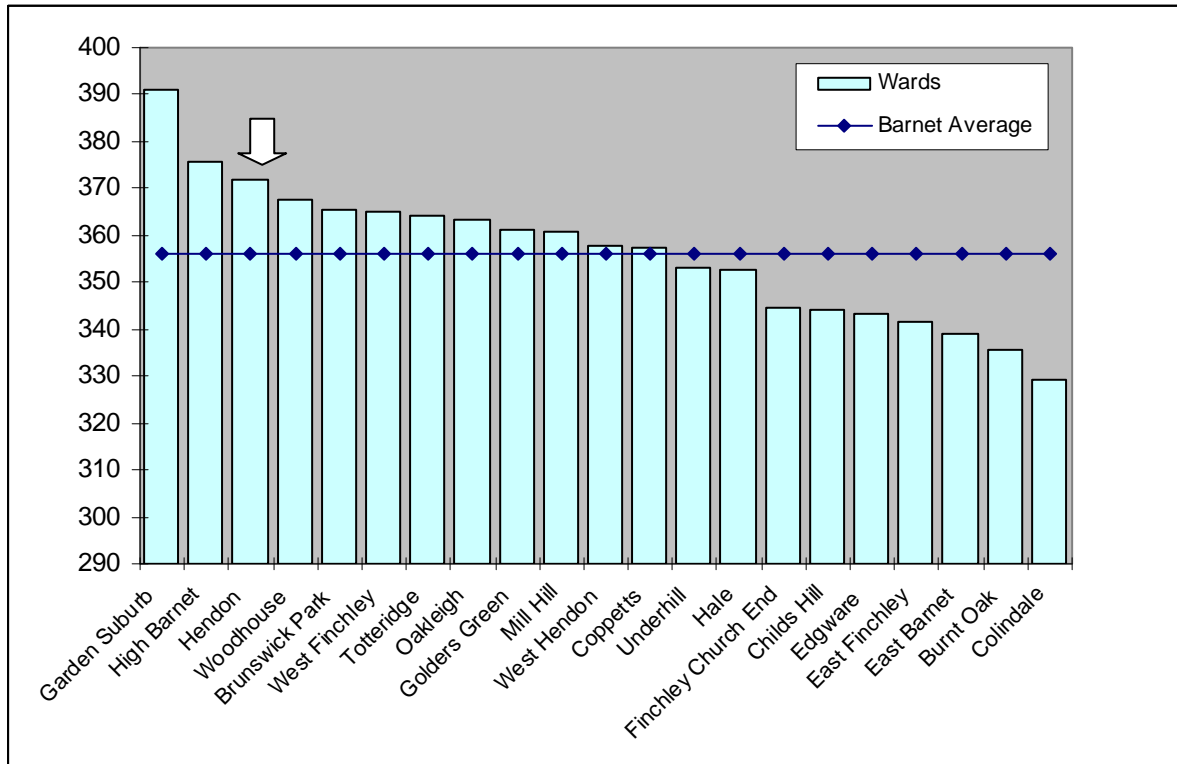
## Education

The data for 2011/12 in the graph below shows the results for the 2,655 Barnet residents attending Barnet schools who took GCSEs. It shows pupils living in Hendon had the third highest GCSE equivalent point scores per pupil in the borough, higher than the Barnet average. (Source: Performance & Data Management, Children's Service, LBB)

---

<sup>2</sup> Lower Super Output Areas (LSOAs) are standard statistical geographies developed by the Office for National Statistics, which contain around 1,500 people.

**Figure 3. Average GCSE scores for 2011/12, by pupil's ward of residence**



### Income

Data from the company CACI shows Hendon to have a median average household income of £32,571 – below the borough average which was £33,701, and the fifteenth highest in the borough. (Source: CACI Paycheck data 2012)

In May 2012 there were 2,320 Hendon residents receiving a state pension, which is significantly lower than the borough average of 2,434 per ward. (Source: DWP Information Directorate)

### Working Age Benefits

The Jobseeker's allowance (JSA) is payable to people under pensionable age who are available for, and actively seeking, work. The overall rate of claiming for Hendon residents is lower than both the borough and national levels. (Source: [www.nomisweb.co.uk](http://www.nomisweb.co.uk))

**Figure 4. Total Jobseekers Allowance claimants (January 2013)**

	Hendon (numbers)	Hendon (%)	Barnet (%)	Great Britain (%)
All people	307	2.6	2.8	3.8
Males	182	3.1	3.4	5.0
Females	125	2.1	2.2	2.6

**Figure 5. DWP benefit claimants (May 2012)**

	<b>Hendon (numbers)</b>	<b>Hendon (%)</b>	<b>Barnet (%)</b>	<b>Great Britain (%)</b>
Total claimants	1,175	10.0	11.0	14.4
Job seekers	310	2.6	2.8	3.7
ESA and incapacity benefits	540	4.6	4.7	6.3
Lone parents	105	0.9	1.4	1.5
Carers	90	0.8	0.9	1.2
Others on income related benefits	30	0.3	0.3	0.4
Disabled	80	0.7	0.8	1.1
Bereaved	20	0.2	0.2	0.2
Total claimants	1,175	10.0	11.0	14.4

## Health

Average life expectancy is a key summary indicator of health. For both men and women, the Hendon figure is higher than the Barnet, London and England average.

*(Source: ONS Life expectancy by ward 1999-2007)*

**Figure 6. Life Expectancy in Years**

	<b>Males</b>	<b>Females</b>
Hendon	79.2	84.0
Barnet	78.6	82.7
London	77.1	81.7
England	77.3	81.5

## Crime

For all categories except 'Burglary' and 'Fraud or forgery', crime rates in the year to February 2013 in Barnet are low compared with London as a whole. In the case of Hendon, it is higher than the Barnet average in all categories, except for 'Other notifiable Offences'.

*(Source: Metropolitan Police Service).*

Note: a crime is categorised as a robbery where force is intimidated or used to steal property. Burglary is theft, or attempted theft, from a building where access is not authorised.

## Mosaic

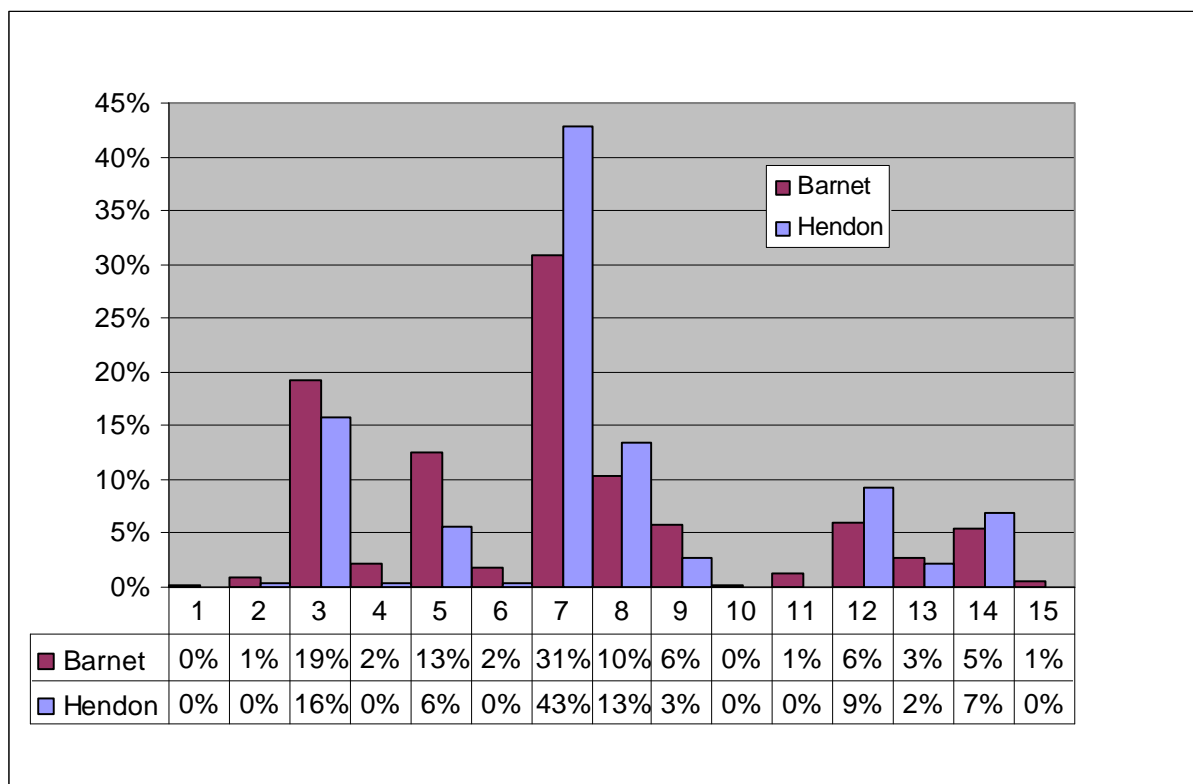
The council has bought the data used in this section from a commercial organisation, Experian. If the findings are used in other documents then this source must be acknowledged and copyright quoted in the following way: Mosaic data 2010 © Copyright 2004 Experian Ltd

- Experian’s Mosaic data brings together a large amount of data about areas and individual households from a variety of sources to classify all households according to 15 Groups and 67 Types. Experian does not claim one hundred percent accuracy for this product but it does use strong correlations to arrive at good predictions about the nature of each household in the borough. The classifications are highly detailed but summed up with a headline phrase.

## Mosaic Groups

- Hendon has more than the borough average of Group 7 (Barnet’s most popular group) which are Young educated city-dwellers.
- Hendon Mosaic profile for other groups roughly reflects the borough average.

**Figure 7. Mosaic Groups in Hendon**



Group Code	Group Description
<b>1</b>	Residents of isolated rural communities
<b>2</b>	Residents of small and mid-sized towns with strong local roots
<b>3</b>	Wealthy people living in the most sought after neighbourhoods
<b>4</b>	Successful professionals living in suburban or semi-rural homes
<b>5</b>	Middle income families living in moderate suburban semis
<b>6</b>	Couples with young children in comfortable modern housing
<b>7</b>	Young, well-educated city dwellers
<b>8</b>	Couples and young singles in small modern starter homes

Group Code	Group Description
<b>9</b>	Lower income workers in urban terraces in often diverse areas
<b>10</b>	Owner occupiers in older-style housing in ex-industrial areas
<b>11</b>	Residents with sufficient incomes in right-to-buy social housing
<b>12</b>	Active elderly people living in pleasant retirement locations
<b>13</b>	Elderly people reliant on state support
<b>14</b>	Young people renting flats in high density social housing
<b>15</b>	Families in low-rise social housing with high levels of benefit need