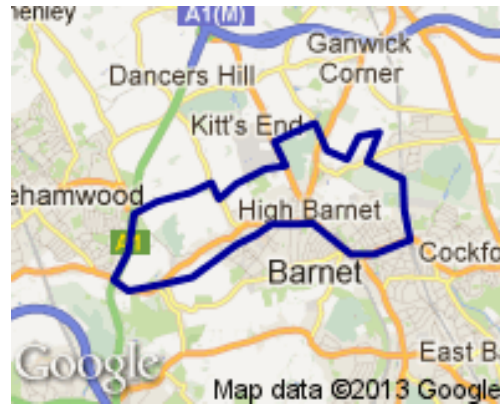


Profile of High Barnet Ward



Geography

High Barnet is the third largest of Barnet’s wards with an area of 8.3 square kilometres.

Population

In 2012 High Barnet has 15,646 residents and is the 20th largest ward in Barnet. By 2012 it is expected to have grown very slightly, to 15,768 residents and will become 18th largest.
(Source: Barnet Hybrid Solution updated for MYE Jan 2012 update)

Population Density: 18.4 per hectare Ward Rank in Barnet: 20th (2nd lowest)

No. of Households: 6536

(Source: Census 2011¹)

Age Profile

High Barnet ward’s age structure mirrors that of the borough as a whole in all age groups.
(Source: Barnet Hybrid Solution updated for MYE Jan 2012 update)

Figure 1. Age Profile

2012	0-14	15-39	40-59	60-79	80+
High Barnet	18%	33%	30%	14%	4%
BARNET	21%	35%	26%	14%	4%

¹ Census output is Crown copyright and is reproduced with the permission of the Controller of HMSO and the Queen's Printer for Scotland.

Ethnicity

80% of High Barnet residents describe their ethnic origin as White British; the highest proportion in Barnet and higher than the Barnet average of 60%. The ward is under represented in all other groups especially residents who describe their ethnic origin as Indian and Black African. (Source: Barnet Census Profiles 2001)

Religion

In terms of faith High Barnet has the third highest proportion of Christians among its residents, 53% as against the borough average of 41%. It also has the lowest proportion of Muslim residents in Barnet (24% against the average of 10%) and second lowest proportion of Hindu residents (3% against average of 6%). (Source: Census 2011)

Figure 2. Religion Profile

Ward/Area	Christian	Buddhist	Hindu	Jewish	Muslim	Sikh	Other Religion	No Religion	Religion not stated
BARNET	41%	1%	6%	15%	10%	0%	1%	16%	8%
High Barnet	53%	1%	3%	6%	4%	0%	1%	23%	8%

Languages

20% of school children in High Barnet do not speak English as a first language in the home. This is significantly lower than the Barnet average (44%). Persian-Farsi and French are the most common languages other than English spoken in the homes of High Barnet pupils attending Barnet schools (with 24 and 20 pupils respectively).

(Source: PLASC January 2012: this data does not include pupils from High Barnet who attend private schools or schools outside Barnet.)

Deprivation

The 2010 Index of Deprivation shows Barnet as a whole to be the 176th most deprived local authority out of the 354 for England and Wales – slightly below the average. Barnet has become less deprived in relation to England over the last three years. None of the LSOA's² in High Barnet are within the 10% most income deprived nationally.

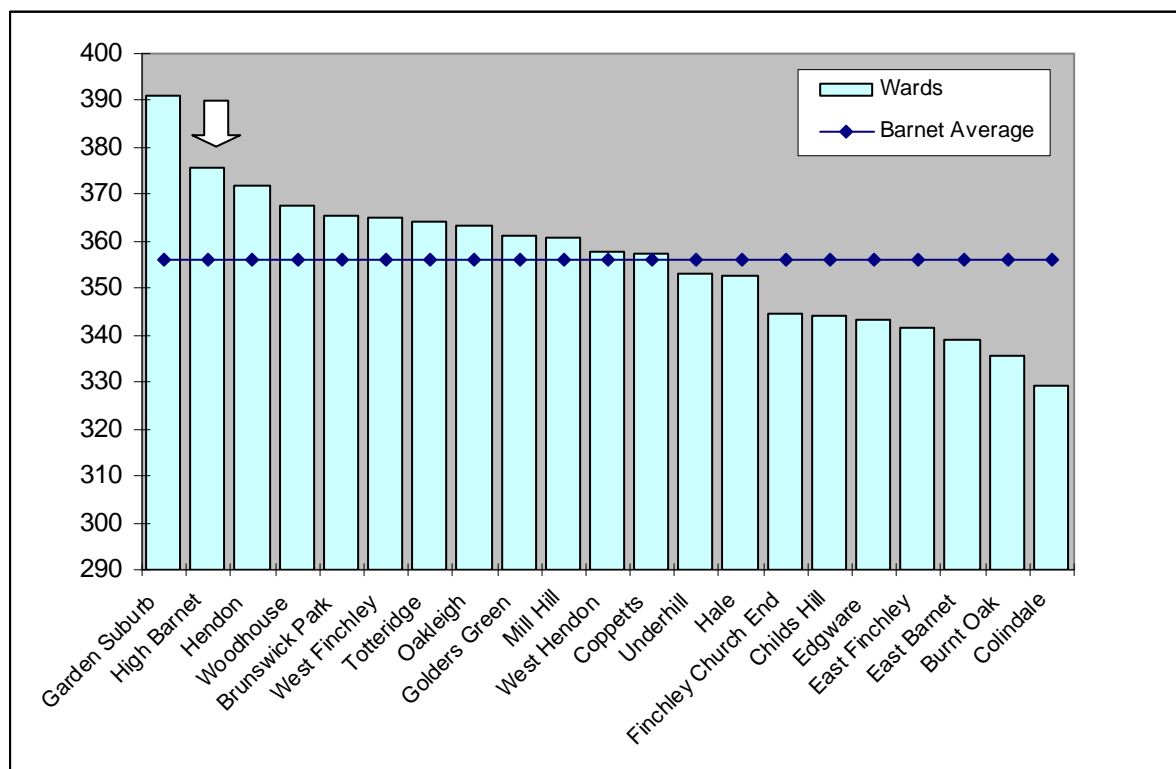
(Source: [http://www.barnet.gov.uk/download/downloads/id/2348/deprivation in barnet 2012](http://www.barnet.gov.uk/download/downloads/id/2348/deprivation%20in%20barnet%202012))

Education

The data for 2011/12 in the graph below shows the results for the 2,655 Barnet residents attending Barnet schools who took GCSEs. It shows pupils living in High Barnet had the second highest GCSE equivalent point scores per pupil in the borough, just below the Barnet average. (Source: Performance & Data Management, Children's Service, LBB)

² Lower Super Output Areas (LSOAs) are standard statistical geographies developed by the Office for National Statistics, which contain around 1,500 people.

Figure 3. Average GCSE scores for 2011/12, by pupil's ward of residence



Income

Data from the company CACI shows High Barnet to have a median average household income of £37,919 – above the borough average which was £33,701, and the third highest in the borough. (Source: CACI Paycheck data 2012)

In May 2012 there were 2,750 High Barnet residents receiving a state pension, which is higher than the borough average of 2,434 per ward.

(Source: DWP Information Directorate)

Working Age Benefits

The Jobseeker's allowance (JSA) is payable to people under pensionable age who are available for, and actively seeking, work. The overall rate of claiming for High Barnet residents is lower than the borough and national levels. (Source: www.nomisweb.co.uk)

Figure 4. Total Jobseekers Allowance claimants (February 2013)

	High Barnet (numbers)	High Barnet (%)	Barnet (%)	Great Britain (%)
All people	217	2.2	2.8	3.9
Males	133	2.6	3.5	5.1
Females	84	1.7	2.2	2.7

Figure 5. DWP benefit claimants (August 2012)

	High Barnet (numbers)	High Barnet (%)	Barnet (%)	Great Britain (%)
All people	880	8.8	10.9	14.3
Job seekers	220	2.2	2.8	3.7
ESA and incapacity benefits	415	4.1	4.7	6.3
Lone parents	75	0.7	1.3	1.4
Carers	60	0.6	0.9	1.2
Others on income related benefits	25	0.2	0.3	0.4
Disabled	65	0.6	0.8	1.1
Bereaved	20	0.2	0.2	0.2
Key out-of-work benefits [†]	735	7.3	9.1	11.8

Health

Average life expectancy is a key summary indicator of health. For both men the High Barnet figure is lower than the average for Barnet and England average, but equal to the London average. For women, it is lower than the Barnet average and higher than the London and England average.

(Source: ONS Life expectancy by ward 1999-2007)

Figure 6. Life Expectancy in Years

	Males	Females
High Barnet	77.1	82.3
Barnet	78.6	82.7
London	77.1	81.7
England	77.3	81.5

Crime

For all categories except 'Burglary' and 'Fraud or forgery', crime rates in the year to February 2013 in Barnet are low compared with London as a whole. In the case of High Barnet, it is either equal to, or in more cases, slightly below the Barnet average in all categories, except for 'Criminal Damage' and 'Theft and handling' where it is slightly above.

(Source: Metropolitan Police Service).

Note: a crime is categorised as a robbery where force is intimated or used to steal property. Burglary is theft, or attempted theft, from a building where access is not authorised.

Mosaic

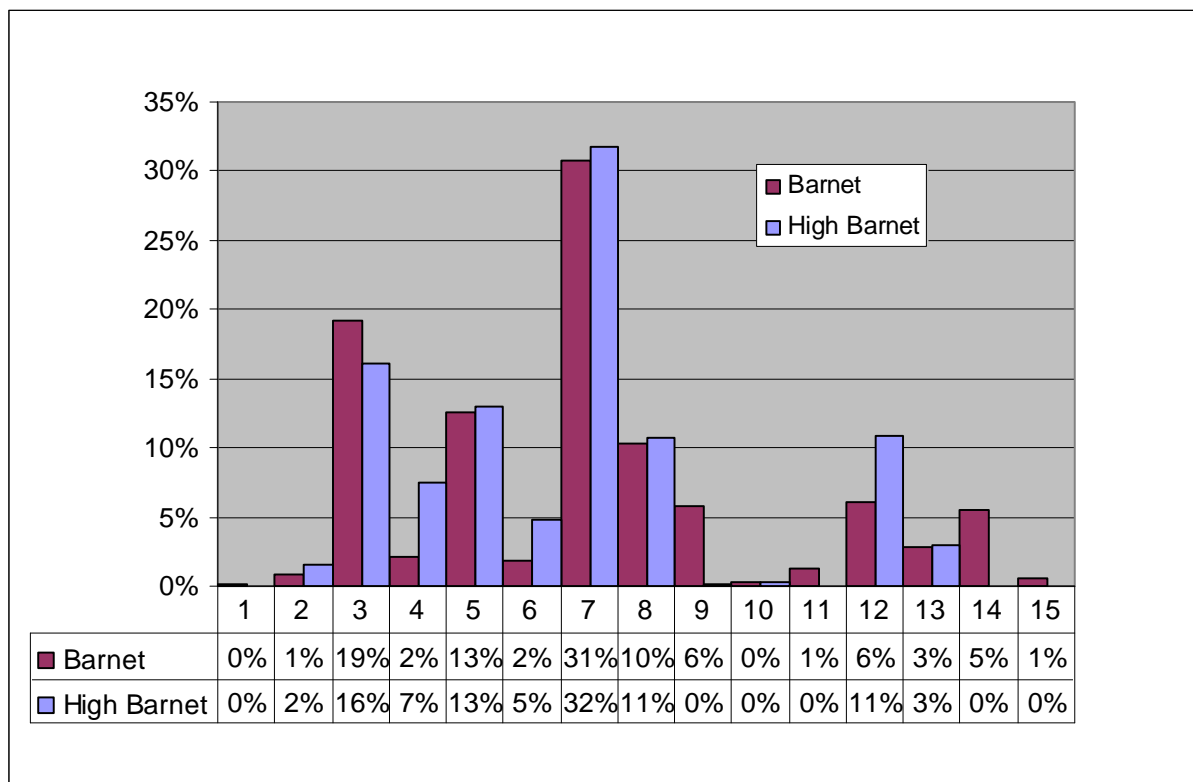
The council has bought the data used in this section from a commercial organisation, Experian. If the findings are used in other documents then this source must be acknowledged and copyright quoted in the following way: Mosaic data 2010 © Copyright 2004 Experian Ltd

- Experian’s Mosaic data brings together a large amount of data about areas and individual households from a variety of sources to classify all households according to 15 Groups and 67 Types. Experian does not claim one hundred percent accuracy for this product but it does use strong correlations to arrive at good predictions about the nature of each household in the borough. The classifications are highly detailed but summed up with a headline phrase.

Mosaic Groups

- High Barnet has a slightly lower than average proportion of households in Group 3; Wealthy people living in the most sought after neighbourhoods.
- High Barnet has slightly less than the borough average of Group 12 which are Active elderly people living in pleasant retirement locations. And has no Group 14 residents, while Barnet has 5%: Young people renting flats in high density social housing.
- All other groups are representative of the Barnet average.

Figure 7. Mosaic Groups in High Barnet



Group Code	Group Description
1	Residents of isolated rural communities
2	Residents of small and mid-sized towns with strong local roots
3	Wealthy people living in the most sought after neighbourhoods
4	Successful professionals living in suburban or semi-rural homes
5	Middle income families living in moderate suburban semis
6	Couples with young children in comfortable modern housing
7	Young, well-educated city dwellers
8	Couples and young singles in small modern starter homes

Group Code	Group Description
9	Lower income workers in urban terraces in often diverse areas
10	Owner occupiers in older-style housing in ex-industrial areas
11	Residents with sufficient incomes in right-to-buy social housing
12	Active elderly people living in pleasant retirement locations
13	Elderly people reliant on state support
14	Young people renting flats in high density social housing
15	Families in low-rise social housing with high levels of benefit need