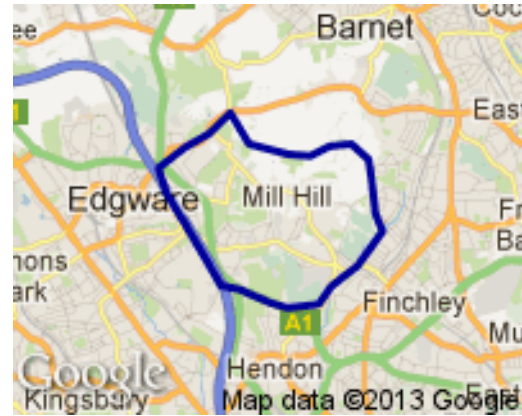


Profile of Mill Hill Ward



Geography

Mill Hill is the largest of Barnet’s wards with an area of 9.4 square kilometres.

Population

With 18,261 residents in 2012, Mill Hill ranks as the 4th largest ward in Barnet. It is expected to increase by 8% in the next decade, to 19,843 residents, becoming Barnet’s 3rd largest ward.

(Source: Barnet Hybrid Solution updated for MYE Jan 2012 update)

Population Density: 19.7 per hectare Ward Rank in Barnet: 19th (3rd lowest)

No. of Households: 6875

(Source: Census 2011¹)

Age Profile

Mill Hill ward’s age structure mirrors that of the borough as a whole in all age groups. *(Source: Barnet Hybrid Solution updated for MYE Jan 2012 update)*

Figure 1. Age Profile

2012	0-14	15-39	40-59	60-79	80+
Mill Hill	21%	38%	24%	13%	4%
BARNET	21%	35%	26%	14%	4%

¹ Census output is Crown copyright and is reproduced with the permission of the Controller of HMSO and the Queen's Printer for Scotland.

Ethnicity

65% of Mill Hill residents describe their ethnic origin as White British; the sixth highest proportion in Barnet and just above the Barnet average of 60%. The age profile otherwise represents the Barnet average. (Source: Barnet Census Profiles 2001)

Religion

In terms of faith Mill Hill mirrors that of the borough as a whole but with slightly more Christian and Jewish residents.

(Source: Census 2011)

Figure 2. Religion Profile

Ward/Area	Christian	Buddhist	Hindu	Jewish	Muslim	Sikh	Other Religion	No Religion	Religion not stated
BARNET	41%	1%	6%	15%	10%	0%	1%	16%	8%
Mill Hill	39%	1%	5%	19%	12%	0%	1%	14%	8%

Languages

46% of school children in Mill Hill do not speak English as a first language in the home, in line with the Barnet average (44%). Persian-Farsi, Urdu and Arabic are the most common languages other than English spoken in the homes of Mill Hill pupils attending Barnet schools (with 145, 71 and 68 pupils respectively).

(Source: PLASC January 2012: this data does not include pupils from Mill Hill who attend private schools or schools outside Barnet.)

Deprivation

The 2010 Index of Deprivation shows Barnet as a whole to be the 176th most deprived local authority out of the 354 for England and Wales – slightly below the average. Barnet has become less deprived in relation to England over the last three years. None of the LSOA's² in Mill Hill are within the 10% most income deprived nationally.

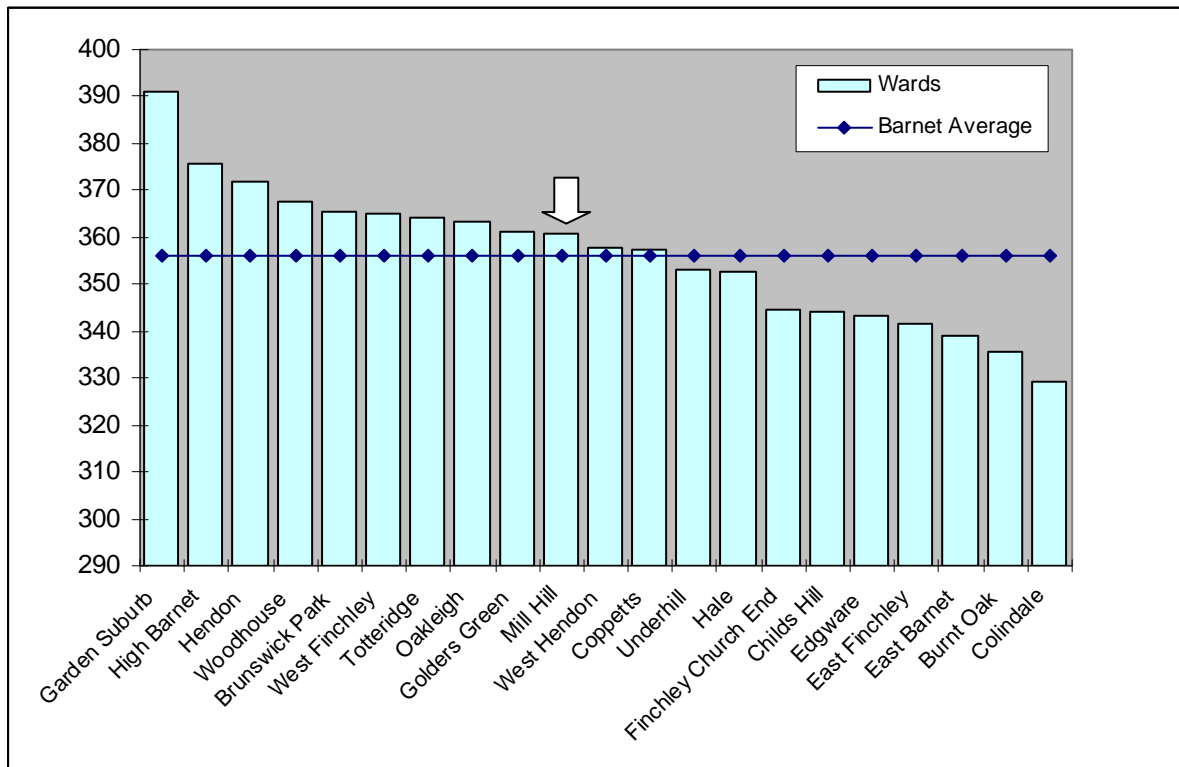
(Source: http://www.barnet.gov.uk/download/downloads/id/2348/deprivation_in_barnet_2012)

Education

The data for 2011/12 in the graph below shows the results for the 2,655 Barnet residents attending Barnet schools who took GCSEs. It shows pupils living in Mill Hill had the tenth highest GCSE equivalent point scores per pupil in the borough, just above the Barnet average. (Source: Performance & Data Management, Children's Service, LBB)

² Lower Super Output Areas (LSOAs) are standard statistical geographies developed by the Office for National Statistics, which contain around 1,500 people.

Figure 3. Average GCSE scores for 2011/12, by pupil's ward of residence



Income

Data from the company CACI shows Mill Hill to have a median average household income of £35,453 – above the borough average which was £33,701, and the seventh highest in the borough. (Source: CACI Paycheck data 2012)

In May 2012 there were 2,785 Mill Hill residents receiving a state pension, which is higher than the borough average of 2,434 per ward. (Source: DWP Information Directorate)

Working Age Benefits

The Jobseeker's allowance (JSA) is payable to people under pensionable age who are available for, and actively seeking, work. The overall rate of claiming for Mill Hill residents is lower than the borough and national levels. (Source: www.nomisweb.co.uk)

Figure 4. Total Jobseekers Allowance claimants (February 2013)

	Mill Hill (numbers)	Mill Hill (%)	Barnet (%)	Great Britain (%)
All people	282	2.4	2.8	3.9
Males	175	2.9	3.5	5.1
Females	107	1.8	2.2	2.7

Figure 5. DWP benefit claimants (August 2012)

	Mill Hill (numbers)	Mill Hill (%)	Barnet (%)	Great Britain (%)
Total claimants	1,130	9.5	10.9	14.3
Job seekers	300	2.5	2.8	3.7
ESA and incapacity benefits	450	3.8	4.7	6.3
Lone parents	150	1.3	1.3	1.4
Carers	95	0.8	0.9	1.2
Others on income related benefits	30	0.3	0.3	0.4
Disabled	90	0.8	0.8	1.1
Bereaved	15	0.1	0.2	0.2
Key out-of-work benefits [†]	930	7.8	9.1	11.8

Health

Average life expectancy is a key summary indicator of health. For men and women, the Mill Hill figure is higher than the average for Barnet, London & England.

(Source: ONS Life expectancy by ward 1999-2007)

Figure 6. Life Expectancy in Years

	Males	Females
Mill Hill	79.4	83.9
Barnet	78.6	82.7
London	77.1	81.7
England	77.3	81.5

Crime

For all categories except 'Burglary' and 'Fraud or forgery', crime rates in the year to February 2013 in Barnet are low compared with London as a whole. In the case of Mill Hill, it is either equal to, or in more cases, below the Barnet average in all categories, except for 'Burglary', 'Fraud or forgery', 'Robbery' and 'Theft and handling' where it is slightly above.

(Source: Metropolitan Police Service).

Note: a crime is categorised as a robbery where force is intimated or used to steal property. Burglary is theft, or attempted theft, from a building where access is not authorised.

Mosaic

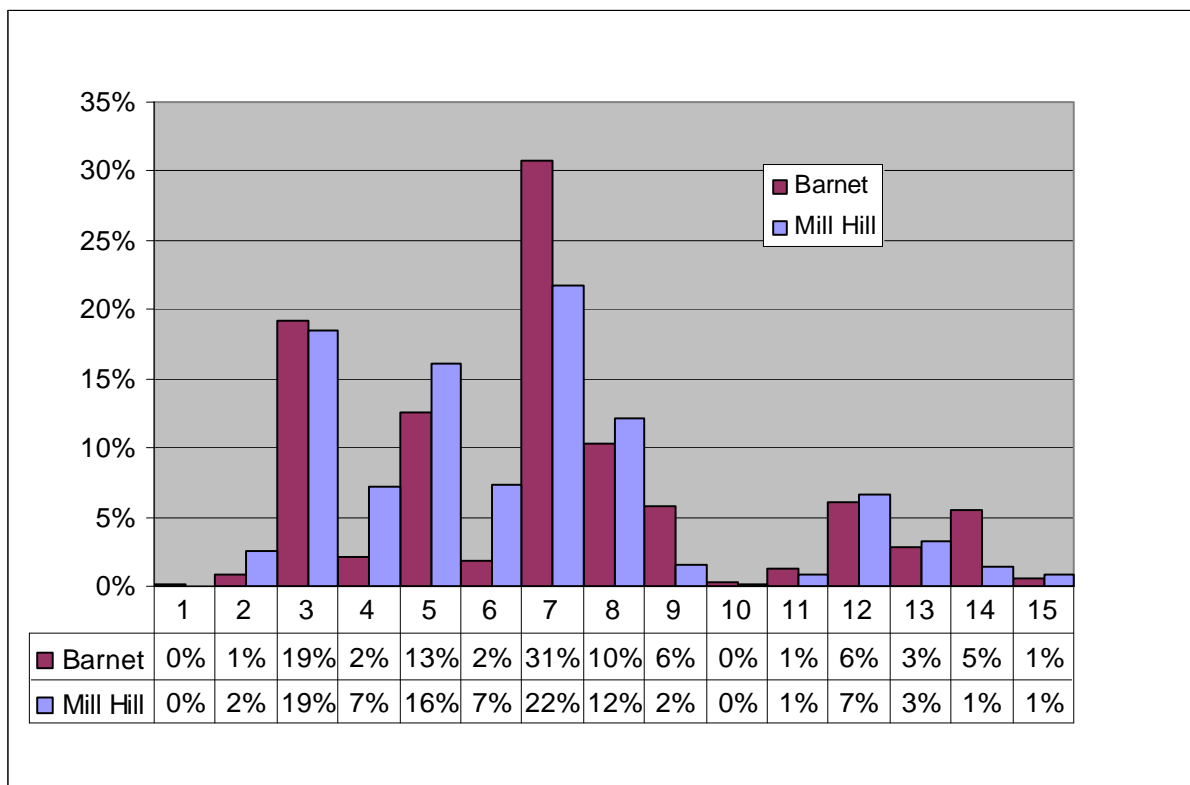
The council has bought the data used in this section from a commercial organisation, Experian. If the findings are used in other documents then this source must be acknowledged and copyright quoted in the following way: Mosaic data 2010 © Copyright 2004 Experian Ltd

- Experian’s Mosaic data brings together a large amount of data about areas and individual households from a variety of sources to classify all households according to 15 Groups and 67 Types. Experian does not claim one hundred percent accuracy for this product but it does use strong correlations to arrive at good predictions about the nature of each household in the borough. The classifications are highly detailed but summed up with a headline phrase.

Mosaic Groups

- Mill Hill has a higher than average proportion of households in Group 4; these are Successful professionals living in suburban or semi-rural homes.
- Mill Hill has less than the borough average of Group 7 (Barnet’s most popular group) which are Young educated city-dwellers.

Figure 7. Mosaic Groups in Mill Hill



Group Code	Group Description
1	Residents of isolated rural communities
2	Residents of small and mid-sized towns with strong local roots
3	Wealthy people living in the most sought after neighbourhoods
4	Successful professionals living in suburban or semi-rural homes
5	Middle income families living in moderate suburban semis
6	Couples with young children in comfortable modern housing
7	Young, well-educated city dwellers
8	Couples and young singles in small modern starter homes

Group Code	Group Description
9	Lower income workers in urban terraces in often diverse areas
10	Owner occupiers in older-style housing in ex-industrial areas
11	Residents with sufficient incomes in right-to-buy social housing
12	Active elderly people living in pleasant retirement locations
13	Elderly people reliant on state support
14	Young people renting flats in high density social housing
15	Families in low-rise social housing with high levels of benefit need