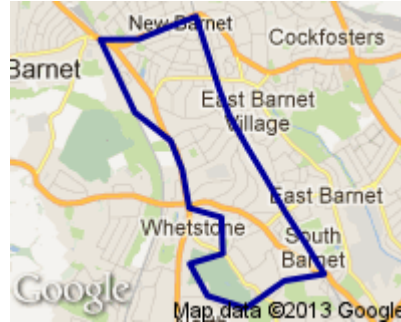
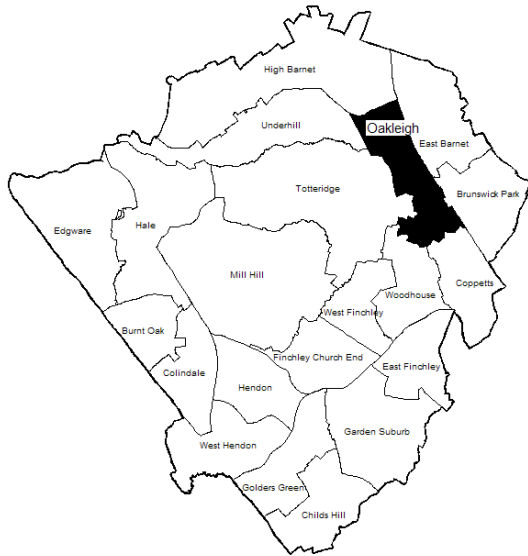


Profile of Oakleigh Ward



Geography

Oakleigh is the tenth largest of Barnet’s wards with an area of 3.3 square kilometres.

Population

With 15,180 residents in 2012, Oakleigh ranks as the 13th largest in Barnet. With a projected decrease of 1.7%, to 15,908 residents, it is expected to become 16th in 2022.

(Source: Barnet Hybrid Solution updated for MYE Jan 2012 update)

Population Density: 47.7 per hectare Ward Rank in Barnet: 13th most dense

No. of Households: 6172

(Source: Census 2011¹)

Age Profile

Oakleigh ward’s age structure mirrors that of the borough as a whole in all age groups.

(Source: Barnet Hybrid Solution updated for MYE Jan 2012 update)

Figure 1. Age Profile

| 2012 | 0-14 | 15-39 | 40-59 | 60-79 | 80+ |
|-----------------|------|-------|-------|-------|-----|
| Oakleigh | 17% | 34% | 27% | 16% | 5% |
| BARNET | 21% | 35% | 26% | 14% | 4% |

¹ Census output is Crown copyright and is reproduced with the permission of the Controller of HMSO and the Queen's Printer for Scotland.

Ethnicity

70% of Oakleigh residents describe their ethnic origin as White British; the fourth highest proportion in Barnet and above the Barnet average of 60%. Apart from that the Oakleigh profile roughly mirrors the Barnet average in all other groups. (Source: Barnet Census Profiles 2001)

Religion

In terms of faith Oakleigh has a slightly higher proportion of Christians among its residents, 53% as against the borough average of 41%. Oakleigh has a lower proportion of Jewish residents (9% against Barnet average of 15%) and also Muslim residents (7% against average of 10%)

(Source: Census 2011)

Figure 2. Religion Profile

| Ward/Area | Christian | Buddhist | Hindu | Jewish | Muslim | Sikh | Other Religion | No Religion | Religion not stated |
|-----------------|-----------|----------|-------|--------|--------|------|----------------|-------------|---------------------|
| BARNET | 41% | 1% | 6% | 15% | 10% | 0% | 1% | 16% | 8% |
| Oakleigh | 53% | 1% | 5% | 9% | 7% | 0% | 1% | 16% | 8% |

Languages

35% of school children in Oakleigh do not speak English as a first language in the home. This is lower than the Barnet average (44%). Persian-Farsi, Gujarati and Greek are the most common languages other than English spoken in the homes of Oakleigh pupils attending Barnet schools (with 58, 51 and 49 pupils respectively).

(Source: PLASC January 2012: this data does not include pupils from Oakleigh who attend private schools or schools outside Barnet.)

Deprivation

The 2010 Index of Deprivation shows Barnet as a whole to be the 176th most deprived local authority out of the 354 for England and Wales – slightly below the average. Barnet has become less deprived in relation to England over the last three years. None of the LSOA’s² in Oakleigh are within the 10% most income deprived nationally.

(Source: http://www.barnet.gov.uk/download/downloads/id/2348/deprivation_in_barnet_2012)

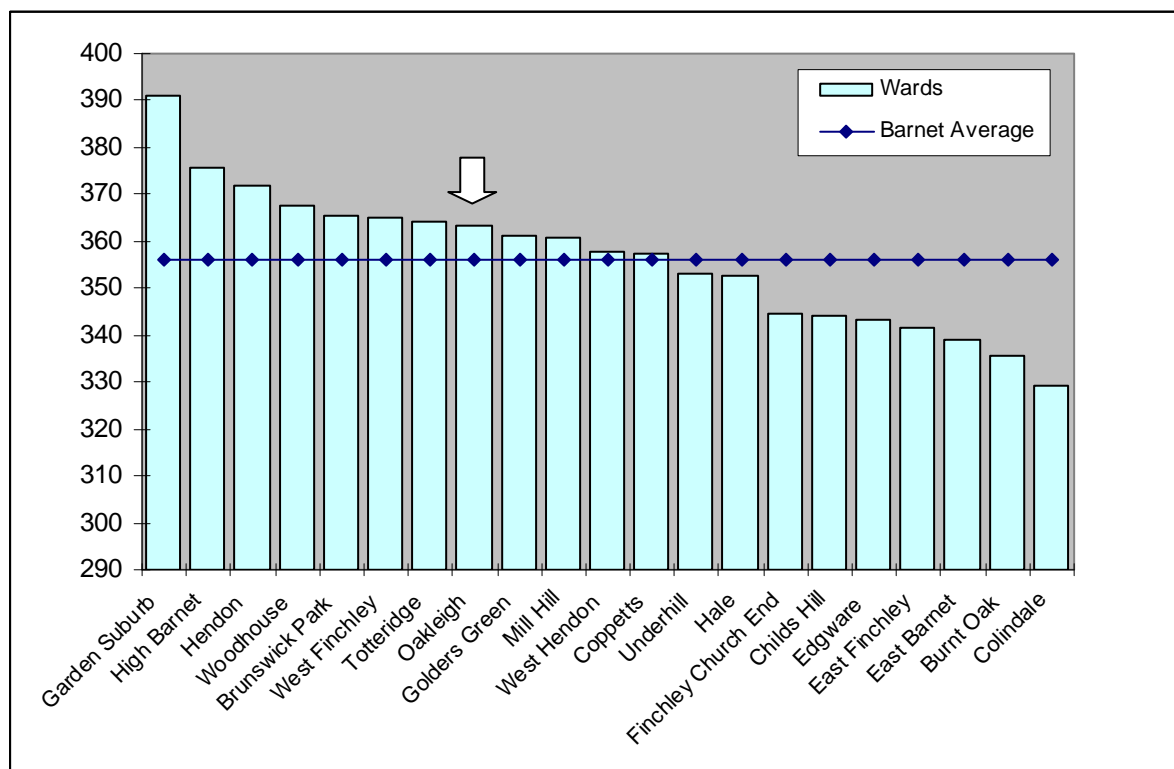
Education

The data for 2011/12 in the graph below shows the results for the 2,655 Barnet residents attending Barnet schools who took GCSEs. It shows pupils living in Oakleigh had the eighth highest GCSE equivalent point scores per pupil in the borough, above the Barnet average.

(Source: Performance & Data Management, Children's Service, LBB)

² Lower Super Output Areas (LSOAs) are standard statistical geographies developed by the Office for National Statistics, which contain around 1,500 people.

Figure 3. Average GCSE scores for 2011/12, by pupil's ward of residence



Income

Data from the company CACI shows Oakleigh to have a median average household income of £35,969 – above the borough average which was £33,701, and the sixth highest in the borough. (Source: CACI Paycheck data 2012)

In May 2012 there were 2,855 Oakleigh residents receiving a state pension, which is higher than the borough average of 2,434 per ward.

(Source: DWP Information Directorate)

Working Age Benefits

The Jobseeker's allowance (JSA) is payable to people under pensionable age who are available for, and actively seeking, work. The overall rate of claiming for Oakleigh residents is lower than the Barnet and national levels. (Source: www.nomisweb.co.uk)

Figure 4. Total Jobseekers Allowance claimants (February 2013)

| | Oakleigh (numbers) | Oakleigh (%) | Barnet (%) | Great Britain (%) |
|------------|--------------------|--------------|------------|-------------------|
| All people | 252 | 2.4 | 2.8 | 3.9 |
| Males | 146 | 2.6 | 3.5 | 5.1 |
| Females | 106 | 2.1 | 2.2 | 2.7 |

Figure 5. DWP benefit claimants (August 2012)

| | Oakleigh (numbers) | Oakleigh (%) | Barnet (%) | Great Britain (%) |
|---------------------------------------|-----------------------|-----------------|---------------|----------------------|
| All people | 1,010 | 9.5 | 10.9 | 14.3 |
| Job seekers | 285 | 2.7 | 2.8 | 3.7 |
| ESA and incapacity benefits | 390 | 3.7 | 4.7 | 6.3 |
| Lone parents | 160 | 1.5 | 1.3 | 1.4 |
| Carers | 75 | 0.7 | 0.9 | 1.2 |
| Others on income related benefits | 25 | 0.2 | 0.3 | 0.4 |
| Disabled | 60 | 0.6 | 0.8 | 1.1 |
| Bereaved | 15 | 0.1 | 0.2 | 0.2 |
| Key out-of-work benefits [†] | 860 | 8.1 | 9.1 | 11.8 |

Health

Average life expectancy is a key summary indicator of health. For men, the Oakleigh figure is slightly lower than the average for Barnet, and higher than the London & England average. For women it is higher than the average for Barnet, London & England.

(Source: ONS Life expectancy by ward 1999-2007)

Figure 6. Life Expectancy in Years

| | Males | Females |
|----------|-------|---------|
| Oakleigh | 78.3 | 83.1 |
| Barnet | 78.6 | 82.7 |
| London | 77.1 | 81.7 |
| England | 77.3 | 81.5 |

Crime

For all categories except 'Burglary' and 'Fraud or forgery', crime rates in the year to February 2013 in Barnet are low compared with London as a whole. In the case of Oakleigh, it is in most cases below the Barnet average in all categories, except for 'Burglary' and 'Criminal Damage' where it is slightly above.

(Source: Metropolitan Police Service).

Note: a crime is categorised as a robbery where force is intimidated or used to steal property. Burglary is theft, or attempted theft, from a building where access is not authorised.

Mosaic

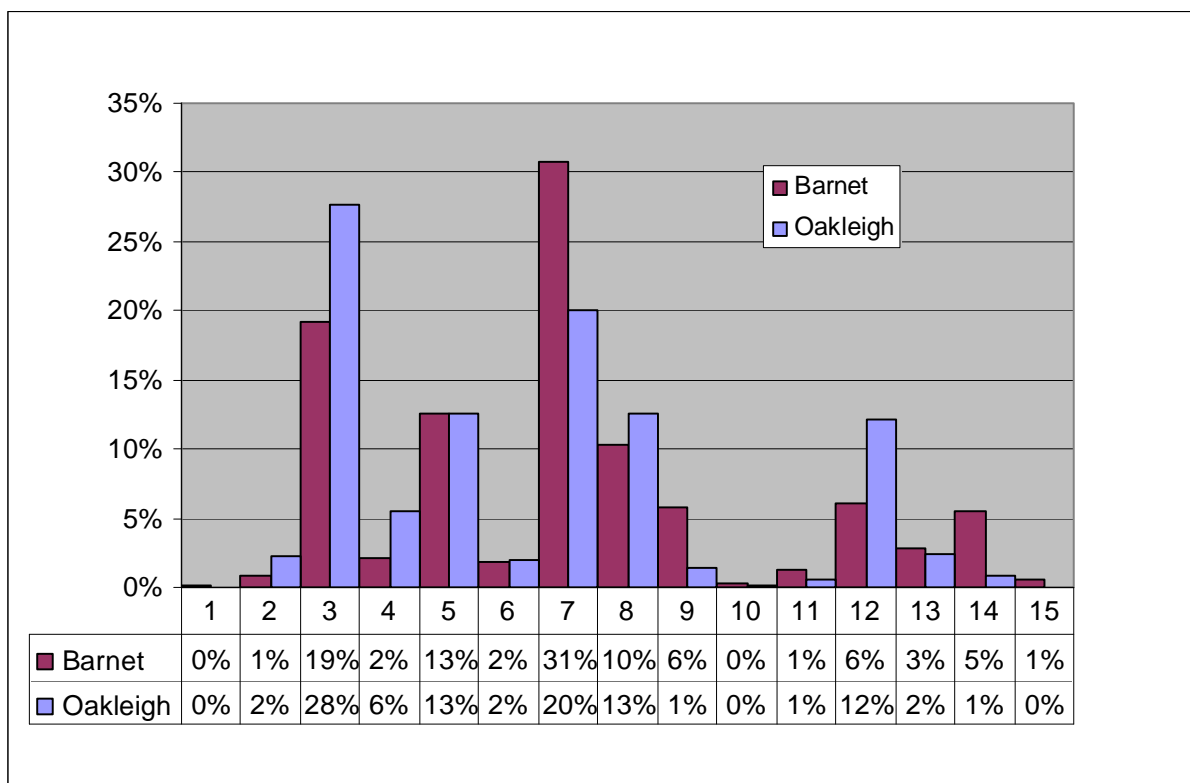
The council has bought the data used in this section from a commercial organisation, Experian. If the findings are used in other documents then this source must be acknowledged and copyright quoted in the following way: Mosaic data 2010 © Copyright 2004 Experian Ltd

- Experian’s Mosaic data brings together a large amount of data about areas and individual households from a variety of sources to classify all households according to 15 Groups and 67 Types. Experian does not claim one hundred percent accuracy for this product but it does use strong correlations to arrive at good predictions about the nature of each household in the borough. The classifications are highly detailed but summed up with a headline phrase.

Mosaic Groups

- Oakleigh has a substantially higher than average proportion of households in Group 3; these are Wealthy people living in the most sought after neighbourhoods. Also a higher proportion of Group 12: Active elderly people living in pleasant retirement locations.
- Oakleigh has substantially less than the borough average of Group 7 (Barnet’s most popular group) which are Young educated city-dwellers, and also of Group 14; Young people renting flats in high density social housing.

Figure 7. Mosaic Groups in Oakleigh



| Group Code | Group Description |
|------------|---|
| 1 | Residents of isolated rural communities |
| 2 | Residents of small and mid-sized towns with strong local roots |
| 3 | Wealthy people living in the most sought after neighbourhoods |
| 4 | Successful professionals living in suburban or semi-rural homes |
| 5 | Middle income families living in moderate suburban semis |
| 6 | Couples with young children in comfortable modern housing |
| 7 | Young, well-educated city dwellers |
| 8 | Couples and young singles in small modern starter homes |

| Group Code | Group Description |
|------------|--|
| 9 | Lower income workers in urban terraces in often diverse areas |
| 10 | Owner occupiers in older-style housing in ex-industrial areas |
| 11 | Residents with sufficient incomes in right-to-buy social housing |
| 12 | Active elderly people living in pleasant retirement locations |
| 13 | Elderly people reliant on state support |
| 14 | Young people renting flats in high density social housing |
| 15 | Families in low-rise social housing with high levels of benefit need |
| | |