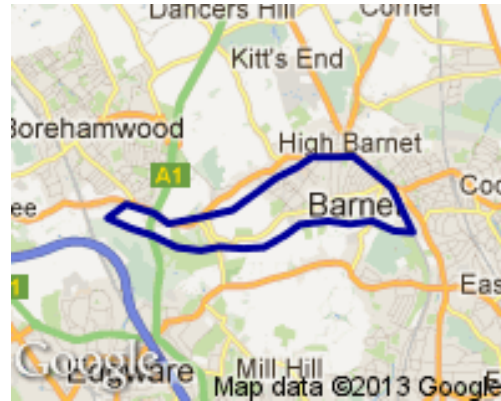


Profile of Underhill Ward



Geography

Underhill is the seventh largest of Barnet’s wards with an area of 4.5 square kilometres.

Population

With 17,255 residents in 2012, Underhill ranks as the 5th largest ward in Barnet. It is expected to increase by 5% in the next decade, to 18,094 residents and is expected to be 6th largest.

(Source: Barnet Hybrid Solution updated for MYE Jan 2012 update)

Population Density: 35 per hectare Ward Rank in Barnet: 15th most dense

No. of Households: 6304

(Source: Census 2011¹)

Age Profile

Underhill ward’s age structure mirrors that of the borough as a whole in all age groups.

(Source: Barnet Hybrid Solution updated for MYE Jan 2012 update)

Figure 1. Age Profile

2012	0-14	15-39	40-59	60-79	80+
UNDERHILL	19%	34%	28%	16%	3%
BARNET	21%	35%	26%	14%	4%

¹ Census output is Crown copyright and is reproduced with the permission of the Controller of HMSO and the Queen's Printer for Scotland.

Ethnicity

75% of Underhill residents describe their ethnic origin as White British; the third highest proportion in Barnet and higher than the Barnet average of 60%. The ward is under represented in all other groups apart from residents who describe their ethnic origin as White Irish, which is slightly higher than the Barnet average. (Source: Barnet Census Profiles 2001)

Religion

In terms of faith Underhill has the highest proportion of Christians among its residents, 56% as against the borough average of 41%. Underhill has fewer Hindu, Jewish and Muslim residents than Barnet as a whole.

(Source: Census 2011)

Figure 2. Religion Profile

Ward/Area	Christian	Buddhist	Hindu	Jewish	Muslim	Sikh	Other Religion	No Religion	Religion not stated
BARNET	41%	1%	6%	15%	10%	0%	1%	16%	8%
Underhill	56%	1%	3%	3%	8%	0%	1%	19%	9%

Languages

33% of school children in Underhill do not speak English as a first language in the home. This is lower than the Barnet average (44%). Persian-Farsi, Somali and Albanian-Shqip are the most common languages other than English spoken in the homes of Underhill pupils attending Barnet schools (with 73, 53 and 49 pupils respectively).

(Source: PLASC January 2012: this data does not include pupils from Underhill who attend private schools or schools outside Barnet.)

Deprivation

The 2010 Index of Deprivation shows Barnet as a whole to be the 176th most deprived local authority out of the 354 for England and Wales – slightly below the average. Barnet has become less deprived in relation to England over the last three years. Two of the LSOA's² in Underhill are within the 10% most income deprived nationally.

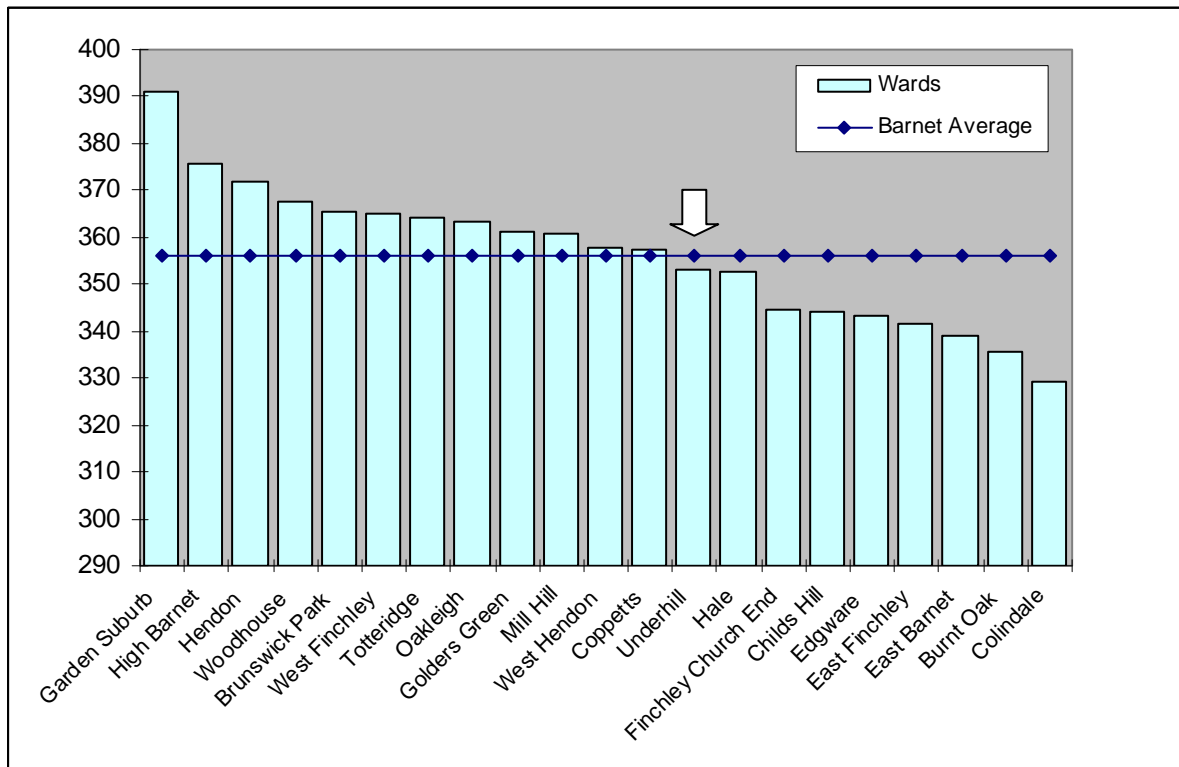
(Source: http://www.barnet.gov.uk/download/downloads/id/2348/deprivation_in_barnet_2012)

Education

The data for 2011/12 in the graph below shows the results for the 2,655 Barnet residents attending Barnet schools who took GCSEs. It shows pupils living in Underhill had the thirteenth highest GCSE equivalent point scores per pupil in the borough, just below the Barnet average. (Source: Performance & Data Management, Children's Service, LBB)

² Lower Super Output Areas (LSOAs) are standard statistical geographies developed by the Office for National Statistics, which contain around 1,500 people.

Figure 3. Average GCSE scores for 2011/12, by pupil's ward of residence



Income

Data from the company CACI shows Underhill to have a median average household income of £29,361 – below the borough average which was £33,701, and the third lowest in the borough. (Source: CACI Paycheck data 2012)

In May 2012 there were 2,860 Underhill residents receiving a state pension, which is significantly lower than the borough average of 2,434 per ward. (Source: DWP Information Directorate)

Working Age Benefits

The Jobseeker's allowance (JSA) is payable to people under pensionable age who are available for, and actively seeking, work. The overall rate of claiming for Underhill residents is higher than the borough level but lower than national levels. (Source: www.nomisweb.co.uk)

Figure 4. Total Jobseekers Allowance claimants (January 2013)

	Underhill (numbers)	Underhill (%)	Barnet (%)	Great Britain (%)
All people	399	3.6	2.8	3.8
Males	223	4.0	4.5	5.0
Females	176	3.2	2.2	2.6

Figure 5. DWP benefit claimants (May 2012)

	Underhill (numbers)	Underhill (%)	Barnet (%)	Great Britain (%)
All people	1,510	13.6	11.0	14.4
Job seekers	375	3.4	2.8	3.7
ESA & Incapacity benefits	655	5.9	4.7	6.3
Lone parents	215	1.9	1.4	1.5
Carers	120	1.1	0.9	1.2
Others on income related benefits	35	0.3	0.3	0.4
Disabled	90	0.8	0.8	1.1
Bereaved	20	0.2	0.2	0.2
Key out-of-work benefits ³	1,280	11.6	9.2	11.9

Health

Average life expectancy is a key summary indicator of health. For men, the Underhill figure is lower than the average for Barnet, and slightly higher than the London & England average. For women it is slightly lower than the average for Barnet, London & England.

(Source: ONS Life expectancy by ward 1999-2007)

Figure 6. Life Expectancy in Years

	Males	Females
Underhill	77.9	81.8
Barnet	78.6	82.7
London	77.1	81.7
England	77.3	81.5

Crime

For all categories except 'Burglary' and 'Fraud or forgery', crime rates in the year to February 2013 in Barnet are low compared with London as a whole. In the case of Underhill, it is either equal to, or in more cases, below the Barnet average in all categories, except for 'Criminal Damage', 'Drugs offences' 'Sexual offences' and 'Violence against the Person' where it is slightly above.

(Source: Metropolitan Police Service).

Note: a crime is categorised as a robbery where force is intimidated or used to steal property. Burglary is theft, or attempted theft, from a building where access is not authorised.

³ Key out-of-work benefits includes the groups: job seekers, ESA and incapacity benefits, lone parents and others on income related benefits

Mosaic

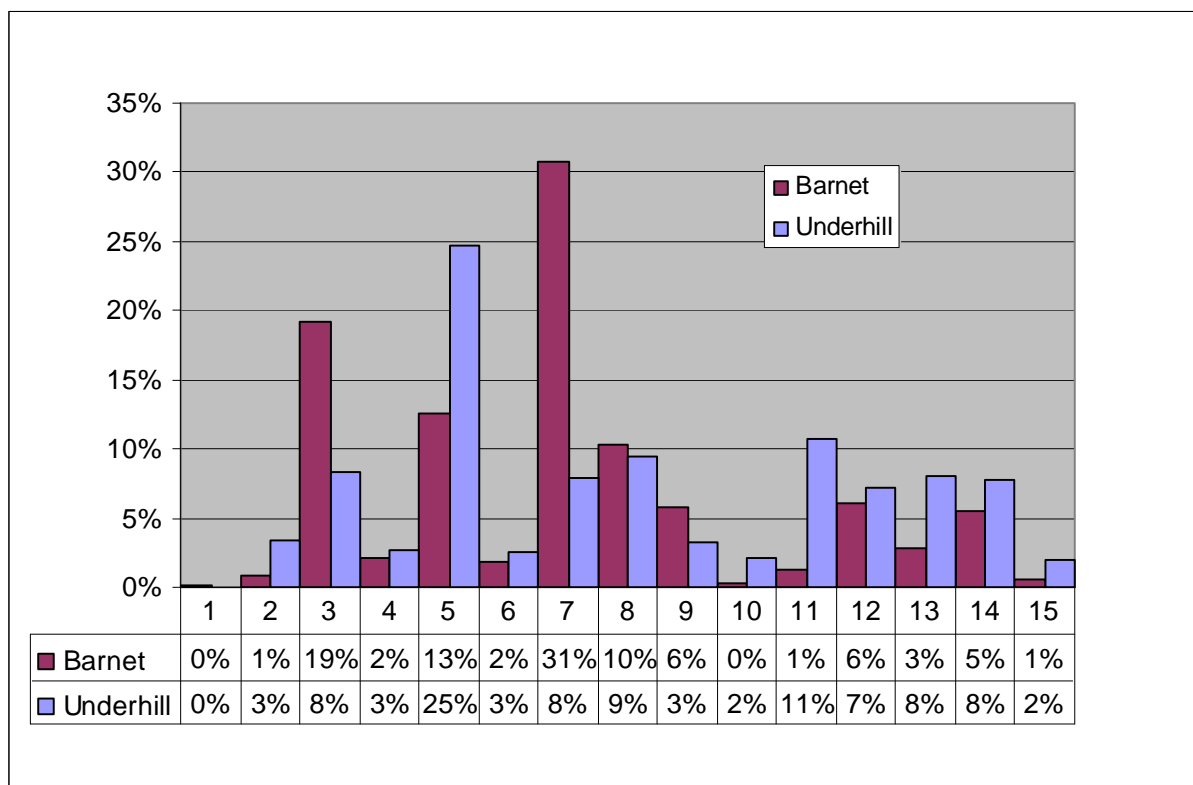
The council has bought the data used in this section from a commercial organisation, Experian. If the findings are used in other documents then this source must be acknowledged and copyright quoted in the following way: Mosaic data 2010 © Copyright 2004 Experian Ltd

- Experian’s Mosaic data brings together a large amount of data about areas and individual households from a variety of sources to classify all households according to 15 Groups and 67 Types. Experian does not claim one hundred percent accuracy for this product but it does use strong correlations to arrive at good predictions about the nature of each household in the borough. The classifications are highly detailed but summed up with a headline phrase.

Mosaic Groups

- Underhill has a substantially higher than average proportion of households in Group 5; these are Middle income families living in moderate suburban semis.
- Underhill has substantially less than the borough average of Group 7 (Barnet’s most popular group) which are Young educated city-dwellers, and also of Group 3; Wealthy people living in the most sought after neighbourhoods

Figure 7. Mosaic Groups in Underhill



Group Code	Group Description
1	Residents of isolated rural communities
2	Residents of small and mid-sized towns with strong local roots
3	Wealthy people living in the most sought after neighbourhoods
4	Successful professionals living in suburban or semi-rural homes
5	Middle income families living in moderate suburban semis
6	Couples with young children in comfortable modern housing
7	Young, well-educated city dwellers
8	Couples and young singles in small modern starter homes

Group Code	Group Description
9	Lower income workers in urban terraces in often diverse areas
10	Owner occupiers in older-style housing in ex-industrial areas
11	Residents with sufficient incomes in right-to-buy social housing
12	Active elderly people living in pleasant retirement locations
13	Elderly people reliant on state support
14	Young people renting flats in high density social housing
15	Families in low-rise social housing with high levels of benefit need