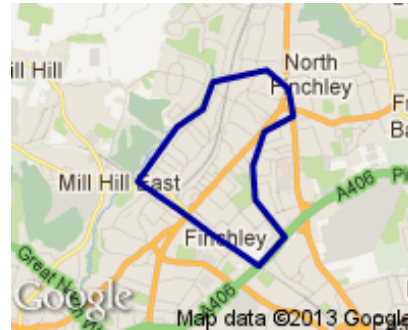


## Profile of West Finchley Ward



### Geography

West Finchley is the second smallest of Barnet’s wards with an area of 8.2 square kilometres.

### Population

West Finchley is one of the borough’s least populous wards, with 15,849 residents in 2012, ranking it 18<sup>th</sup> out of 21 wards. The population is not expected to grow over the next 10 years, and it is expected to be the 17<sup>th</sup> most populous in 2022.

*(Source: Barnet Hybrid Solution updated for MYE Jan 2012 update)*

Population Density: 76.5 per hectare      Ward Rank in Barnet: 2nd most dense

No. of Households: 6685

*(Source: Census 2011<sup>1</sup>)*

### Age Profile

The ward’s age structure mirrors that of the borough as a whole in the older age groups but has slightly less people in the 0-14 age group and slightly more people in the 15-39 age group. *(Source: Barnet Hybrid Solution updated for MYE Jan 2012 update)*

**Figure 1. Age Profile**

2012	0-14	15-39	40-59	60-79	80+
<b>WEST FINCHLEY</b>	18%	41%	25%	14%	4%
<b>BARNET</b>	21%	35%	26%	14%	4%

<sup>1</sup> Census output is Crown copyright and is reproduced with the permission of the Controller of HMSO and the Queen's Printer for Scotland.

## Diversity

16% of West Finchley's residents describe their ethnic group as Indian – the second highest proportion in Barnet and well above the 9% figure for the borough.

(Source: Barnet Census Profiles 2001)

## Religion

In terms of faith the ward also has the joint third highest proportion of Hindus among its residents (9% as against 6% for the borough). Woodhouse has fewer Jewish and Muslim residents than Barnet as a whole. (Source: Census 2011)

**Figure 2. Religion Profile**

Ward/Area	Christian	Buddhist	Hindu	Jewish	Muslim	Sikh	Other Religion	No Religion	Religion not stated
<b>BARNET</b>	41%	1%	6%	15%	10%	0%	1%	16%	8%
<b>West Finchley</b>	38%	2%	9%	9%	8%	1%	2%	22%	9%

## Languages

47% of school children in West Finchley do not speak English as a first language in the home. This is in line with the Barnet average (44%). Japanese and Gujarati are the most common languages other than English spoken in the homes of West Finchley pupils attending Barnet schools (with 96 and 90 pupils respectively), followed by Farsi, Polish and Arabic.

(Source: PLASC January 2012: this data does not include pupils from West Finchley who attend private schools or schools outside Barnet.)

## Deprivation

The 2010 Index of Deprivation shows Barnet as a whole to be the 176<sup>th</sup> most deprived local authority out of the 354 for England and Wales – slightly below the average. Barnet has become less deprived in relation to England over the last three years. None of the LSOA's<sup>2</sup> in West Finchley are within the 10% most or the 10% least deprived nationally.

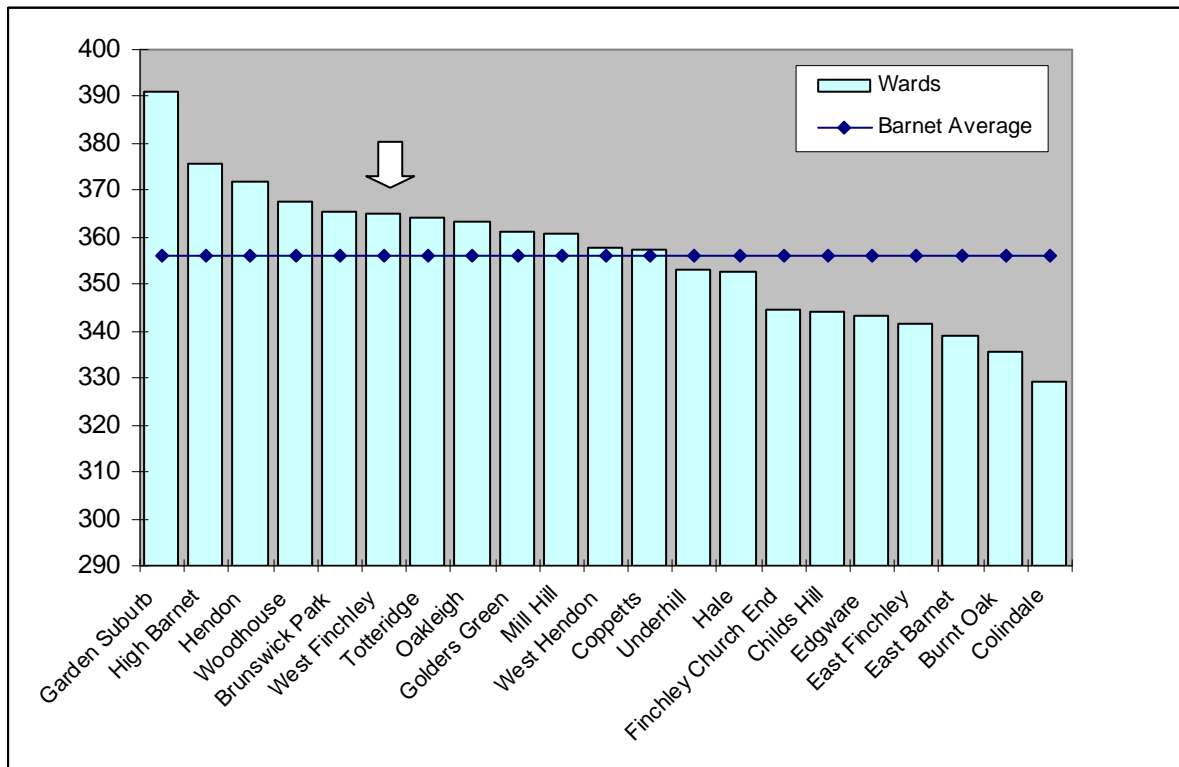
(Source: [http://www.barnet.gov.uk/download/downloads/id/2348/deprivation\\_in\\_barnet\\_2012](http://www.barnet.gov.uk/download/downloads/id/2348/deprivation_in_barnet_2012))

## Education

The data for 2011/12 in the graph below shows the results for the 2,655 Barnet residents attending Barnet schools who took GCSEs. It shows pupils living in West Finchley had the sixth highest GCSE equivalent point scores per pupil in the borough. (Source: Performance & Data Management, Children's Service, LBB)

<sup>2</sup> Lower Super Output Areas (LSOAs) are standard statistical geographies developed by the Office for National Statistics, which contain around 1,500 people.

**Figure 3. Average GCSE scores for 2011/12, by pupil's ward of residence**



**Income**

Data from the company CACI shows West Finchley to have a median average household income of £36,898 – above the borough average which was £33,701, fifth highest in the borough. (Source: CACI Paycheck data 2012)

In May 2012 there were 2,115 West Finchley residents receiving a state pension, which is slightly lower than the borough average of 2,434 per ward. (Source: DWP Information Directorate).

**Working Age Benefits**

The Jobseeker's allowance (JSA) is payable to people under pensionable age who are available for, and actively seeking, work. The overall rate of claiming for West Finchley residents is lower than both the borough and national levels. (Source: www.nomisweb.co.uk)

**Figure 4. Total Jobseekers Allowance claimants (November 2012)**

	West Finchley (numbers)	West Finchley (%)	Barnet (%)	Great Britain (%)
All people	247	2.4	3.0	3.8
Males	143	2.8	3.4	4.9
Females	104	1.9	2.6	2.6

**Figure 5. DWP benefit claimants (February 2012)**

	West Finchley (numbers)	West Finchley (%)	Barnet (%)	Great Britain (%)
All people	1035	9.9	11.5	15.0
Job seekers	285	2.7	3.1	4.1
ESA & Incapacity benefits	465	4.4	4.9	6.5
Lone parents	80	0.8	1.4	1.5
Carers	70	0.7	0.9	1.2
Others on income related benefits	50	0.5	0.4	0.4
Disabled	65	0.6	0.8	1.1
Bereaved	20	0.2	0.2	0.2
Key out-of-work benefits <sup>3</sup>	880	8.4	9.7	12.5

## Health

Average life expectancy is a key summary indicator of health. For men, the West Finchley figure is higher than the average for Barnet, London & England. For females the figure is slightly lower than the Barnet average, and in line with London and England.

(Source: ONS Life expectancy by ward 1999-2007)

**Figure 6. Life Expectancy in Years**

	Males	Females
West Finchley	79.4	81.3
Barnet	78.6	82.7
London	77.1	81.7
England	77.3	81.5

## Crime

For all categories except 'Burglary' and 'Fraud or forgery', crime rates in the year to February 2013 in Barnet are low compared with London as a whole. In the case of West Finchley, it is either equal to, or in more cases, below the Barnet average in all categories, except for 'Burglary', 'Drugs offences' and 'Sexual offences' where it is slightly above.

(Source: Metropolitan Police Service).

Note: a crime is categorised as a robbery where force is intimidated or used to steal property. Burglary is theft, or attempted theft, from a building where access is not authorised.

<sup>3</sup> Key out-of-work benefits includes the groups: job seekers, ESA and incapacity benefits, lone parents and others on income related benefits

## Mosaic

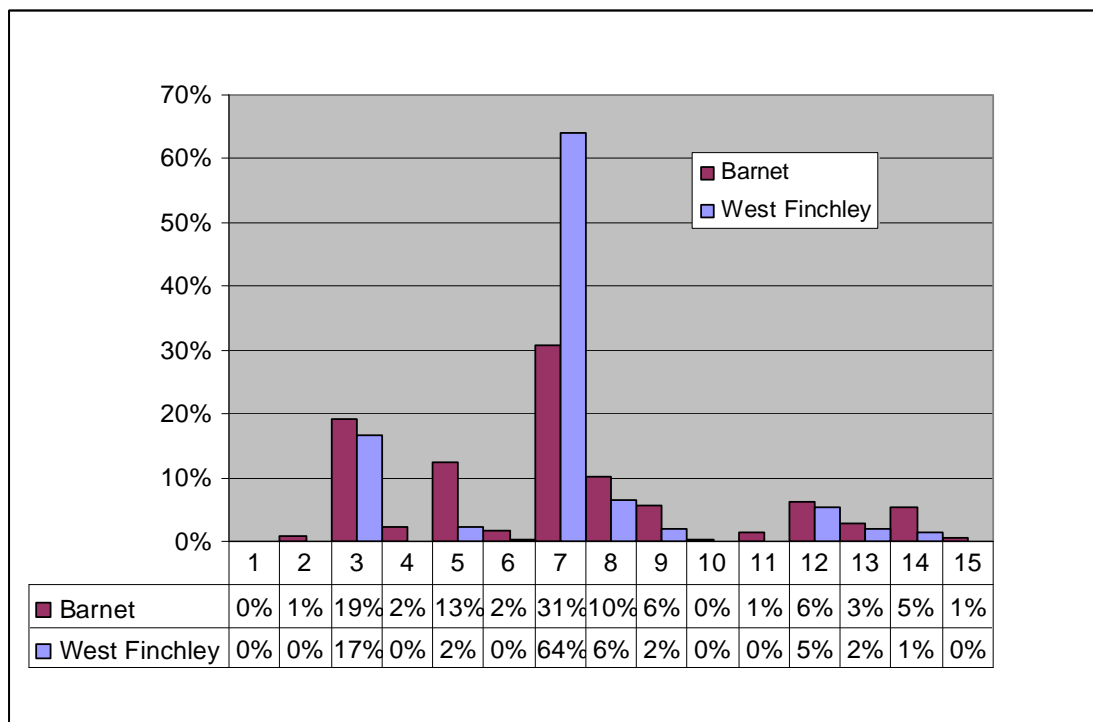
The council has bought the data used in this section from a commercial organisation, Experian. If the findings are used in other documents then this source must be acknowledged and copyright quoted in the following way: Mosaic data 2010 © Copyright 2004 Experian Ltd

- Experian’s Mosaic data brings together a large amount of data about areas and individual households from a variety of sources to classify all households according to 15 Groups and 67 Types. Experian does not claim one hundred percent accuracy for this product but it does use strong correlations to arrive at good predictions about the nature of each household in the borough. The classifications are highly detailed but summed up with a headline phrase.

### Mosaic Groups in West Finchley

- West Finchley has a substantially higher than average proportion of households in Group 7, the most common Mosaic group in Barnet. These are young, educated city dwellers.
- West Finchley has less than the borough average of Group 5 which are Middle income families living in moderate suburban semis.

**Figure 7. Mosaic Groups in West Finchley**



Group Code	Group Description
<b>1</b>	Residents of isolated rural communities
<b>2</b>	Residents of small and mid-sized towns with strong local roots
<b>3</b>	Wealthy people living in the most sought after neighbourhoods
<b>4</b>	Successful professionals living in suburban or semi-rural homes
<b>5</b>	Middle income families living in moderate suburban semis
<b>6</b>	Couples with young children in comfortable modern housing
<b>7</b>	Young, well-educated city dwellers
<b>8</b>	Couples and young singles in small modern starter homes

Group Code	Group Description
<b>9</b>	Lower income workers in urban terraces in often diverse areas
<b>10</b>	Owner occupiers in older-style housing in ex-industrial areas
<b>11</b>	Residents with sufficient incomes in right-to-buy social housing
<b>12</b>	Active elderly people living in pleasant retirement locations
<b>13</b>	Elderly people reliant on state support
<b>14</b>	Young people renting flats in high density social housing
<b>15</b>	Families in low-rise social housing with high levels of benefit need