

Profile of West Hendon Ward



Geography

West Hendon is the ninth largest of Barnet’s wards with an area of 3.4 square kilometres.

Population

With 16,088 residents in 2012, West Hendon ranks as the 15th largest ward in Barnet. It is expected to increase substantially by 13.6% in the next decade, to 18,270 residents and is expected to be 5th largest in Barnet.

(Source: Barnet Hybrid Solution updated for MYE Jan 2012 update)

Population Density: 50.8 per hectare Ward Rank in Barnet: 12th most dense

No. of Households: 6224

(Source: Census 2011¹)

Age Profile

West Hendon ward’s age structure mirrors that of the borough as a whole in all age groups.

(Source: Barnet Hybrid Solution updated for MYE Jan 2012 update)

Figure 1. Age Profile

2012	0-14	15-39	40-59	60-79	80+
West Hendon	22%	39%	24%	12%	3%
BARNET	21%	35%	26%	14%	4%

¹ Census output is Crown copyright and is reproduced with the permission of the Controller of HMSO and the Queen's Printer for Scotland.

Ethnicity

41% of West Hendon residents describe their ethnic origin as White British; the second lowest proportion in Barnet and lower than the Barnet average of 60%. The ward otherwise reflects Barnet as a whole, except the residents who describe their ethnic origin as Indian which is higher than the Barnet average, 19% against the borough average of 9%.

(Source: Barnet Census Profile 2001)

Religion

In terms of faith West Hendon has the highest proportion of Hindus among its residents, 11% as against the borough average of 6%. Also the third highest proportion of Muslims in Barnet wards, 17% against an average of 10%.

(Source: Census 2011)

Figure 2. Religion Profile

Ward/Area	Christian	Buddhist	Hindu	Jewish	Muslim	Sikh	Other Religion	No Religion	Religion not stated
BARNET	41%	1%	6%	15%	10%	0%	1%	16%	8%
West Hendon	36%	2%	11%	14%	17%	0%	1%	11%	7%

Languages

39% of school children in West Hendon do not speak English as a first language in the home. This is a little lower than the Barnet average (44%). Urdu, Gujarati and Arabic are the most common languages other than English spoken in the homes of West Hendon pupils attending Barnet schools (with 134, 113 and 83 pupils respectively).

(Source: PLASC January 2012: this data does not include pupils from West Hendon who attend private schools or schools outside Barnet.)

Deprivation

The 2010 Index of Deprivation shows Barnet as a whole to be the 176th most deprived local authority out of the 354 for England and Wales – slightly below the average. Barnet has become less deprived in relation to England over the last three years. One of the LSOA's² in West Hendon is within the 10% most income deprived nationally.

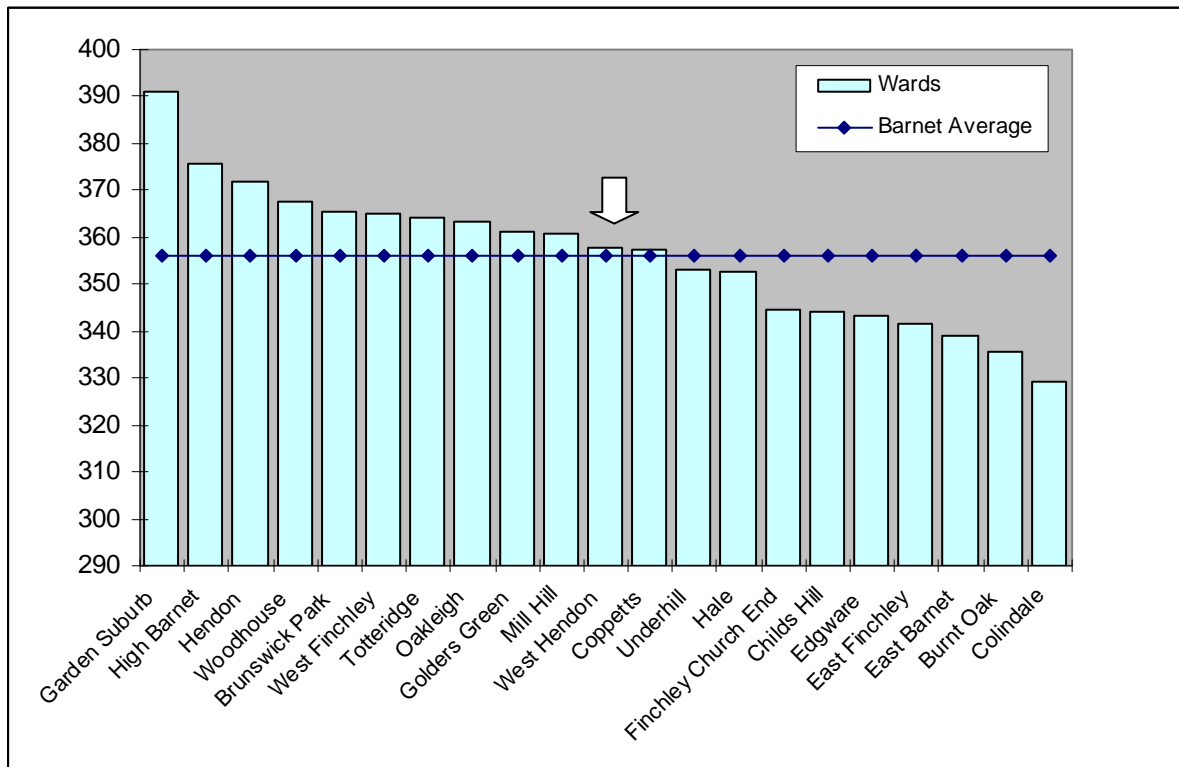
(Source: [http://www.barnet.gov.uk/download/downloads/id/2348/deprivation in barnet 2012](http://www.barnet.gov.uk/download/downloads/id/2348/deprivation%20in%20barnet%202012))

Education

The data for 2011/12 in the graph below shows the results for the 2,655 Barnet residents attending Barnet schools who took GCSEs. It shows pupils living in West Hendon had the eleventh highest GCSE equivalent point scores per pupil in the borough, slightly above the Barnet average. (Source: Performance & Data Management, Children's Service, LBB)

² Lower Super Output Areas (LSOAs) are standard statistical geographies developed by the Office for National Statistics, which contain around 1,500 people.

Figure 3. Average GCSE scores for 2011/12, by pupil's ward of residence



Income

Data from the company CACI shows West Hendon to have a median average household income of £30,181 – below the borough average which was £33,701, and the fourth lowest in the borough. (Source: CACI Paycheck data 2012)

In May 2012 there were 2,115 West Hendon residents receiving a state pension, which is lower than the borough average of 2,434 per ward. (Source: DWP Information Directorate)

Working Age Benefits

The Jobseeker's allowance (JSA) is payable to people under pensionable age who are available for, and actively seeking, work. The overall rate of claiming for West Hendon residents is higher than the borough level but lower than national levels. (Source: www.nomisweb.co.uk)

Figure 4. Total Jobseekers Allowance claimants (February 2013)

	West Hendon (numbers)	West Hendon (%)	Barnet (%)	Great Britain (%)
All people	342	3.3	2.8	3.9
Males	209	4.2	3.5	5.1
Females	133	2.5	2.2	2.7

Figure 5. DWP benefit claimants (August 2012)

	West Hendon (numbers)	West Hendon (%)	Barnet (%)	Great Britain (%)
Total claimants	1,320	12.9	10.9	14.3
Job seekers	355	3.5	2.8	3.7
ESA and incapacity benefits	605	5.9	4.7	6.3
Lone parents	120	1.2	1.3	1.4
Carers	110	1.1	0.9	1.2
Others on income related benefits	20	0.2	0.3	0.4
Disabled	95	0.9	0.8	1.1
Bereaved	15	0.1	0.2	0.2
Key out-of-work benefits [†]	1,100	10.7	9.1	11.8

Health

Average life expectancy is a key summary indicator of health. For men, the West Hendon figure is lower than the average for Barnet, and slightly higher than the London & England average. For women it is higher than the average for Barnet, London & England.

(Source: ONS Life expectancy by ward 1999-2007)

Figure 6. Life Expectancy in Years

	Males	Females
West Hendon	77.7	83.1
Barnet	78.6	82.7
London	77.1	81.7
England	77.3	81.5

Crime

For all categories except 'Burglary' and 'Fraud or forgery', crime rates in the year to February 2013 in Barnet are low compared with London as a whole. In the case of West Hendon, it is either equal to, or in more cases, above the Barnet average in all categories.

(Source: Metropolitan Police Service).

Note: a crime is categorised as a robbery where force is intimidated or used to steal property. Burglary is theft, or attempted theft, from a building where access is not authorised.

Mosaic

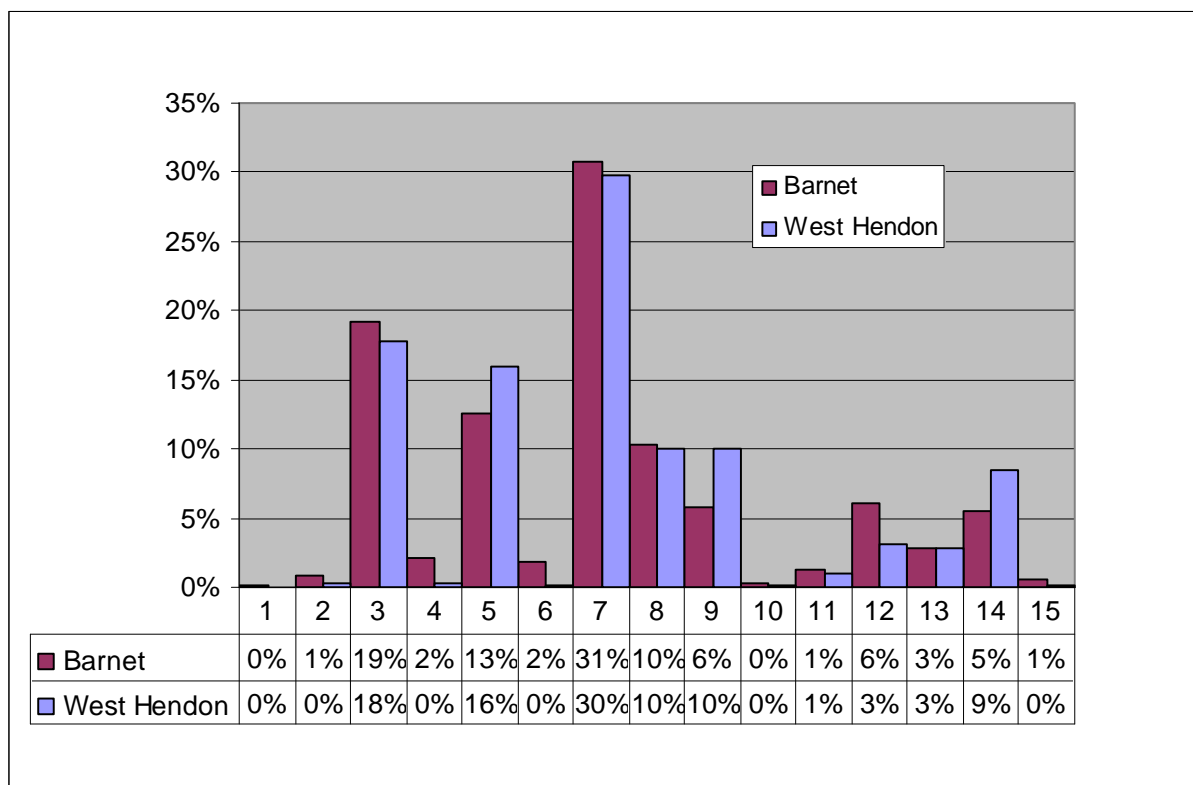
The council has bought the data used in this section from a commercial organisation, Experian. If the findings are used in other documents then this source must be acknowledged and copyright quoted in the following way: Mosaic data 2010 © Copyright 2004 Experian Ltd

- Experian’s Mosaic data brings together a large amount of data about areas and individual households from a variety of sources to classify all households according to 15 Groups and 67 Types. Experian does not claim one hundred percent accuracy for this product but it does use strong correlations to arrive at good predictions about the nature of each household in the borough. The classifications are highly detailed but summed up with a headline phrase.

Mosaic Groups

- West Hendon’s Mosaic profile roughly mirrors that of Barnet as a whole.
- West Hendon has slightly more than the borough average of Group 9 which are Lower income workers in urban terraces in often diverse areas and slightly more of Group 14: Young people renting flats in high density social housing.

Figure 7. Mosaic Groups in West Hendon



Group Code	Group Description
1	Residents of isolated rural communities
2	Residents of small and mid-sized towns with strong local roots
3	Wealthy people living in the most sought after neighbourhoods
4	Successful professionals living in suburban or semi-rural homes
5	Middle income families living in moderate suburban semis
6	Couples with young children in comfortable modern housing
7	Young, well-educated city dwellers
8	Couples and young singles in small modern starter homes

Group Code	Group Description
9	Lower income workers in urban terraces in often diverse areas
10	Owner occupiers in older-style housing in ex-industrial areas
11	Residents with sufficient incomes in right-to-buy social housing
12	Active elderly people living in pleasant retirement locations
13	Elderly people reliant on state support
14	Young people renting flats in high density social housing
15	Families in low-rise social housing with high levels of benefit need